

**Grundwasserstände**

**Nr. 5013 Trubikon - Oberwil Zug**

**KANTON ZUG**

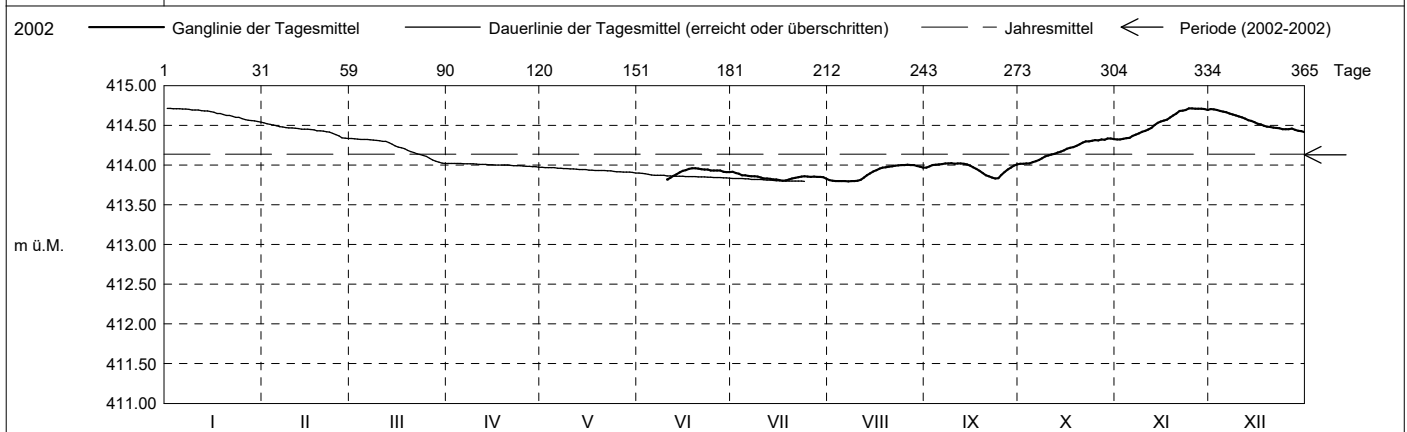
Koordinaten: 2'681'087' / 1'221'704'

Amt für Umwelt

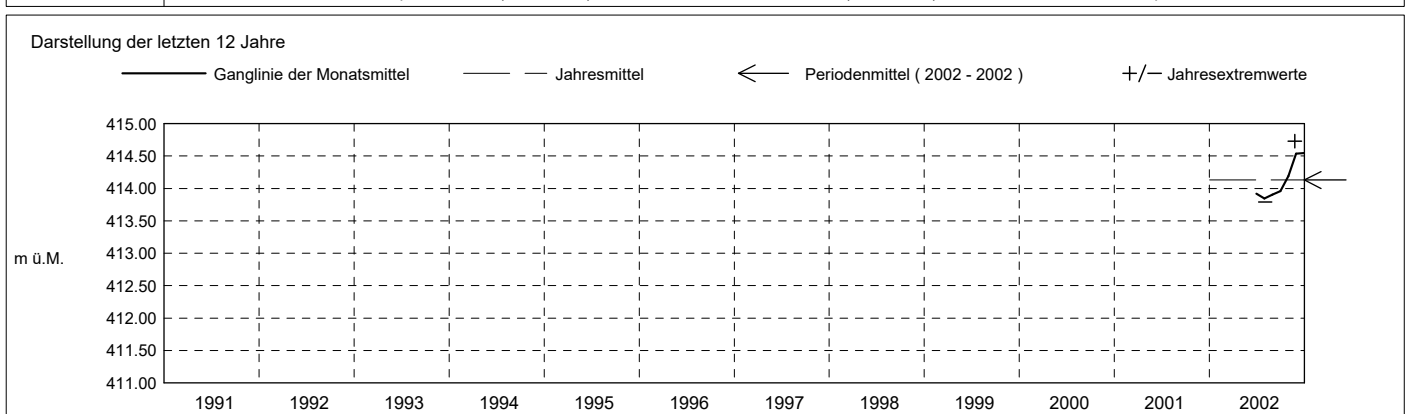
Abstichpunkt: 431.24 m ü.M. OK Terrain: 430.46 m ü.M.

2002	Januar	Februar	März	April	Mai	Juni	Juli	August	September	Oktober	November	Dezember	
Tagesmittel							413.91 +	413.81	413.97	414.01 -	414.32 -	414.70 +	1
							413.90	413.80	413.98	414.02	414.32 -	414.70 +	2
							413.89	413.80	414.00	414.02	414.33	414.69	3
							413.87	413.80	414.00	414.02	414.34	414.68	4
							413.87	413.80	414.01	414.04	414.34	414.67	5
							413.86	413.80	414.01	414.05	414.37	414.66	6
							413.86	413.79 -	414.02 +	414.07	414.38	414.65	7
							413.86	413.80	414.02 +	414.08	414.40	414.64	8
							413.86	413.80	414.02 +	414.11	414.42	414.63	9
						413.82 -	413.84	413.80	414.02 +	414.12	414.43	414.61	10
						413.84	413.83	413.82	414.02 +	414.13	414.45	414.60	11
						413.86	413.83	413.84	414.02 +	414.14	414.47	414.58	12
						413.88	413.83	413.87	414.02 +	414.16	414.50	414.56	13
						413.91	413.82	413.90	414.01	414.17	414.53	414.55	14
m ü.M.						413.92	413.82	413.92	413.99	414.18	414.55	414.54	15
						413.93	413.81	413.94	413.97	414.20	414.56	414.52	16
						413.95	413.80 -	413.96	413.95	414.22	414.57	414.51	17
						413.96 +	413.81	413.97	413.92	414.23	414.60	414.49	18
						413.96 +	413.82	413.97	413.90	414.24	414.62	414.48	19
						413.95	413.83	413.98	413.87	414.26	414.65	414.48	20
						413.95	413.84	413.98	413.86	414.28	414.68	414.47	21
						413.94	413.85	413.99	413.84	414.30	414.68	414.47	22
						413.94	413.86	413.99	413.83 -	414.30	414.69	414.46	23
						413.93	413.86	414.00 +	413.83 -	414.31	414.71 +	414.45	24
+ Maximum						413.93	413.85	414.00 +	413.87	414.32	414.71 +	414.45	25
						413.93	413.85	414.00 +	413.91	414.31	414.71 +	414.45	26
						413.93	413.85	414.00 +	413.94	414.32	414.71 +	414.46	27
- Minimum						413.92	413.85	414.00 +	413.97	414.32	414.71 +	414.44	28
						413.91	413.85	413.99	413.99	414.33 +	414.71 +	414.43	29
						413.91	413.85	413.98	414.01	414.33 +	414.69	414.43	30
							413.83	413.97		414.33 +		414.41 -	31
Monatsmittel						413.92	413.85 -	413.90	413.96	414.19	414.54 +	414.54 +	m ü.M.
Spitze Datum						413.96 17.	413.92 1.	414.01 25.	414.03 8.	414.34 29.	414.73 + 24.	414.71 1.	m ü.M.
Amplitude						0.14	0.12 -	0.22	0.21	0.33	0.41 +	0.31	m

Jahr Mittel: 414.14 Spitze: 414.73 (24.11.2002) Minimum: 413.79 (03.08.2002) Amplitude: 0.94



Periode	2002 - 2002 (0 Jahre)												
Monatsmittel	0.00 -	0.00 -	0.00 -	0.00 -	0.00 -	413.92	413.85	413.90	413.96	414.19	414.54 +	414.54 +	m ü.M.
Monats-Spitze Jahr						413.96 2002	413.92 - 2002	414.01 2002	414.03 2002	414.34 2002	414.73 + 2002	414.71 2002	m ü.M.
Monats-Minimum Jahr						413.82 2002	413.80 2002	413.79 - 2002	413.82 2002	414.01 2002	414.32 2002	414.40 + 2003	m ü.M.
Monats-Amplitude Jahr						0.14 2002	0.12 - 2002	0.22 2002	0.21 2002	0.33 2002	0.41 + 2002	0.31 2002	m ü.M.
Periode	Mittel: 414.13 Spitze: 414.73 (24.11.2002) Minimum: 413.79 (03.08.2002) Amplitude: 0.94												



**Grundwasserstände**

**Nr. 5013 Trubikon - Oberwil Zug**

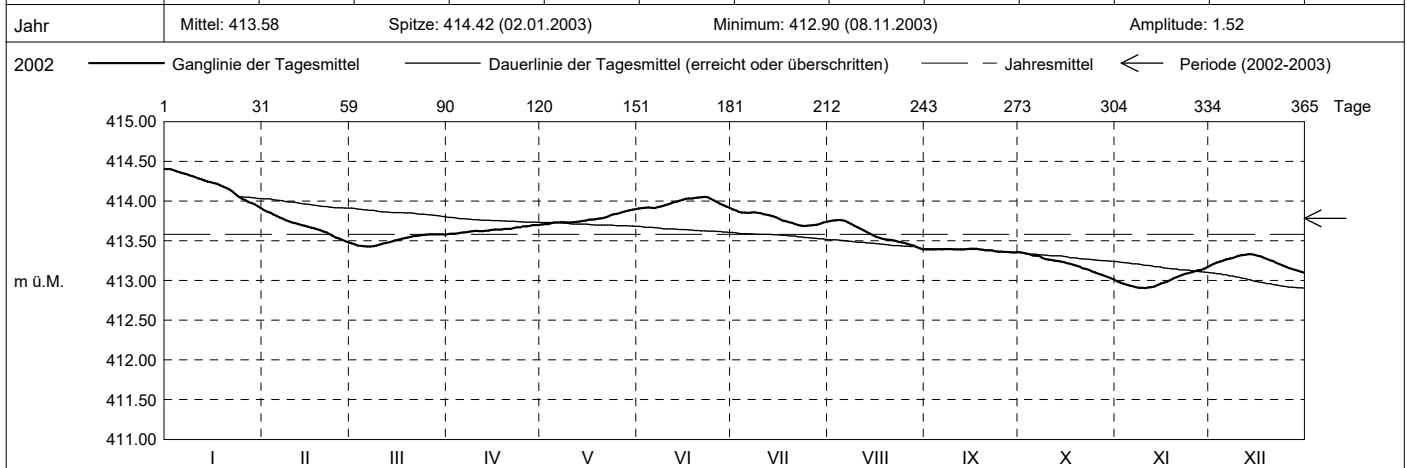
**KANTON ZUG**

Koordinaten: 2'681'087' / 1'221'704'

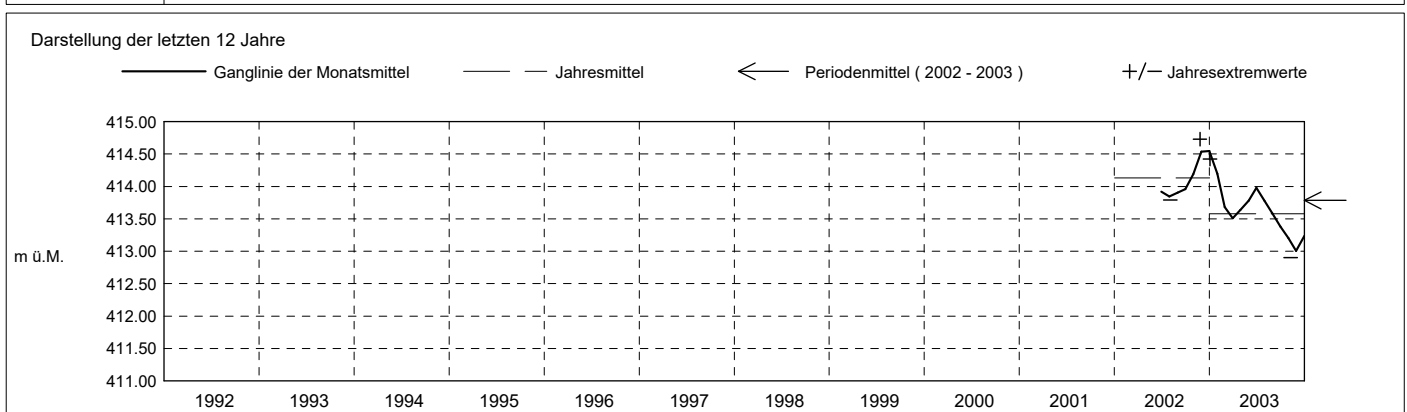
Amt für Umwelt

Abstichpunkt: 431.24 m ü.M. OK Terrain: 430.46 m ü.M.

2003	Januar	Februar	März	April	Mai	Juni	Juli	August	September	Oktober	November	Dezember																																				
Tagesmittel	1	414.40 +	413.89 +	413.47	413.59 -	413.71 -	413.91 -	413.90 +	413.75	413.39	413.35 +	412.99	413.19	1																																		
	2	414.40 +	413.87	413.45	413.59 -	413.71 -	413.91 -	413.88	413.75	413.39	413.35 +	412.98	413.21	2																																		
	3	414.39	413.85	413.44	413.59 -	413.71 -	413.91 -	413.86	413.76 +	413.39	413.34	412.96	413.23	3																																		
	4	414.38	413.83	413.43 -	413.59 -	413.72	413.92	413.85	413.76 +	413.39	413.33	412.95	413.24	4																																		
	5	414.36	413.82	413.43 -	413.60	413.73	413.92	413.85	413.76 +	413.39	413.32	412.94	413.25	5																																		
	6	414.35	413.79	413.43 -	413.61	413.73	413.91 -	413.85	413.75	413.39	413.31	412.93	413.27	6																																		
	7	414.34	413.78	413.43 -	413.61	413.73	413.92	413.85	413.73	413.39	413.31	412.92	413.28	7																																		
	8	414.33	413.76	413.43 -	413.62	413.73	413.93	413.86	413.71	413.40 +	413.28	412.91	413.28	8																																		
	9	414.32	413.75	413.44	413.62	413.73	413.94	413.85	413.69	413.40 +	413.27	412.91	413.30	9																																		
	10	414.30	413.73	413.45	413.63	413.73	413.96	413.85	413.67	413.39	413.26	412.90	413.31	10																																		
m ü.M.	11	414.29	413.72	413.46	413.62	413.73	413.97	413.84	413.65	413.39	413.26	412.91	413.32	11																																		
	12	414.27	413.71	413.47	413.62	413.74	413.98	413.83	413.63	413.39	413.25	412.92	413.32	12																																		
	13	414.26	413.70	413.48	413.63	413.74	413.99	413.82	413.61	413.39	413.25	412.92	413.33 +	13																																		
	14	414.24	413.69	413.49	413.63	413.75	414.00	413.81	413.59	413.40 +	413.24	412.94	413.33 +	14																																		
	15	414.24	413.68	413.50	413.64	413.75	414.02	413.79	413.57	413.40 +	413.23	412.96	413.32	15																																		
	16	414.22	413.66	413.51	413.64	413.77	414.03	413.77	413.55	413.40 +	413.22	412.97	413.31	16																																		
	17	414.22	413.66	413.52	413.64	413.77	414.03	413.75	413.54	413.40 +	413.21	412.98	413.30	17																																		
	18	414.20	413.64	413.53	413.64	413.77	414.03	413.75	413.52	413.39	413.20	413.01	413.29	18																																		
	19	414.18	413.63	413.54	413.65	413.78	414.04	413.73	413.52	413.39	413.19	413.02	413.27	19																																		
	20	414.17	413.62	413.55	413.65	413.78	414.04	413.72	413.51	413.38	413.17	413.04	413.26	20																																		
+ Maximum	21	414.15	413.60	413.56	413.65	413.79	414.05 +	413.71	413.51	413.38	413.15	413.06	413.24	21																																		
	22	414.12	413.58	413.56	413.66	413.80	414.05 +	413.70	413.50	413.38	413.14	413.07	413.22	22																																		
	23	414.08	413.56	413.57	413.67	413.82	414.05 +	413.69	413.49	413.37	413.13	413.08	413.21	23																																		
	24	414.05	413.54	413.57	413.67	413.83	414.03	413.68 -	413.48	413.36	413.11	413.09	413.19	24																																		
	25	414.03	413.53	413.58 +	413.68	413.84	414.01	413.69	413.47	413.36	413.10	413.10	413.17	25																																		
	26	414.01	413.51	413.58 +	413.68	413.85	413.99	413.69	413.46	413.36	413.09	413.12	413.16	26																																		
	27	413.99	413.50	413.58 +	413.69	413.86	413.96	413.70	413.45	413.36	413.07	413.13	413.15	27																																		
	28	413.98	413.48 -	413.58 +	413.70 +	413.87	413.95	413.70	413.44	413.36	413.06	413.13	413.13	28																																		
	29	413.96		413.58 +	413.70 +	413.88	413.93	413.71	413.42	413.35 -	413.04	413.15	413.12	29																																		
	30	413.94		413.58 +	413.70 +	413.89	413.92	413.73	413.40	413.36	413.03	413.17 +	413.11	30																																		
31	413.91 -		413.58 +		413.90 +		413.74	413.39 -		413.01 -		413.10 -	31																																			
Monatsmittel	414.20 +	413.68	413.51 -	413.64	413.78	413.98	413.78	413.58	413.38	413.20	413.01 -	413.24	m ü.M.																																			
Spitze Datum	414.42 + 2.	413.90 1.	413.59 27.	413.71 30.	413.90 31.	414.06 22.	413.90 1.	413.77 4.	413.40 1.	413.36 1.	413.18 - 30.	413.34 13.	m ü.M.																																			
Amplitude	0.52 +	0.43	0.17	0.13	0.20	0.16	0.22	0.38	0.05 -	0.36	0.28	0.25	m																																			
Jahr	Mittel: 413.58												Spitze: 414.42 (02.01.2003)												Minimum: 412.90 (08.11.2003)												Amplitude: 1.52											



Periode	2002 - 2003 ( 1 Jahre )																																															
Monatsmittel	414.20 +	413.68	413.51 -	413.64	413.78	413.95	413.81	413.74	413.67	413.70	413.77	413.89	m ü.M.																																			
Monats-Spitze Jahr	414.42 2003	413.90 2003	413.59 - 2003	413.71 2003	413.90 2003	414.06 2003	413.92 2002	414.01 2002	414.03 2002	414.34 2002	414.73 + 2002	414.71 2002	m ü.M.																																			
Monats-Minimum Jahr	413.90 + 2003	413.47 2003	413.42 2003	413.58 2003	413.70 2003	413.82 2002	413.68 2003	413.39 2003	413.35 2003	413.00 2003	412.90 - 2003	413.09 2003	m ü.M.																																			
Monats-Amplitude Jahr	0.52 + 2003	0.43 2003	0.17 2003	0.13 - 2003	0.20 2003	0.16 2003	0.22 2003	0.38 2003	0.21 2002	0.36 2003	0.41 2002	0.31 2002	m ü.M.																																			
Periode	Mittel: 413.78												Spitze: 414.73 (24.11.2002)												Minimum: 412.90 (08.11.2003)												Amplitude: 1.83											



**Grundwasserstände**

**Nr. 5013 Trubikon - Oberwil Zug**

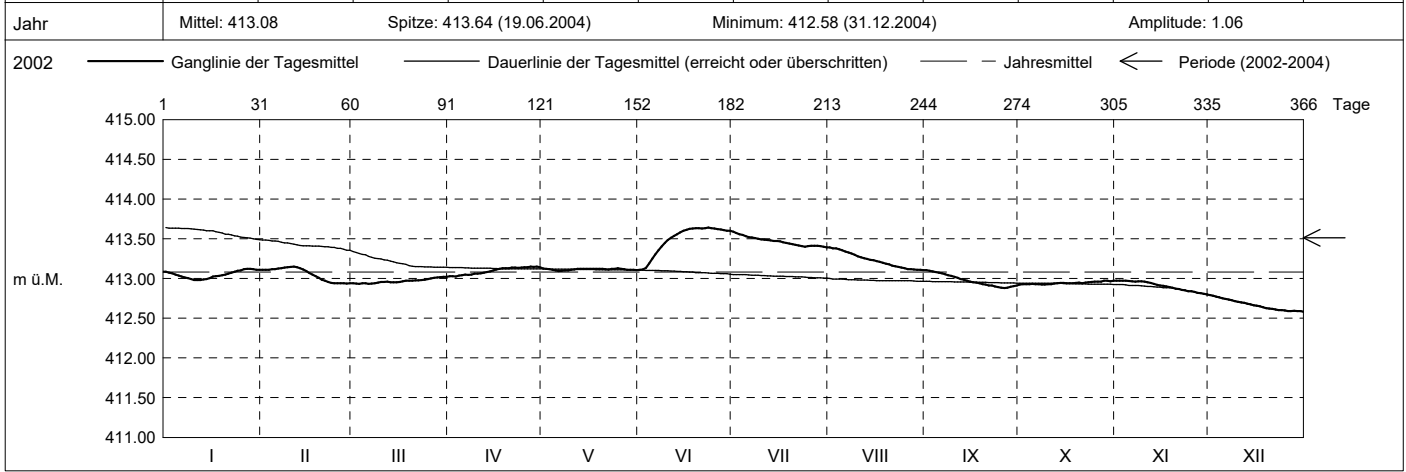
**KANTON ZUG**

Koordinaten: 2'681'087' / 1'221'704'

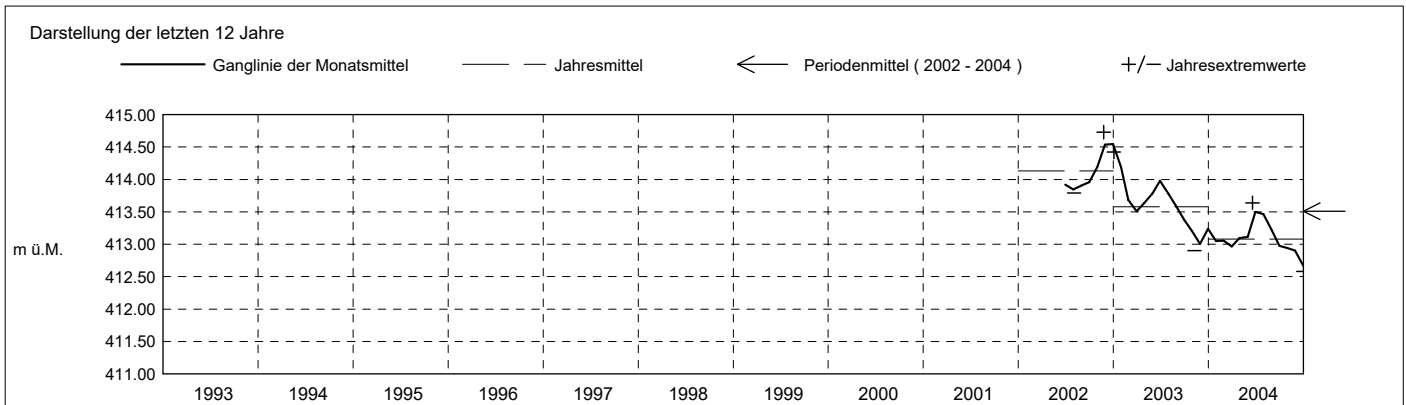
Amt für Umwelt

Abstichpunkt: 431.24 m ü.M. OK Terrain: 430.46 m ü.M.

2004	Januar	Februar	März	April	Mai	Juni	Juli	August	September	Oktober	November	Dezember																																				
Tagesmittel	1 413.09	413.11	412.94	413.03 -	413.13 +	413.11 -	413.59 +	413.39 +	413.10 +	412.92 -	412.97 +	412.79 +	1																																			
	2 413.07	413.11	412.94	413.03 -	413.12	413.11 -	413.57	413.38	413.10 +	412.93	412.97 +	412.78	2																																			
	3 413.06	413.11	412.93 -	413.03 -	413.12	413.14	413.56	413.38	413.09	412.93	412.97 +	412.77	3																																			
	4 413.05	413.12	412.94	413.04	413.11	413.19	413.55	413.37	413.08	412.93	412.97 +	412.76	4																																			
	5 413.04	413.12	412.94	413.04	413.10	413.25	413.53	413.36	413.07	412.93	412.97 +	412.75	5																																			
	6 413.02	413.13	412.93 -	413.05	413.09 -	413.30	413.52	413.34	413.07	412.93	412.96	412.74	6																																			
	7 413.01	413.13	412.94	413.04	413.10	413.36	413.52	413.33	413.05	412.93	412.96	412.74	7																																			
	8 413.01	413.14	412.94	413.05	413.10	413.40	413.51	413.31	413.04	412.92 -	412.96	412.73	8																																			
	9 412.99	413.14	412.95	413.06	413.10	413.45	413.50	413.30	413.03	412.92 -	412.96	412.71	9																																			
	10 412.98 -	413.15 +	412.96	413.06	413.11	413.48	413.49	413.28	413.02	412.93	412.96	412.71	10																																			
	11 412.98 -	413.15 +	412.96	413.06	413.11	413.51	413.49	413.27	413.01	412.93	412.95	412.70	11																																			
	12 412.98 -	413.14	412.96	413.07	413.12	413.54	413.48	413.26	412.99	412.94	412.94	412.69	12																																			
	13 412.99	413.13	412.95	413.08	413.12	413.56	413.48	413.25	412.98	412.94	412.93	412.68	13																																			
	14 412.99	413.11	412.95	413.09	413.12	413.58	413.47	413.23	412.97	412.94	412.92	412.67	14																																			
m ü.M.	15 413.01	413.09	412.95	413.10	413.12	413.60	413.47	413.23	412.96	412.94	412.91	412.66	15																																			
	16 413.02	413.07	412.96	413.11	413.12	413.61	413.47	413.22	412.95	412.94	412.91	412.66	16																																			
	17 413.03	413.05	412.96	413.12	413.12	413.63	413.46	413.21	412.95	412.94	412.90	412.65	17																																			
	18 413.03	413.03	412.97	413.13	413.12	413.63	413.45	413.20	412.94	412.94	412.89	412.64	18																																			
	19 413.04	413.01	412.97	413.13	413.12	413.63	413.44	413.19	412.93	412.94	412.88	412.63	19																																			
	20 413.05	412.98	412.97	413.13	413.12	413.63	413.43	413.18	412.92	412.95	412.87	412.62	20																																			
	21 413.06	412.97	412.98	413.14	413.12	413.63	413.42	413.16	412.91	412.94	412.87	412.62	21																																			
	22 413.07	412.96	412.98	413.14	413.11	413.64 +	413.42	413.15	412.91	412.95	412.86	412.61	22																																			
	23 413.08	412.94 -	412.98	413.13	413.12	413.64 +	413.41	413.15	412.90	412.95	412.85	412.60	23																																			
	24 413.10	412.94 -	412.98	413.14	413.12	413.63	413.40	413.14	412.89	412.96	412.84	412.60	24																																			
+ Maximum	25 413.10	412.94 -	412.99	413.14	413.13 +	413.63	413.41	413.13	412.88 -	412.96	412.84	412.60	25																																			
	26 413.12 +	412.94 -	413.00	413.14	413.12	413.62	413.41	413.12	412.88 -	412.96	412.83	412.59	26																																			
	27 413.12 +	412.94 -	413.01	413.15 +	413.12	413.62	413.41	413.12	412.88 -	412.96	412.82	412.59	27																																			
- Minimum	28 413.12 +	412.94 -	413.01	413.15 +	413.11	413.61	413.41	413.11 -	412.90	412.97 +	412.82	412.59	28																																			
	29 413.12 +	412.94 -	413.02 +	413.15 +	413.11	413.60	413.41	413.11 -	412.90	412.97 +	412.81	412.59	29																																			
	30 413.11		413.02 +	413.14	413.11	413.60	413.40	413.11 -	412.91	412.96	412.80	412.59	30																																			
	31 413.11		413.02 +	413.10	413.10	413.60	413.39 -	413.11 -	412.91	412.97 +	412.80	412.58 -	31																																			
Monatsmittel	413.05	413.05	412.97	413.10	413.11	413.50 +	413.47	413.23	412.97	412.94	412.90	412.67 -	m ü.M.																																			
Spitze Datum	413.13 29.	413.16 11.	413.03 31.	413.15 26.	413.13 1.	413.64 + 19.	413.60 1.	413.39 1.	413.11 1.	412.97 26.	412.98 2.	412.79 - 1.	m ü.M.																																			
Amplitude	0.16	0.23	0.10	0.13	0.04 -	0.53 +	0.21	0.29	0.23	0.06	0.18	0.21	m																																			
Jahr	Mittel: 413.08												Spitze: 413.64 (19.06.2004)												Minimum: 412.58 (31.12.2004)												Amplitude: 1.06											



Periode	2002 - 2004 ( 2 Jahre )																																															
Monatsmittel	413.62	413.37	413.24 -	413.37	413.45	413.80 +	413.70	413.57	413.44	413.45	413.48	413.48	m ü.M.																																			
Monats-Spitze Jahr	414.42 2003	413.90 2003	413.59 - 2003	413.71 2003	413.90 2003	414.06 2003	413.92 2002	414.01 2002	414.03 2002	414.34 2002	414.73 + 2002	414.71 2002	m ü.M.																																			
Monats-Minimum Jahr	412.97 2004	412.93 2004	412.93 2004	413.02 2004	413.09 2004	413.11 2004	413.39 + 2004	413.10 2004	412.88 2004	412.91 2004	412.80 2004	412.58 - 2004	m ü.M.																																			
Monats-Amplitude Jahr	0.52 2003	0.43 2003	0.17 2003	0.13 - 2003	0.20 2003	0.53 + 2004	0.22 2003	0.38 2003	0.23 2004	0.36 2003	0.41 2002	0.31 2002	m ü.M.																																			
Periode	Mittel: 413.51												Spitze: 414.73 (24.11.2002)												Minimum: 412.58 (31.12.2004)												Amplitude: 2.15											



**Grundwasserstände**

**Nr. 5013 Trubikon - Oberwil Zug**

**KANTON ZUG**

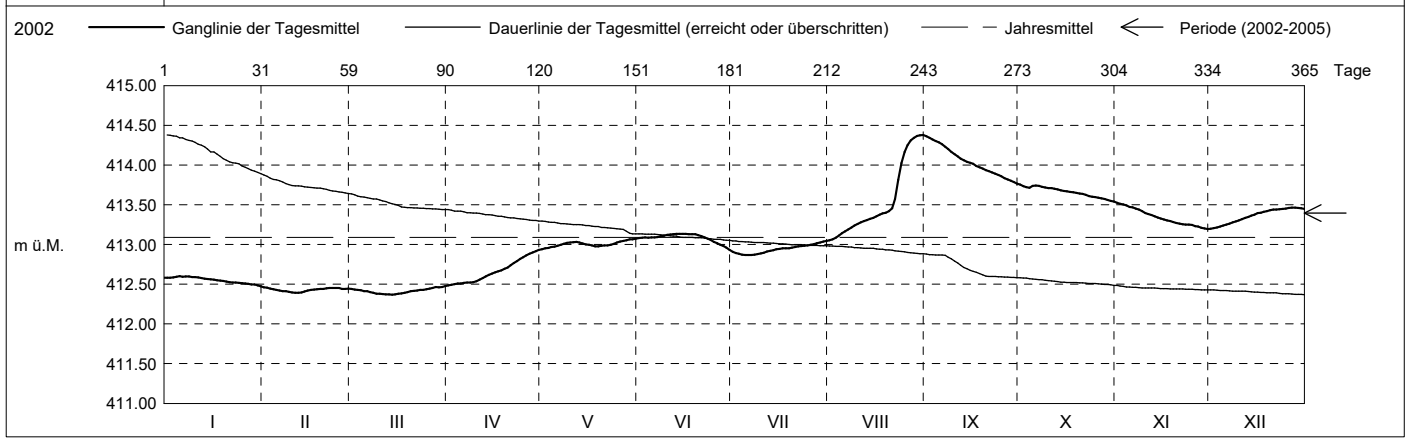
Koordinaten: 2'681'087' / 1'221'704'

Amt für Umwelt

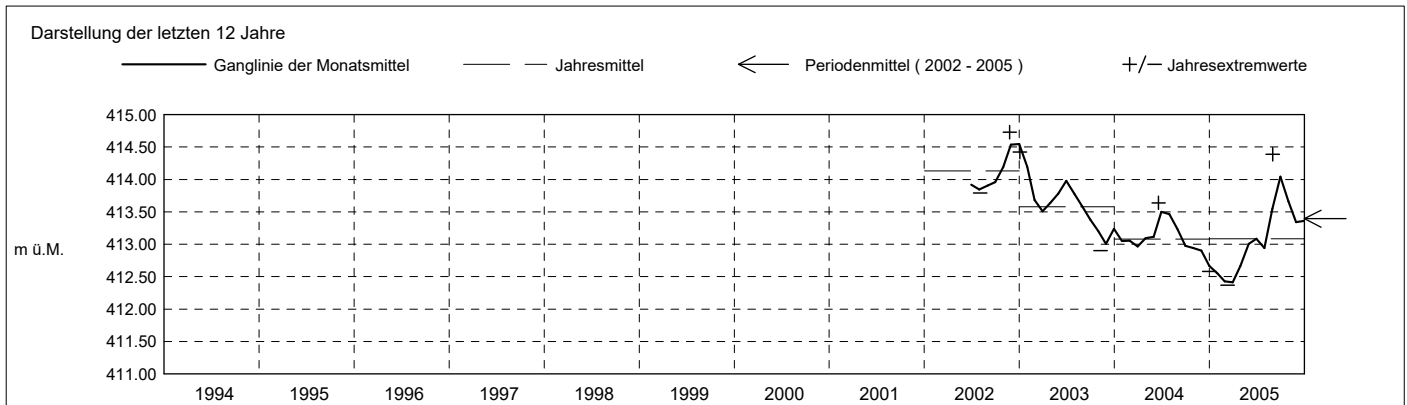
Abstichpunkt: 431.24 m ü.M. OK Terrain: 430.46 m ü.M.

2005	Januar	Februar	März	April	Mai	Juni	Juli	August	September	Oktober	November	Dezember	
Tagesmittel	1 412.58	412.46 +	412.44	412.49 -	412.94 -	413.08	412.91	413.05 -	414.36 +	413.75 +	413.52 +	413.20 -	1
	2 412.58	412.46 +	412.43	412.49 -	412.95	413.09	412.89	413.07	414.34	413.73	413.51	413.21	2
	3 412.59	412.45	412.43	412.50	412.96	413.09	412.88	413.08	414.32	413.72	413.50	413.21	3
	4 412.60 +	412.44	412.42	412.51	412.97	413.09	412.87 -	413.11	414.30	413.71	413.49	413.23	4
	5 412.60 +	412.43	412.41	412.51	412.97	413.09	412.87 -	413.14	414.29	413.74	413.47	413.24	5
	6 412.59	412.42	412.41	412.52	412.98	413.09	412.87 -	413.17	414.26	413.74	413.47	413.25	6
	7 412.60 +	412.41	412.40	412.52	413.00	413.09	412.87 -	413.19	414.23	413.74	413.45	413.26	7
	8 412.60 +	412.41	412.39	412.52	413.01	413.10	412.87 -	413.21	414.20	413.73	413.44	413.28	8
	9 412.59	412.40	412.38	412.52	413.02	413.11	412.88	413.24	414.17	413.72	413.42	413.29	9
	10 412.59	412.40	412.38	412.54	413.02	413.12	412.89	413.26	414.14	413.71	413.40	413.30	10
	11 412.58	412.39 -	412.38	412.56	413.03	413.13	412.90	413.28	414.11	413.71	413.38	413.32	11
	12 412.58	412.39 -	412.37 -	412.58	413.03	413.13	412.91	413.30	414.08	413.70	413.37	413.34	12
	13 412.57	412.40	412.37 -	412.60	413.02	413.13	412.92	413.31	414.06	413.69	413.35	413.35	13
m ü.M.	14 412.57	412.41	412.37 -	412.62	413.01	413.14 +	412.93	413.32	414.04	413.68	413.34	413.36	14
	15 412.56	412.42	412.37 -	412.63	413.00	413.13	412.94	413.33	414.03	413.67	413.33	413.38	15
	16 412.56	412.43	412.38	412.65	412.99	413.13	412.94	413.35	414.01	413.67	413.32	413.39	16
	17 412.55	412.43	412.38	412.66	412.99	413.13	412.95	413.37	413.99	413.66	413.30	413.40	17
	18 412.55	412.44	412.39	412.68	412.98	413.13	412.95	413.39	413.97	413.66	413.29	413.41	18
	19 412.54	412.44	412.40	412.69	412.98	413.13	412.95	413.40	413.95	413.65	413.28	413.42	19
	20 412.53	412.44	412.41	412.71	412.98	413.12	412.96	413.42	413.94	413.64	413.27	413.43	20
	21 412.52	412.45	412.42	412.74	412.99	413.11	412.97	413.46	413.92	413.64	413.26	413.44	21
	22 412.52	412.45	412.42	412.77	412.99	413.09	412.98	413.57	413.91	413.62	413.25	413.44	22
	23 412.52	412.45	412.43	412.79	413.00	413.07	412.98	413.81	413.89	413.61	413.25	413.44	23
	24 412.52	412.45	412.43	412.82	413.01	413.06	412.98	414.02	413.88	413.60	413.25	413.45	24
+ Maximum	25 412.51	412.45	412.44	412.84	413.02	413.03	412.99	414.16	413.86	413.60	413.24	413.45	25
	26 412.51	412.44	412.45	412.86	413.04	413.02	413.00	414.25	413.83	413.59	413.23	413.46 +	26
- Minimum	27 412.51	412.44	412.45	412.88	413.05	413.00	413.01	414.31	413.82	413.58	413.20	413.46 +	27
	28 412.50	412.44	412.46	412.90	413.05	412.98	413.02	414.34	413.80	413.57	413.21	413.46 +	28
	29 412.50	412.46	412.46	412.92	413.06	412.96	413.03	414.37	413.79	413.56	413.20	413.46 +	29
	30 412.48	412.47	412.47	412.93 +	413.07 +	412.93 -	413.04	414.38 +	413.77 -	413.55	413.19 -	413.45	30
	31 412.47 -	412.48 +	412.48 +	413.07 +	413.07 +	413.05 +	413.05 +	414.38 +	413.77 -	413.54 -	413.19 -	413.45	31
Monatsmittel	412.55	412.43	412.41 -	412.66	413.01	413.08	412.94	413.55	414.04 +	413.66	413.34	413.36	m ü.M.
Spitze Datum	4. 412.60	1. 412.47 -	31. 412.48	30. 412.94	31. 413.08	12. 413.14	31. 413.05	31. 414.39 +	1. 414.37	1. 413.76	1. 413.53	27. 413.47	m ü.M.
Amplitude	0.13	0.08 -	0.11	0.46	0.14	0.22	0.19	1.34 +	0.61	0.23	0.34	0.28	m

Jahr Mittel: 413.09 Spitze: 414.39 (31.08.2005) Minimum: 412.37 (11.03.2005) Amplitude: 2.02



Periode	2002 - 2005 (3 Jahre)												
Monatsmittel	413.27	413.05	412.96 -	413.13	413.30	413.62 +	413.51	413.57	413.59	413.50	413.45	413.45	m ü.M.
Monats-Spitze Jahr	414.42 2003	413.90 2003	413.59 - 2003	413.71 2003	413.90 2003	414.06 2003	413.92 2002	414.39 2005	414.37 2005	414.34 2002	414.73 + 2002	414.71 2002	m ü.M.
Monats-Minimum Jahr	412.47 2005	412.39 2005	412.37 - 2005	412.48 2005	412.94 2005	412.92 2005	412.86 2005	413.05 + 2005	412.88 2004	412.91 2004	412.80 2004	412.58 2004	m ü.M.
Monats-Amplitude Jahr	0.52 2003	0.43 2003	0.17 - 2003	0.46 2005	0.20 2003	0.53 2004	0.22 2003	1.34 + 2005	0.61 2005	0.36 2003	0.41 2002	0.31 2002	m ü.M.
Periode	Mittel: 413.39 Spitze: 414.73 (24.11.2002) Minimum: 412.37 (11.03.2005) Amplitude: 2.36												



**Grundwasserstände**

**Nr. 5013 Trubikon - Oberwil Zug**

**KANTON ZUG**

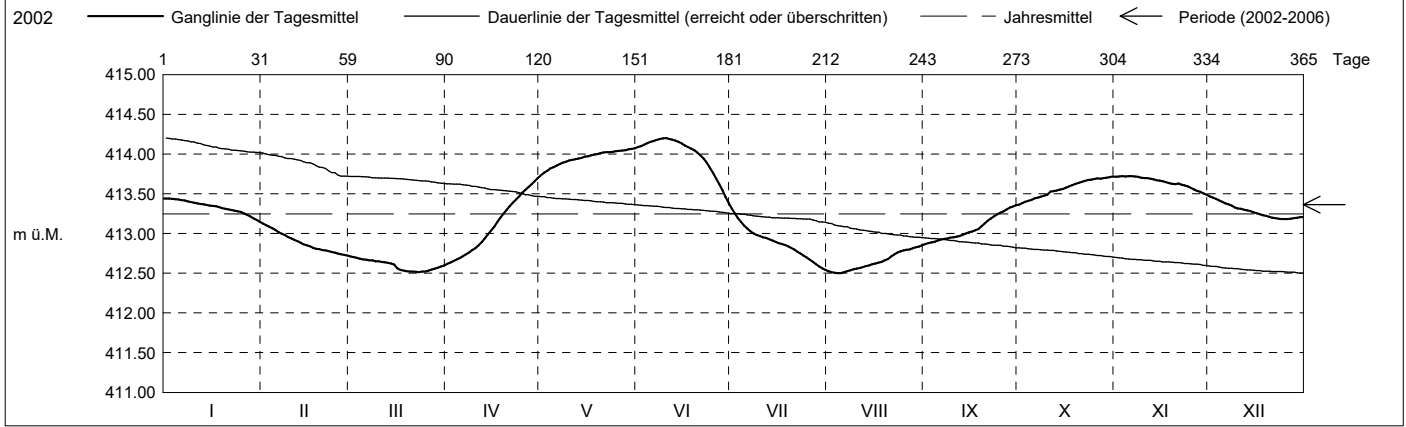
Koordinaten: 2'681'087' / 1'221'704'

Amt für Umwelt

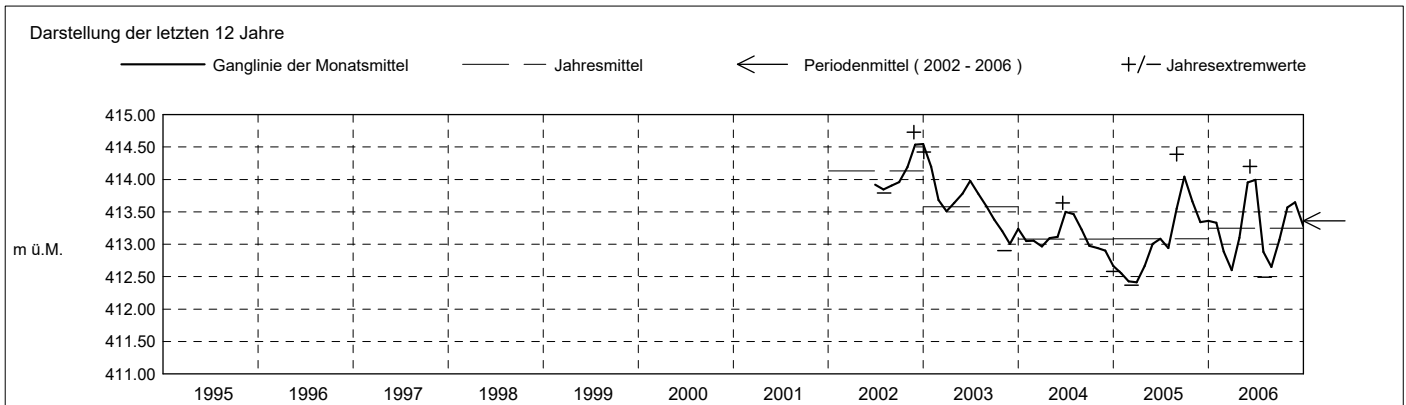
Abstichpunkt: 431.24 m ü.M. OK Terrain: 430.46 m ü.M.

2006	Januar	Februar	März	April	Mai	Juni	Juli	August	September	Oktober	November	Dezember	
Tagesmittel	1 413.44 +	413.13 +	412.71 +	412.62 -	413.73 -	414.09	413.31 +	412.53	412.87 -	413.36 -	413.71	413.47 +	1
	2 413.44 +	413.10	412.70	412.63	413.76	414.10	413.25	412.52	412.88	413.38	413.72 +	413.45	2
	3 413.43	413.08	412.69	412.65	413.79	414.12	413.19	412.51	412.89	413.40	413.72 +	413.44	3
	4 413.43	413.07	412.68	412.68	413.82	414.14	413.15	412.50 -	412.90	413.41	413.72 +	413.42	4
	5 413.43	413.04	412.67	412.69	413.83	414.15	413.10	412.50 -	412.91	413.42	413.72 +	413.40	5
	6 413.42	413.02	412.67	412.71	413.86	414.17	413.06	412.51	412.92	413.44	413.72 +	413.38	6
	7 413.41	413.00	412.66	412.74	413.88	414.18	413.03	412.53	412.93	413.45	413.72 +	413.36	7
	8 413.40	412.98	412.66	412.76	413.89	414.19	413.00	412.54	412.94	413.46	413.71	413.35	8
	9 413.40	412.96	412.65	412.79	413.90	414.20 +	412.98	412.55	412.95	413.48	413.70	413.33	9
	10 413.39	412.94	412.65	412.82	413.92	414.20 +	412.97	412.56	412.95	413.49	413.70	413.31	10
m ü.M.	11 413.38	412.92	412.64	412.85	413.93	414.19	412.95	412.57	412.96	413.53	413.70	413.31	11
	12 413.37	412.90	412.64	412.89	413.93	414.18	412.94	412.58	412.97	413.53	413.69	413.30	12
	13 413.36	412.88	412.63	412.93	413.94	414.17	412.93	412.59	412.98	413.54	413.68	413.29	13
	14 413.36	412.86	412.62	412.99	413.95	414.15	412.91	412.60	413.00	413.55	413.67	413.28	14
	15 413.35	412.85	412.61	413.04	413.96	414.13	412.90	412.61	413.02	413.56	413.67	413.27	15
	16 413.35	412.84	412.56	413.08	413.97	414.11	412.88	412.62	413.02	413.58	413.66	413.26	16
	17 413.34	412.82	412.54	413.14	413.98	414.09	412.87	412.64	413.04	413.59	413.64	413.24	17
	18 413.33	412.81	412.53	413.20	413.99	414.07	412.86	412.64	413.06	413.61	413.63	413.23	18
	19 413.32	412.80	412.53	413.25	414.00	414.05	412.84	412.66	413.09	413.63	413.62	413.22	19
	20 413.31	412.79	412.52 -	413.30	414.01	414.02	412.82	412.68	413.13	413.64	413.62	413.21	20
+ Maximum	21 413.30	412.79	412.52 -	413.34	414.02	413.98	412.80	412.71	413.16	413.65	413.63	413.20	21
	22 413.30	412.78	412.52 -	413.39	414.02	413.94	412.77	412.73	413.19	413.66	413.61	413.19	22
	23 413.29	412.77	412.52 -	413.43	414.02	413.89	412.74	412.76	413.22	413.67	413.60	413.19	23
	24 413.28	412.76	412.52 -	413.47	414.03	413.83	412.72	412.77	413.24	413.68	413.59	413.18 -	24
	25 413.27	412.75	412.52 -	413.51	414.03	413.77	412.70	412.79	413.26	413.69	413.57	413.18 -	25
	26 413.25	412.74	412.53	413.55	414.04	413.69	412.67	412.79	413.28	413.69	413.55	413.18 -	26
	27 413.23	412.73	412.54	413.58	414.04	413.62	412.64	412.80	413.30	413.69	413.54	413.19	27
	28 413.21	412.72 -	412.56	413.62	414.05	413.54	412.61	412.82	413.33	413.70	413.52	413.19	28
	29 413.19		412.57	413.66	414.06	413.46	412.59	412.83	413.34	413.70	413.50	413.20	29
	30 413.17		412.59	413.70 +	414.07 +	413.39 -	412.56	412.83	413.35 +	413.71	413.49 -	413.20	30
31 413.15 -		412.60	413.70 +	414.07 +	413.39 -	412.54 -	412.85 +	413.35 +	413.72 +	413.49 -	413.21	31	
Monatsmittel	413.33	412.89	412.60 -	413.10	413.95	413.99 +	412.88	412.65	413.07	413.57	413.64	413.28	m ü.M.
Spitze Datum	413.45 1.	413.14 1.	412.72 - 1.	413.71 30.	414.08 31.	414.20 + 8.	413.34 1.	412.86 31.	413.36 30.	413.72 31.	413.72 1.	413.47 1.	m ü.M.
Amplitude	0.31	0.42	0.21 -	1.10 +	0.36	0.85	0.81	0.37	0.50	0.37	0.24	0.29	m

Jahr Mittel: 413.25 Spitze: 414.20 (08.06.2006) Minimum: 412.49 (04.08.2006) Amplitude: 1.71



Periode	2002 - 2006 (4 Jahre)												
Monatsmittel	413.28	413.01	412.87 -	413.12	413.46	413.69 +	413.38	413.38	413.49	413.51	413.49	413.42	m ü.M.
Monats-Spitze Jahr	414.42 2003	413.90 2003	413.59 - 2003	413.71 2003	414.08 2006	414.20 2006	413.92 2002	414.39 2005	414.37 2005	414.34 2002	414.73 + 2002	414.71 2002	m ü.M.
Monats-Minimum Jahr	412.47 2005	412.39 2005	412.37 - 2005	412.48 2005	412.94 + 2005	412.92 2005	412.53 2006	412.49 2006	412.86 2006	412.91 2004	412.80 2004	412.58 2004	m ü.M.
Monats-Amplitude Jahr	0.52 2003	0.43 2003	0.21 - 2006	1.10 2006	0.36 2006	0.85 2006	0.81 2006	1.34 + 2005	0.61 2005	0.37 2006	0.41 2002	0.31 2002	m ü.M.
Periode	Mittel: 413.36 Spitze: 414.73 (24.11.2002) Minimum: 412.37 (11.03.2005) Amplitude: 2.36												



**Grundwasserstände**

**Nr. 5013 Trubikon - Oberwil Zug**

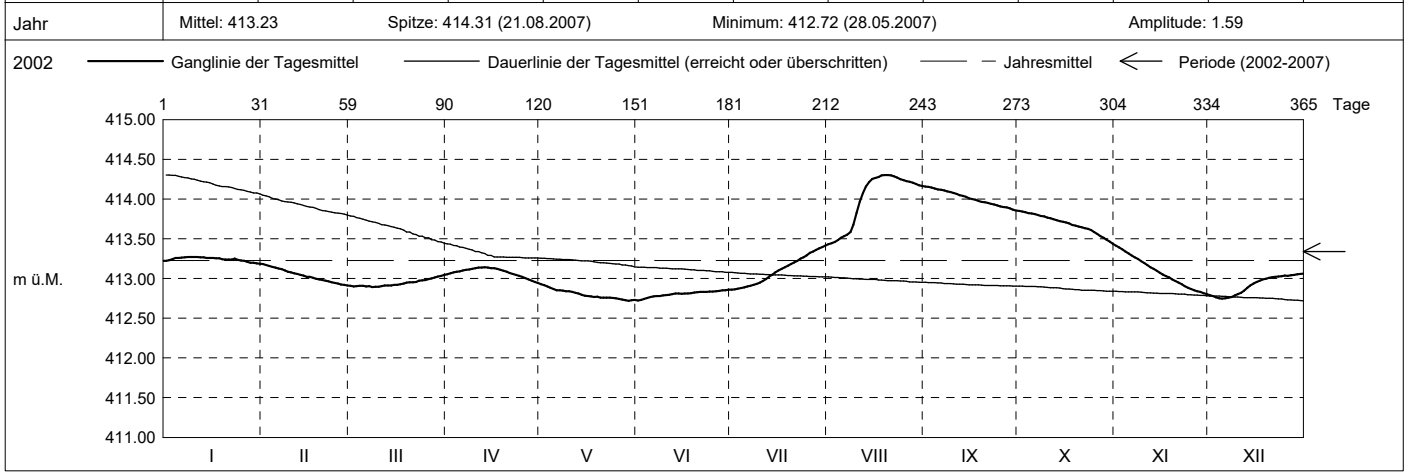
**KANTON ZUG**

Koordinaten: 2'681'087' / 1'221'704'

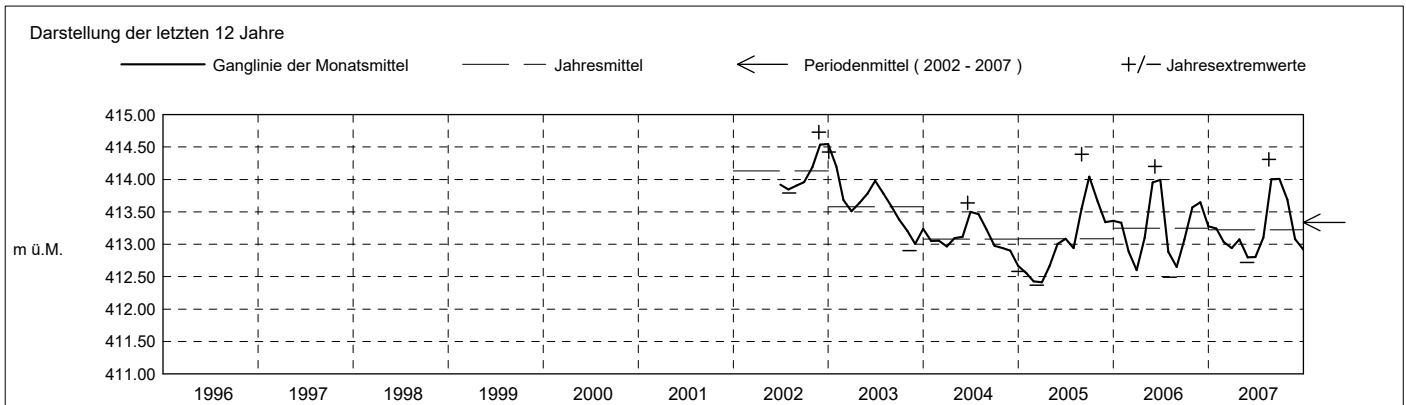
Amt für Umwelt

Abstichpunkt: 431.24 m ü.M. OK Terrain: 430.46 m ü.M.

2007	Januar	Februar	März	April	Mai	Juni	Juli	August	September	Oktober	November	Dezember	
Tagesmittel	1 413.22	413.18 +	412.91	413.05	412.93 +	412.72 -	412.86 -	413.43 -	414.16 +	413.85 +	413.41 +	412.79	1
	2 413.23	413.17	412.90	413.07	412.92	412.73	412.86 -	413.44	414.15	413.84	413.39	412.78	2
	3 413.24	413.16	412.90	413.08	412.90	412.74	412.87	413.46	414.15	413.83	413.36	412.76	3
	4 413.26	413.15	412.91	413.09	412.88	412.76	412.88	413.48	414.13	413.82	413.34	412.75 -	4
	5 413.26	413.14	412.91	413.09	412.87	412.77	412.89	413.51	414.12	413.82	413.32	412.75 -	5
	6 413.26	413.13	412.90	413.10	412.85	412.78	412.90	413.53	414.12	413.81	413.29	412.75 -	6
	7 413.27 +	413.12	412.90	413.11	412.85	412.78	412.91	413.55	414.11	413.80	413.27	412.76	7
	8 413.27 +	413.10	412.89 -	413.11	412.85	412.78	412.92	413.58	414.10	413.79	413.24	412.77	8
	9 413.27 +	413.09	412.90	413.12	412.84	412.79	412.93	413.68	414.09	413.78	413.22	412.79	9
	10 413.27 +	413.08	412.89 -	413.13	412.84	412.79	412.95	413.83	414.08	413.77	413.19	412.80	10
	11 413.27 +	413.07	412.90	413.14 +	412.83	412.80	412.97	413.96	414.06	413.76	413.17	412.82	11
	12 413.27 +	413.06	412.91	413.14 +	412.82	412.80	412.99	414.08	414.05	413.75	413.14	412.85	12
	13 413.27 +	413.04	412.91	413.14 +	412.81	412.81	413.02	414.16	414.04	413.73	413.12	412.88	13
m ü.M.	14 413.26	413.04	412.91	413.14 +	412.80	412.81	413.05	414.21	414.03	413.72	413.10	412.91	14
	15 413.26	413.02	412.92	413.13	412.78	412.81	413.08	414.25	414.01	413.71	413.07	412.94	15
	16 413.26	413.02	412.92	413.13	412.78	412.81	413.10	414.26	414.00	413.71	413.05	412.96	16
	17 413.26	413.01	412.93	413.12	412.77	412.81	413.12	414.28	413.99	413.69	413.03	412.97	17
	18 413.26	413.00	412.94	413.11	412.77	412.82	413.14	414.30 +	413.97	413.67	413.01	412.99	18
	19 413.24	412.99	412.95	413.10	412.77	412.82	413.16	414.30 +	413.96	413.67	412.99	413.00	19
	20 413.24	412.98	412.95	413.09	412.76	412.83	413.18	414.30 +	413.96	413.65	412.97	413.01	20
	21 413.24	412.97	412.95	413.07	412.76	412.83	413.20	414.30 +	413.95	413.65	412.95	413.02	21
	22 413.24	412.96	412.96	413.06	412.76	412.83	413.22	414.29	413.94	413.64	412.93	413.02	22
	23 413.25	412.95	412.97	413.05	412.76	412.83	413.25	414.27	413.93	413.62	412.90	413.02	23
	24 413.23	412.94	412.98	413.03	412.75	412.84	413.27	414.25	413.92	413.61	412.89	413.03	24
	25 413.23	412.94	412.98	413.02	412.75	412.84	413.29	414.24	413.91	413.59	412.87	413.04	25
+ Maximum	26 413.22	412.92	412.99	413.01	412.74	412.84	413.32	414.23	413.90	413.56	412.85	413.03	26
	27 413.21	412.92	413.00	412.99	412.73	412.84	413.34	414.22	413.90	413.53	412.84	413.04	27
- Minimum	28 413.20	412.91 -	413.01	412.97	412.73	412.85	413.36	414.21	413.88	413.51	412.83	413.05	28
	29 413.20		413.02	412.96	412.72 -	412.85	413.38	414.19	413.87	413.49	412.82	413.05	29
	30 413.19 -		413.03	412.95 -	412.73	412.86 +	413.40	414.17	413.85 -	413.46	412.80 -	413.06 +	30
	31 413.19 -		413.04 +	412.73		413.42 +		414.17		413.44 -		413.06 +	31
Monatsmittel	413.24	413.04	412.94	413.08	412.80 -	412.81	413.10	414.00	414.01 +	413.69	413.08	412.92	m ü.M.
Spitze Datum	413.28 11.	413.18 1.	413.05 31.	413.15 13.	412.94 1.	412.86 - 29.	413.42 31.	414.31 + 21.	414.16 1.	413.85 1.	413.42 1.	413.06 29.	m ü.M.
Amplitude	0.10 -	0.27	0.16	0.22	0.22	0.14	0.57	0.89 +	0.31	0.43	0.62	0.32	m
Jahr	Mittel: 413.23		Spitze: 414.31 (21.08.2007)				Minimum: 412.72 (28.05.2007)				Amplitude: 1.59		



Periode	2002 - 2007 ( 5 Jahre )												
Monatsmittel	413.27	413.02	412.89 -	413.12	413.33	413.55	413.34	413.49	413.57 +	413.54	413.42	413.33	m ü.M.
Monats-Spitze Jahr	414.42 2003	413.90 2003	413.59 - 2003	413.71 2003	414.08 2006	414.20 2006	413.92 2002	414.39 2005	414.37 2005	414.34 2002	414.73 + 2002	414.71 2002	m ü.M.
Monats-Minimum Jahr	412.47 2005	412.39 2005	412.37 - 2005	412.48 2005	412.72 2007	412.72 2007	412.53 2006	412.49 2006	412.86 2006	412.91 + 2004	412.80 2004	412.58 2004	m ü.M.
Monats-Amplitude Jahr	0.52 2003	0.43 2003	0.21 - 2006	1.10 2006	0.36 2006	0.85 2006	0.81 2006	1.34 + 2005	0.61 2005	0.43 2007	0.62 2007	0.32 2007	m ü.M.
Periode	Mittel: 413.34		Spitze: 414.73 (24.11.2002)				Minimum: 412.37 (11.03.2005)				Amplitude: 2.36		



**Grundwasserstände**

**Nr. 5013 Trubikon - Oberwil Zug**

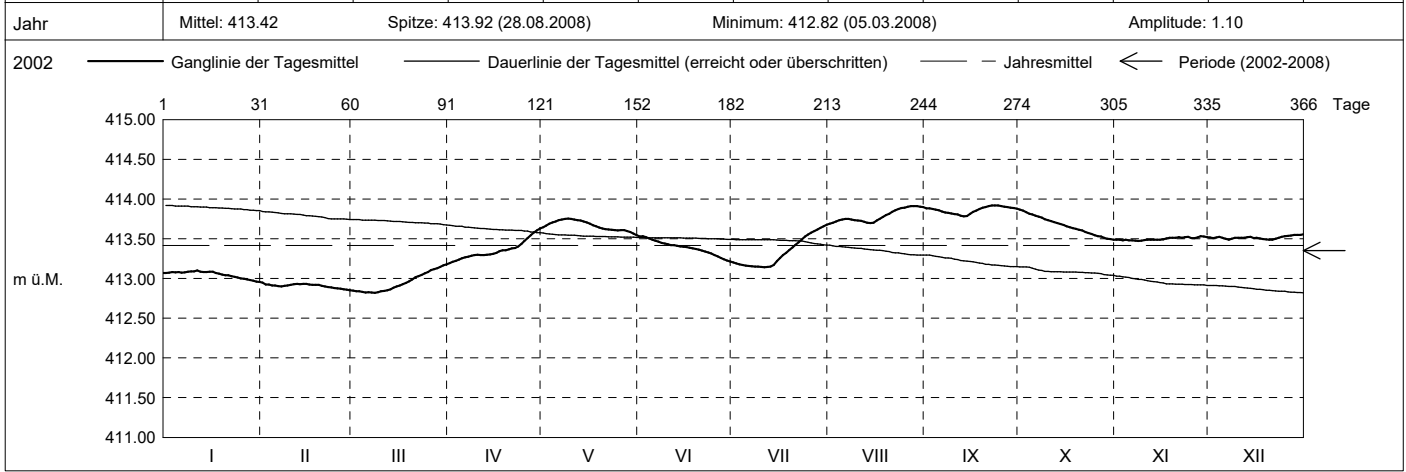
**KANTON ZUG**

Koordinaten: 2'681'087' / 1'221'704'

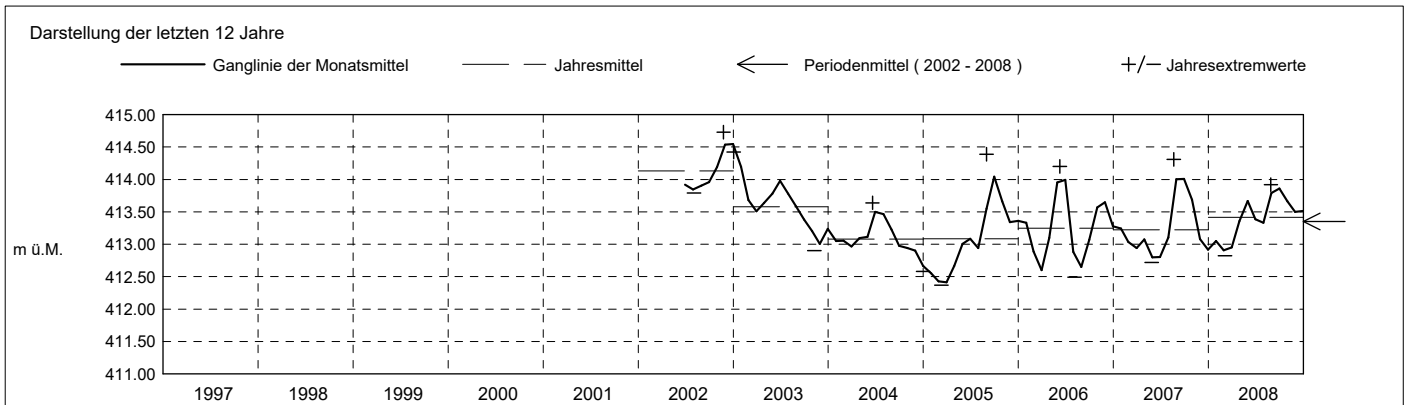
Amt für Umwelt

Abstichpunkt: 431.24 m ü.M. OK Terrain: 430.46 m ü.M.

2008	Januar	Februar	März	April	Mai	Juni	Juli	August	September	Oktober	November	Dezember	
Tagesmittel	1 413.07	412.95 +	412.85	413.19 -	413.65	413.53 +	413.20	413.69 -	413.88	413.87 +	413.49	413.52	1
	2 413.08	412.92	412.84	413.21	413.67	413.53 +	413.19	413.70	413.88	413.85	413.49	413.51	2
	3 413.08	412.92	412.84	413.22	413.69	413.52	413.18	413.72	413.88	413.83	413.48	413.52	3
	4 413.08	412.91	412.83	413.24	413.71	413.50	413.17	413.73	413.87	413.81	413.49	413.52	4
	5 413.08	412.91	412.82 -	413.26	413.72	413.49	413.16	413.74	413.86	413.81	413.48	413.51	5
	6 413.08	412.90	412.83	413.27	413.73	413.48	413.16	413.75	413.84	413.79	413.48	413.50	6
	7 413.08	412.90	412.82 -	413.27	413.74	413.46	413.15	413.75	413.83	413.78	413.48	413.49 -	7
	8 413.08	412.91	412.82 -	413.29	413.75 +	413.45	413.15	413.74	413.82	413.76	413.47 -	413.50	8
	9 413.09	412.91	412.83	413.29	413.75 +	413.44	413.15	413.73	413.82	413.74	413.48	413.51	9
	10 413.09	412.92	412.84	413.30	413.75 +	413.43	413.15	413.73	413.81	413.73	413.48	413.51	10
	11 413.10 +	412.93	412.84	413.29	413.74	413.42	413.14 -	413.72	413.81	413.72	413.49	413.51	11
	12 413.08	412.93	412.85	413.29	413.73	413.42	413.15	413.71	413.79	413.71	413.49	413.51	12
m ü.M.	13 413.08	412.93	412.86	413.30	413.73	413.41	413.15	413.70	413.78 -	413.70	413.49	413.52	13
	14 413.08	412.93	412.88	413.30	413.72	413.40	413.17	413.70	413.79	413.69	413.49	413.52	14
	15 413.09	412.93	412.90	413.31	413.70	413.40	413.22	413.70	413.81	413.67	413.49	413.51	15
	16 413.08	412.92	412.91	413.32	413.69	413.40	413.26	413.73	413.84	413.66	413.49	413.51	16
	17 413.07	412.92	412.93	413.34	413.67	413.39	413.29	413.75	413.86	413.65	413.50	413.50	17
	18 413.06	412.92	412.95	413.35	413.66	413.38	413.32	413.77	413.88	413.63	413.51	413.50	18
	19 413.05	412.92	412.96	413.36	413.64	413.37	413.36	413.80	413.89	413.62	413.51	413.49 -	19
	20 413.04	412.91	412.99	413.37	413.63	413.36	413.39	413.82	413.90	413.61	413.51	413.49 -	20
	21 413.04	412.90	413.02	413.38	413.62	413.35	413.42	413.84	413.91	413.61	413.52	413.49 -	21
	22 413.03	412.89	413.03	413.38	413.61	413.34	413.46	413.86	413.92 +	413.59	413.51	413.50	22
	23 413.02	412.89	413.05	413.40	413.61	413.33	413.49	413.87	413.92 +	413.57	413.52	413.51	23
	24 413.01	412.88	413.07	413.43	413.61	413.31	413.53	413.89	413.92 +	413.56	413.52	413.52	24
+ Maximum	25 413.00	412.87	413.08	413.47	413.61	413.29	413.55	413.89	413.91	413.54	413.51	413.53	25
	26 413.00	412.87	413.10	413.51	413.61	413.28	413.58	413.90	413.90	413.53	413.51	413.54	26
- Minimum	27 412.99	412.86	413.12	413.54	413.61	413.26	413.60	413.91 +	413.90	413.53	413.52	413.54	27
	28 412.98	412.86	413.13	413.58	413.60	413.24	413.62	413.91 +	413.89	413.51	413.53 +	413.55	28
	29 412.97	412.85 -	413.15	413.60	413.58	413.23	413.64	413.91 +	413.89	413.50	413.53 +	413.55	29
	30 412.96 -		413.17	413.63 +	413.56	413.21 -	413.66	413.90	413.88	413.50	413.52	413.55	30
	31 412.96 -		413.18 +		413.54 -		413.68 +	413.90		413.49 -		413.56 +	31
Monatsmittel	413.05	412.91 -	412.95	413.36	413.67	413.39	413.33	413.79	413.86 +	413.66	413.50	413.52	m ü.M.
Spitze Datum	413.10 10.	412.95 - 1.	413.18 31.	413.64 30.	413.76 9.	413.54 2.	413.68 31.	413.92 + 28.	413.92 + 22.	413.88 1.	413.54 23.	413.56 31.	m ü.M.
Amplitude	0.15	0.10	0.36	0.45	0.23	0.33	0.54 +	0.24	0.14	0.39	0.08	0.07 -	m
Jahr	Mittel: 413.42		Spitze: 413.92 (28.08.2008)				Minimum: 412.82 (05.03.2008)				Amplitude: 1.10		



Periode	2002 - 2008 ( 6 Jahre )												
Monatsmittel	413.24	413.00	412.90 -	413.16	413.39	413.52	413.34	413.53	413.61 +	413.56	413.43	413.36	m ü.M.
Monats-Spitze Jahr	414.42 2003	413.90 2003	413.59 - 2003	413.71 2003	414.08 2006	414.20 2006	413.92 2002	414.39 2005	414.37 2005	414.34 2002	414.73 + 2002	414.71 2002	m ü.M.
Monats-Minimum Jahr	412.47 2005	412.39 2005	412.37 - 2005	412.48 2005	412.72 2007	412.72 2007	412.53 2006	412.49 2006	412.86 2006	412.91 + 2004	412.80 2004	412.58 2004	m ü.M.
Monats-Amplitude Jahr	0.52 2003	0.43 2003	0.36 2008	1.10 2006	0.36 2006	0.85 2006	0.81 2006	1.34 + 2005	0.61 2005	0.43 2007	0.62 2007	0.32 - 2007	m ü.M.
Periode	Mittel: 413.35		Spitze: 414.73 (24.11.2002)				Minimum: 412.37 (11.03.2005)				Amplitude: 2.36		



**Grundwasserstände**

**Nr. 5013 Trubikon - Oberwil Zug**

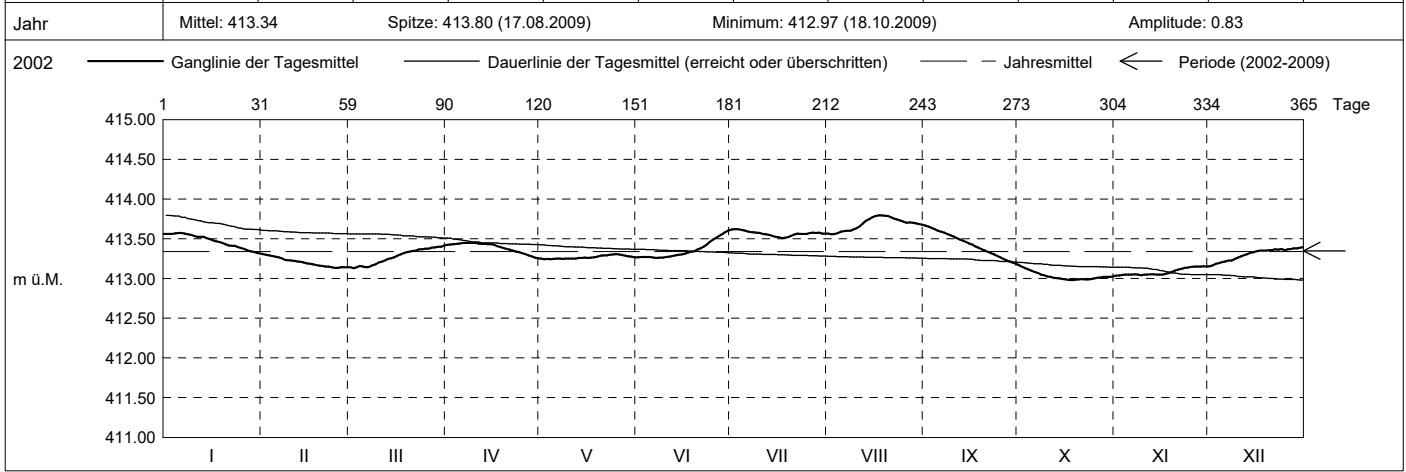
**KANTON ZUG**

Koordinaten: 2'681'087' / 1'221'704'

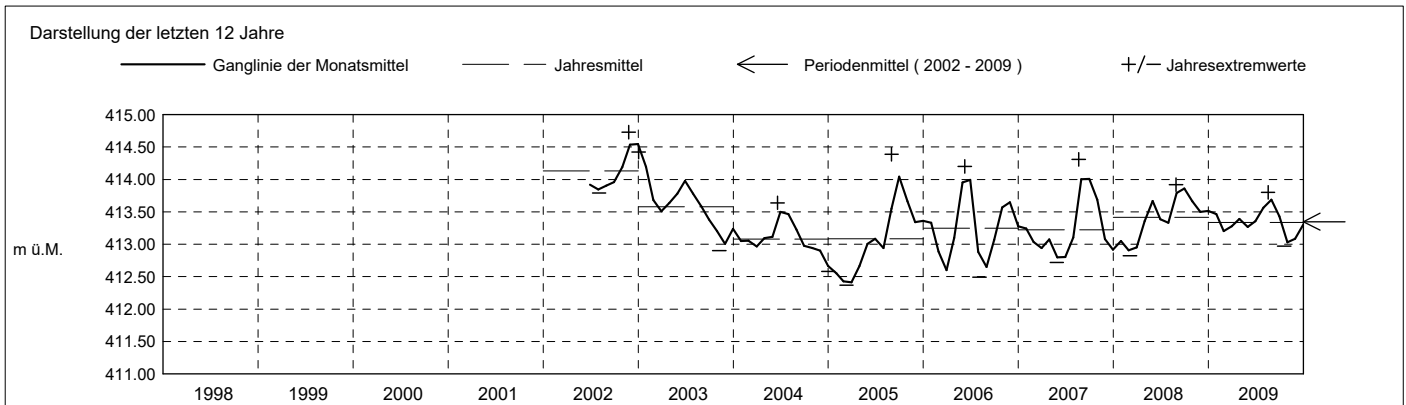
Amt für Umwelt

Abstichpunkt: 431.24 m ü.M. OK Terrain: 430.46 m ü.M.

2009	Januar	Februar	März	April	Mai	Juni	Juli	August	September	Oktober	November	Dezember	
Tagesmittel	1 413.56	413.31 +	413.14	413.42	413.25	413.27	413.61	413.57	413.66 +	413.17 +	413.04 -	413.15 -	1
	2 413.56	413.30	413.13 -	413.43	413.24 -	413.27	413.62 +	413.56 -	413.65	413.15	413.04 -	413.17	2
	3 413.56	413.29	413.14	413.43	413.24 -	413.27	413.62 +	413.56 -	413.64	413.13	413.04 -	413.19	3
	4 413.57 +	413.28	413.16	413.43	413.24 -	413.27	413.61	413.57	413.62	413.11	413.05	413.19	4
	5 413.57 +	413.27	413.15	413.44	413.25	413.27	413.60	413.59	413.60	413.10	413.05	413.21	5
	6 413.57 +	413.27	413.14	413.45 +	413.25	413.26 -	413.59	413.60	413.59	413.08	413.05	413.21	6
	7 413.56	413.26	413.15	413.45 +	413.25	413.26 -	413.58	413.60	413.58	413.07	413.05	413.22	7
	8 413.55	413.24	413.17	413.45 +	413.25	413.26 -	413.58	413.60	413.56	413.05	413.05	413.23	8
	9 413.55	413.23	413.18	413.45 +	413.25	413.26 -	413.57	413.62	413.54	413.04	413.04 -	413.24	9
	10 413.54	413.23	413.20	413.45 +	413.25	413.27	413.57	413.63	413.53	413.03	413.05	413.26	10
	11 413.52	413.22	413.21	413.44	413.25	413.27	413.56	413.66	413.51	413.02	413.05	413.28	11
	12 413.52	413.21	413.23	413.43	413.25	413.28	413.56	413.69	413.49	413.01	413.05	413.29	12
m ü.M.	13 413.52	413.21	413.24	413.43	413.26	413.29	413.55	413.73	413.48	413.01	413.05	413.31	13
	14 413.51	413.20	413.26	413.43	413.26	413.30	413.54	413.75	413.46	413.00	413.05	413.32	14
	15 413.49	413.19	413.27	413.43	413.26	413.30	413.52	413.77	413.44	412.99	413.05	413.33	15
	16 413.48	413.19	413.29	413.42	413.26	413.31	413.52	413.78	413.43	412.99	413.05	413.34	16
	17 413.47	413.18	413.30	413.41	413.26	413.33	413.51 -	413.79 +	413.40	412.98 -	413.06	413.35	17
	18 413.46	413.17	413.32	413.40	413.27	413.33	413.51 -	413.79 +	413.39	412.98 -	413.07	413.35	18
	19 413.45	413.16	413.33	413.38	413.28	413.34	413.52	413.79 +	413.37	412.98 -	413.09	413.35	19
	20 413.43	413.16	413.34	413.37	413.29	413.36	413.54	413.79 +	413.35	412.99	413.10	413.35	20
	21 413.42	413.15	413.35	413.36	413.29	413.38	413.55	413.77	413.33	412.99	413.11	413.36	21
	22 413.41	413.15	413.35	413.35	413.29	413.40	413.56	413.75	413.32	412.99	413.12	413.36	22
	23 413.41	413.14	413.37	413.34	413.30	413.43	413.56	413.74	413.30	412.99	413.13	413.36	23
	24 413.39	413.14	413.37	413.33	413.30	413.46	413.56	413.73	413.28	412.99	413.14	413.37	24
+ Maximum	25 413.38	413.13 -	413.38	413.32	413.31 +	413.49	413.56	413.71	413.27	413.00	413.15 +	413.35	25
	26 413.37	413.14	413.38	413.31	413.30	413.51	413.57	413.70	413.25	413.01	413.15 +	413.37	26
	27 413.36	413.14	413.39	413.29	413.29	413.54	413.58	413.71	413.23	413.01	413.15 +	413.37	27
- Minimum	28 413.34	413.14	413.39	413.28	413.29	413.56	413.57	413.70	413.21	413.02	413.15 +	413.38	28
	29 413.33	413.14	413.40	413.26	413.28	413.58	413.58	413.69	413.20	413.02	413.15 +	413.38	29
	30 413.32 -	413.14	413.40	413.25 -	413.27	413.60 +	413.57	413.69	413.18 -	413.02	413.15 +	413.39	30
	31 413.32 -	413.14 +	413.41 +	413.27	413.27	413.60 +	413.57	413.68	413.18 -	413.02	413.15 +	413.40 +	31
Monatsmittel	413.47	413.20	413.27	413.39	413.27	413.36	413.57	413.69 +	413.43	413.03 -	413.08	413.30	m ü.M.
Spitze Datum	413.57 3.	413.31 1.	413.42 31.	413.45 6.	413.31 24.	413.61 30.	413.63 2.	413.80 + 17.	413.67 1.	413.17 1.	413.16 - 29.	413.40 31.	m ü.M.
Amplitude	0.26	0.18	0.29	0.20	0.07 -	0.36	0.13	0.25	0.49 +	0.20	0.13	0.25	m
Jahr	Mittel: 413.34      Spitze: 413.80 (17.08.2009)      Minimum: 412.97 (18.10.2009)      Amplitude: 0.83												



Periode	2002 - 2009 ( 7 Jahre )												
Monatsmittel	413.27	413.03	412.95 -	413.19	413.37	413.50	413.36	413.55	413.59 +	413.49	413.39	413.35	m ü.M.
Monats-Spitze Jahr	414.42 2003	413.90 2003	413.59 - 2003	413.71 2003	414.08 2006	414.20 2006	413.92 2002	414.39 2005	414.37 2005	414.34 2002	414.73 + 2002	414.71 2002	m ü.M.
Monats-Minimum Jahr	412.47 2005	412.39 2005	412.37 - 2005	412.48 2005	412.72 2007	412.72 2007	412.53 2006	412.49 2006	412.86 2006	412.91 + 2004	412.80 2004	412.58 2004	m ü.M.
Monats-Amplitude Jahr	0.52 2003	0.43 2003	0.36 2008	1.10 2006	0.36 2006	0.85 2006	0.81 2006	1.34 + 2005	0.61 2005	0.43 2007	0.62 2007	0.32 - 2007	m ü.M.
Periode	Mittel: 413.35      Spitze: 414.73 (24.11.2002)      Minimum: 412.37 (11.03.2005)      Amplitude: 2.36												





**Grundwasserstände**

**Nr. 5013 Trubikon - Oberwil Zug**

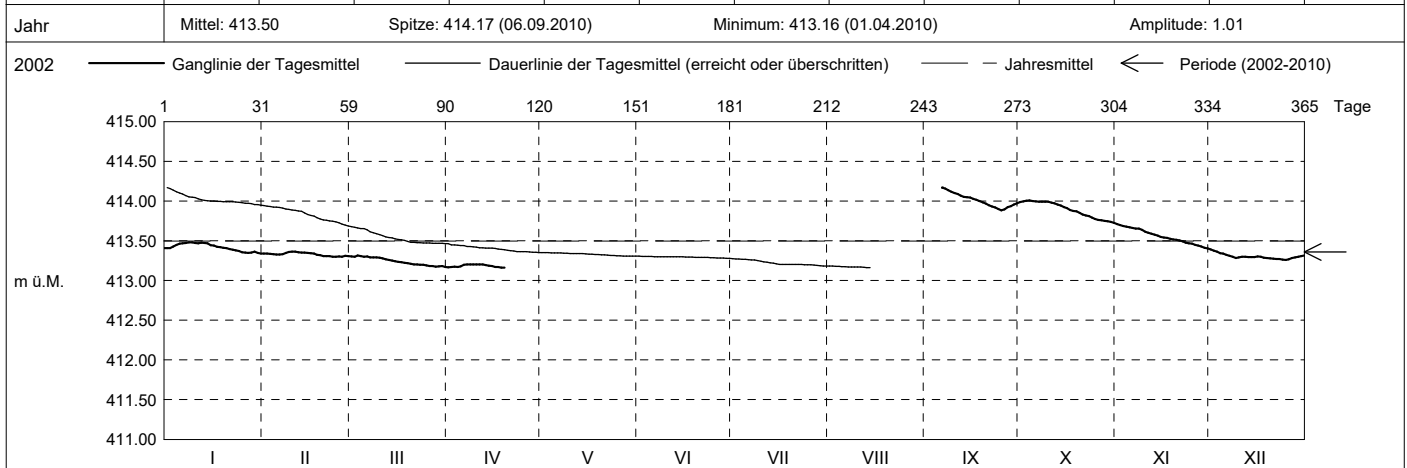
**KANTON ZUG**

Koordinaten: 2'681'087' / 1'221'704'

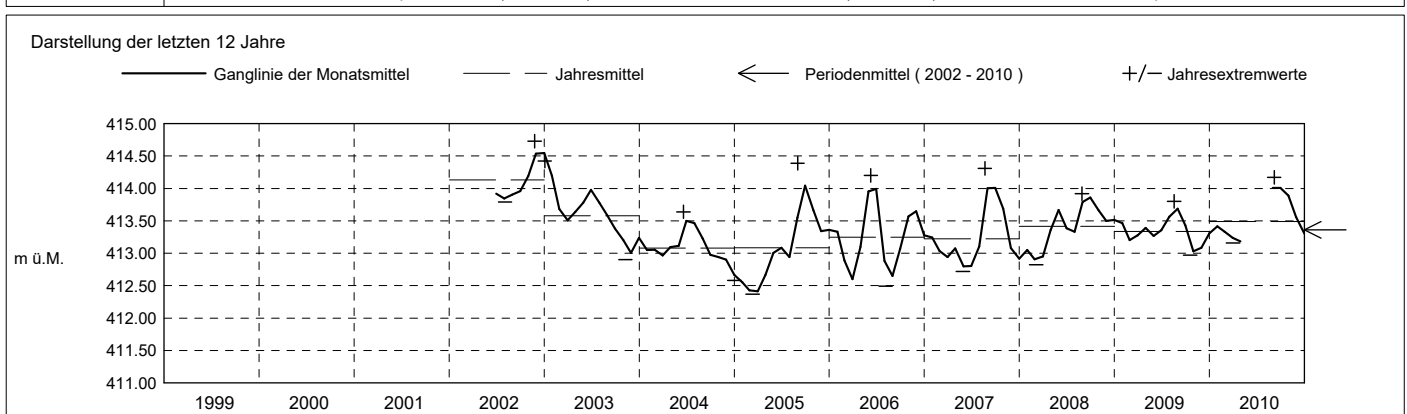
Amt für Umwelt

Abstichpunkt: 431.24 m ü.M. OK Terrain: 430.46 m ü.M.

2010	Januar	Februar	März	April	Mai	Juni	Juli	August	September	Oktober	November	Dezember	
Tagesmittel	1 413.40	413.34	413.30	413.17						413.99	413.71 +	413.39 +	1
	2 413.41	413.34	413.30	413.17						413.99	413.70	413.38	2
	3 413.43	413.33	413.32 +	413.17						414.00	413.69	413.36	3
	4 413.45	413.33	413.31	413.17						414.01 +	413.68	413.34	4
	5 413.46	413.33	413.30	413.18						414.00	413.67	413.34	5
	6 413.47	413.33	413.30	413.20 +					414.17 +	414.00	413.66	413.32	6
	7 413.47	413.33	413.29	413.20 +					414.16	413.99	413.65	413.31	7
	8 413.48 +	413.35	413.29	413.20 +					414.14	413.99	413.65	413.30	8
	9 413.48 +	413.36 +	413.29	413.20 +					414.12	413.99	413.64	413.28	9
	10 413.47	413.36 +	413.29	413.20 +					414.10	413.99	413.61	413.29	10
	11 413.47	413.36 +	413.28	413.20 +					414.09	413.98	413.60	413.30	11
	12 413.48 +	413.35	413.27	413.20 +					414.07	413.97	413.59	413.30	12
m ü.M.	13 413.47	413.35	413.26	413.19					414.05	413.96	413.58	413.29	13
	14 413.47	413.35	413.25	413.19					414.05	413.94	413.56	413.29	14
	15 413.44	413.35	413.24	413.18					414.04	413.92	413.55	413.29	15
	16 413.44	413.34	413.23	413.17					414.03	413.91	413.54	413.30	16
	17 413.42	413.34	413.23	413.17					414.02	413.89	413.54	413.30	17
	18 413.42	413.32	413.22	413.16 -					414.00	413.88	413.52	413.29	18
	19 413.41	413.32	413.22	413.16 -					413.98	413.87	413.52	413.28	19
	20 413.41	413.31	413.21						413.97	413.85	413.51	413.28	20
	21 413.40	413.31	413.20						413.95	413.83	413.50	413.27	21
	22 413.39	413.31	413.20						413.93	413.82	413.49	413.27	22
	23 413.38	413.30 -	413.20						413.92	413.81	413.48	413.27	23
	24 413.37	413.30 -	413.20						413.90	413.79	413.47	413.26 -	24
+ Maximum	25 413.36	413.30 -	413.19						413.88 -	413.77	413.46	413.26 -	25
	26 413.35	413.30 -	413.18						413.89	413.76	413.45	413.27	26
	27 413.35	413.31	413.18						413.92	413.76	413.44	413.28	27
- Minimum	28 413.35	413.31	413.17 -						413.94	413.75	413.43	413.29	28
	29 413.36		413.18						413.96	413.75	413.41	413.30	29
	30 413.35		413.18						413.97	413.74	413.40 -	413.31	30
	31 413.34 -		413.17 -							413.73 -		413.31	31
Monatsmittel	413.42	413.33	413.24	413.18 -					414.01 +	413.89	413.56	413.30	m ü.M.
Spitze Datum	413.48 8.	413.37 10.	413.32 3.	413.21 - 7.					414.17 + 6.	414.02 4.	413.72 1.	413.40 1.	m ü.M.
Amplitude	0.14	0.08	0.15	0.05 -					0.30	0.30	0.32 +	0.14	m
Jahr	Mittel: 413.50		Spitze: 414.17 (06.09.2010)				Minimum: 413.16 (01.04.2010)				Amplitude: 1.01		



Periode	2002 - 2010 ( 8 Jahre )												
Monatsmittel	413.29	413.07	412.99 -	413.19	413.37	413.50	413.36	413.55	413.64 +	413.54	413.41	413.35	m ü.M.
Monats-Spitze Jahr	414.42 2003	413.90 2003	413.59 - 2003	413.71 2003	414.08 2006	414.20 2006	413.92 2002	414.39 2005	414.37 2005	414.34 2002	414.73 + 2002	414.71 2002	m ü.M.
Monats-Minimum Jahr	412.47 2005	412.39 2005	412.37 - 2005	412.48 2005	412.72 2007	412.72 2007	412.53 2006	412.49 2006	412.86 2006	412.91 + 2004	412.80 2004	412.58 2004	m ü.M.
Monats-Amplitude Jahr	0.52 2003	0.43 2003	0.36 2008	1.10 2006	0.36 2006	0.85 2006	0.81 2006	1.34 + 2005	0.61 2005	0.43 2007	0.62 2007	0.32 - 2007	m ü.M.
Periode	Mittel: 413.36		Spitze: 414.73 (24.11.2002)				Minimum: 412.37 (11.03.2005)				Amplitude: 2.36		



**Grundwasserstände**

**Nr. 5013 Trubikon - Oberwil Zug**

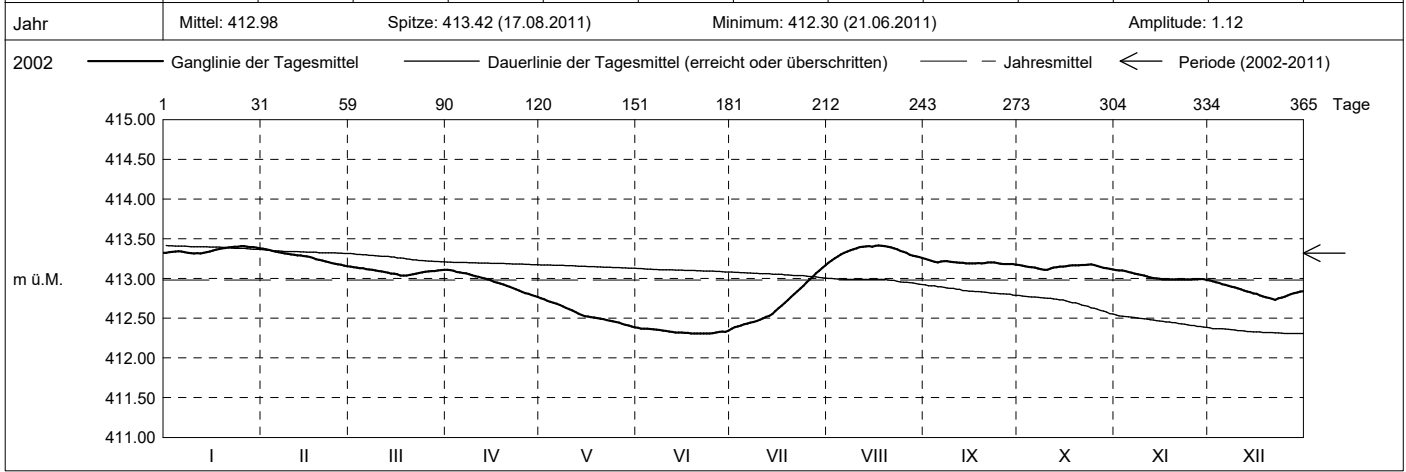
**KANTON ZUG**

Koordinaten: 2'681'087' / 1'221'704'

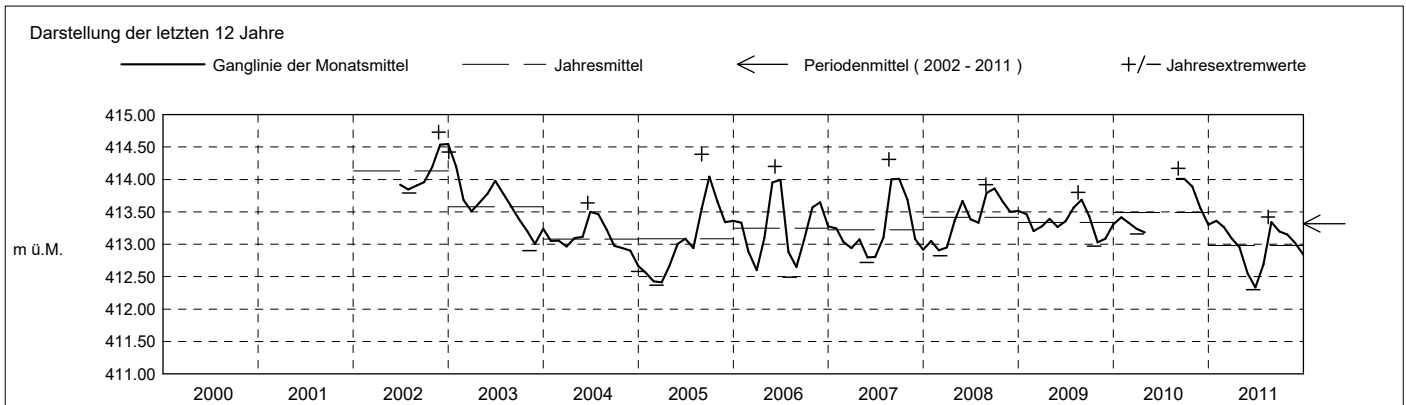
Amt für Umwelt

Abstichpunkt: 431.24 m ü.M. OK Terrain: 430.46 m ü.M.

2011	Januar	Februar	März	April	Mai	Juni	Juli	August	September	Oktober	November	Dezember	
Tagesmittel	1 413.32	413.37 +	413.15 +	413.11 +	412.75 +	412.38 +	412.37 -	413.20 -	413.24 +	413.17	413.11 +	412.98 +	1
	2 413.33	413.37 +	413.14	413.11 +	412.74	412.37	412.39	413.23	413.23	413.16	413.10	412.96	2
	3 413.33	413.36	413.14	413.10	412.72	412.37	412.40	413.25	413.22	413.15	413.10	412.95	3
	4 413.34	413.35	413.13	413.08	412.71	412.37	412.41	413.28	413.21	413.15	413.09	412.94	4
	5 413.34	413.34	413.13	413.08	412.70	412.36	412.42	413.30	413.20	413.14	413.08	412.93	5
	6 413.34	413.33	413.12	413.07	412.68	412.36	412.43	413.32	413.21	413.14	413.07	412.92	6
	7 413.33	413.32	413.11	413.06	412.67	412.36	412.45	413.34	413.22	413.12	413.06	412.91	7
	8 413.32	413.32	413.11	413.05	412.65	412.35	412.45	413.35	413.22	413.12	413.05	412.90	8
	9 413.32	413.31	413.10	413.04	412.63	412.35	412.46	413.36	413.21	413.11 -	413.04	412.89	9
	10 413.32	413.30	413.09	413.03	412.61	412.34	412.48	413.38	413.21	413.11 -	413.04	412.87	10
m ü.M.	11 413.32	413.30	413.09	413.02	412.60	412.33	412.50	413.40	413.20	413.13	413.03	412.86	11
	12 413.31 -	413.29	413.08	413.01	412.58	412.33	412.52	413.40	413.20	413.14	413.01	412.85	12
	13 413.32	413.29	413.07	413.00	412.56	412.32	412.53	413.40	413.20	413.14	413.01	412.84	13
	14 413.33	413.28	413.06	412.99	412.54	412.32	412.55	413.41 +	413.19	413.15	413.00	412.83	14
	15 413.34	413.28	413.06	412.98	412.52	412.32	412.59	413.40	413.19	413.15	413.00	412.81	15
	16 413.35	413.27	413.05	412.96	412.52	412.32	412.63	413.41 +	413.19	413.15	412.99	412.81	16
	17 413.36	413.26	413.04 -	412.95	412.51	412.31 -	412.66	413.41 +	413.19	413.16	412.99	412.79	17
	18 413.37	413.24	413.04 -	412.93	412.51	412.31 -	412.70	413.41 +	413.19	413.17	412.99	412.78	18
	19 413.38	413.24	413.04 -	412.92	412.50	412.31 -	412.73	413.40	413.19	413.16	412.99	412.76	19
	20 413.38	413.22	413.04 -	412.91	412.49	412.31 -	412.77	413.40	413.19	413.17	412.99	412.76	20
+ Maximum	21 413.39	413.21	413.05	412.90	412.49	412.31 -	412.80	413.39	413.20	413.17	412.99	412.74	21
	22 413.40	413.20	413.06	412.88	412.48	412.31 -	412.84	413.38	413.20	413.17	412.99	412.73 -	22
	23 413.40	413.19	413.07	412.86	412.47	412.31 -	412.88	413.36	413.20	413.17	412.99	412.75	23
	24 413.40	413.19	413.08	412.85	412.46	412.31 -	412.91	413.35	413.19	413.18 +	412.99	412.76	24
	25 413.40	413.18	413.09	412.83	412.45	412.31 -	412.95	413.33	413.18	413.17	412.99	412.77	25
	26 413.41 +	413.17	413.09	412.82	412.44	412.32	412.99	413.32	413.18	413.16	412.99	412.79	26
	27 413.40	413.16	413.09	412.80	412.43	412.33	413.03	413.30	413.18	413.15	412.99	412.80	27
	28 413.40	413.15 -	413.10	412.79	412.42	412.33	413.06	413.29	413.18	413.13	412.99	412.81	28
	29 413.39	413.14	413.10	412.78	412.41	412.33	413.10	413.28	413.18	413.13	412.99	412.82	29
	30 413.39	413.13	413.11	412.77 -	412.40	412.34	413.13	413.27	413.17 -	413.12	412.98 -	412.83	30
31 413.38	413.11	413.11	412.76 -	412.38 -	412.34	413.17 +	413.26	413.17 -	413.11 -	412.98 -	412.84	31	
Monatsmittel	413.36 +	413.27	413.09	412.96	412.55	412.33 -	412.69	413.34	413.20	413.15	413.02	412.84	m ü.M.
Spitze Datum	413.41 25.	413.38 1.	413.15 1.	413.11 1.	412.76 1.	412.38 - 1.	413.18 31.	413.42 + 17.	413.25 1.	413.18 22.	413.11 1.	412.98 1.	m ü.M.
Amplitude	0.10	0.23	0.12	0.35	0.39	0.08	0.82 +	0.24	0.08	0.07 -	0.13	0.25	m
Jahr	Mittel: 412.98 Spitze: 413.42 (17.08.2011) Minimum: 412.30 (21.06.2011) Amplitude: 1.12												



Periode	2002 - 2011 ( 9 Jahre )												
Monatsmittel	413.30	413.09	413.00 -	413.16	413.27	413.37	413.29	413.53	413.59 +	413.50	413.37	413.30	m ü.M.
Monats-Spitze Jahr	414.42 2003	413.90 2003	413.59 - 2003	413.71 2003	414.08 2006	414.20 2006	413.92 2002	414.39 2005	414.37 2005	414.34 2002	414.73 + 2002	414.71 2002	m ü.M.
Monats-Minimum Jahr	412.47 2005	412.39 2005	412.37 2005	412.48 2005	412.37 2011	412.30 - 2011	412.36 2011	412.49 2006	412.86 2006	412.91 + 2004	412.80 2004	412.58 2004	m ü.M.
Monats-Amplitude Jahr	0.52 2003	0.43 2003	0.36 2008	1.10 2006	0.39 2011	0.85 2006	0.82 2011	1.34 + 2005	0.61 2005	0.43 2007	0.62 2007	0.32 - 2007	m ü.M.
Periode	Mittel: 413.32 Spitze: 414.73 (24.11.2002) Minimum: 412.30 (21.06.2011) Amplitude: 2.43												



**Grundwasserstände**

**Nr. 5013 Trubikon - Oberwil Zug**

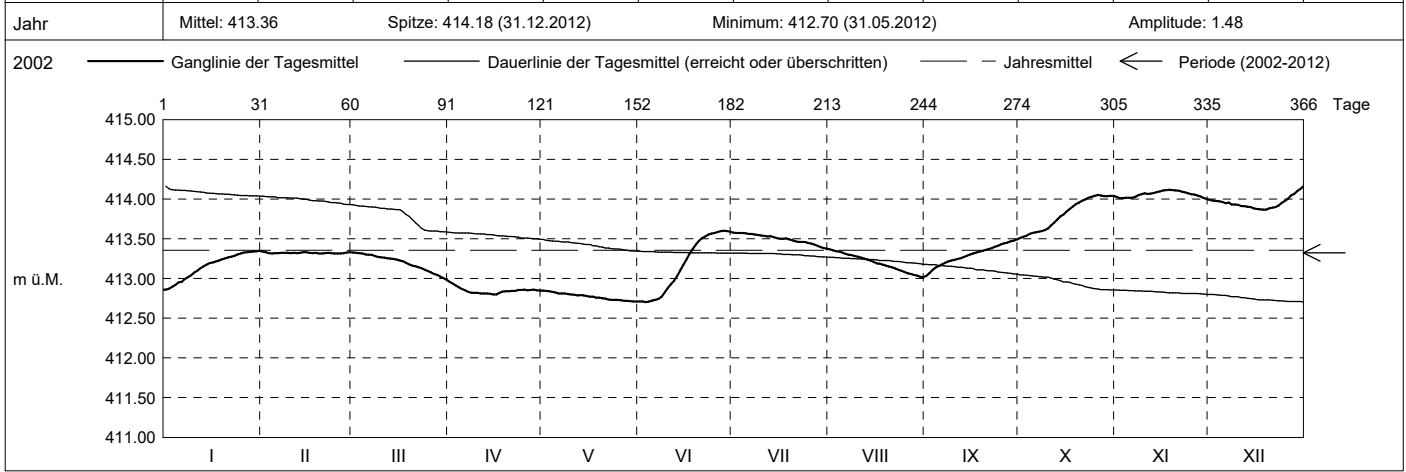
**KANTON ZUG**

Koordinaten: 2'681'087' / 1'221'704'

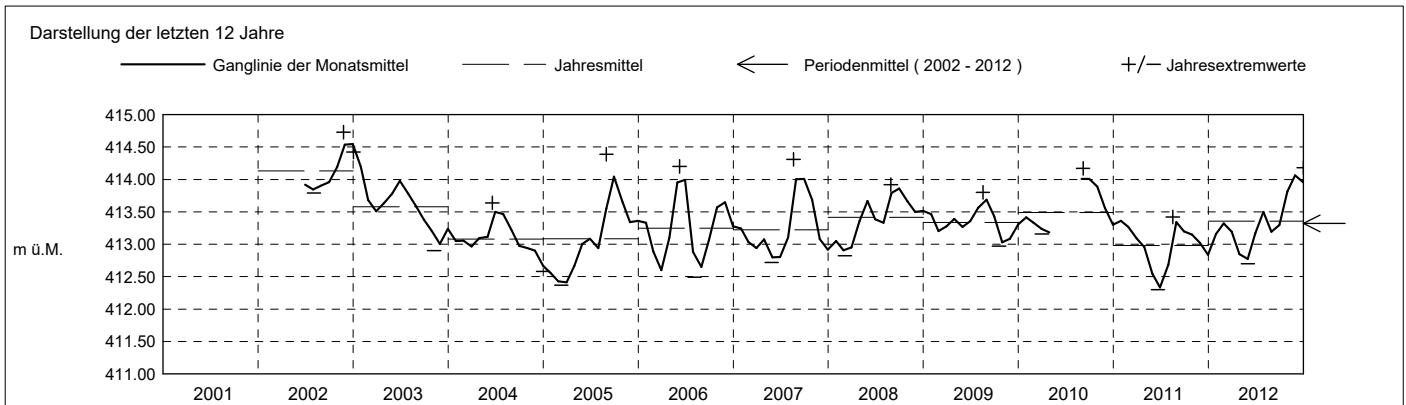
Amt für Umwelt

Abstichpunkt: 431.24 m ü.M. OK Terrain: 430.46 m ü.M.

2012	Januar	Februar	März	April	Mai	Juni	Juli	August	September	Oktober	November	Dezember	
Tagesmittel	412.86 -	413.34 +	413.33 +	412.96 +	412.85 +	412.71	413.58 +	413.37 +	413.03 -	413.51 -	414.03	413.99	1
	412.87	413.33	413.32	412.94	412.84	412.71	413.57	413.35	413.07	413.52	414.01	413.98	2
	412.89	413.32	413.32	412.91	412.84	412.70 -	413.57	413.34	413.11	413.54	414.01	413.97	3
	412.92	413.31 -	413.31	412.89	412.83	412.71	413.57	413.34	413.14	413.56	414.02	413.97	4
	412.95	413.32	413.30	412.87	412.82	412.72	413.57	413.33	413.16	413.57	414.02	413.96	5
	412.96	413.32	413.30	412.85	412.81	412.73	413.56	413.31	413.18	413.58	414.01	413.95	6
	412.99	413.32	413.30	412.83	412.81	412.74	413.56	413.30	413.20	413.59	414.03	413.96	7
	413.02	413.32	413.28	412.82	412.81	412.77	413.55	413.29	413.21	413.60	414.05	413.93	8
	413.04	413.32	413.27	412.82	412.80	412.83	413.55	413.28	413.23	413.61	414.06	413.93	9
	413.07	413.32	413.27	412.82	412.80	412.88	413.54	413.27	413.24	413.63	414.07	413.93	10
	413.10	413.32	413.26	412.81	412.79	412.93	413.54	413.26	413.25	413.67	414.06	413.91	11
	413.13	413.32	413.26	412.81	412.79	412.97	413.53	413.25	413.26	413.70	414.07	413.91	12
	413.15	413.32	413.25	412.81	412.79	413.03	413.53	413.24	413.27	413.74	414.08	413.90	13
m ü.M.	413.17	413.33	413.25	412.81	412.79	413.10	413.52	413.23	413.29	413.78	414.09	413.90	14
	413.19	413.33	413.24	412.80 -	412.78	413.17	413.51	413.21	413.30	413.80	414.10	413.88	15
	413.20	413.32	413.23	412.80 -	412.77	413.24	413.50	413.19	413.32	413.84	414.11 +	413.87	16
	413.21	413.32	413.22	412.82	412.77	413.31	413.50	413.18	413.33	413.87	414.11 +	413.87	17
	413.23	413.32	413.20	412.83	412.76	413.37	413.50	413.17	413.34	413.90	414.11 +	413.86 -	18
	413.24	413.32	413.18	412.84	412.76	413.43	413.49	413.16	413.35	413.93	414.11 +	413.87	19
	413.25	413.31 -	413.16	412.84	412.75	413.47	413.48	413.15	413.36	413.96	414.11 +	413.88	20
	413.27	413.32	413.15	412.84	412.75	413.51	413.47	413.14	413.37	413.98	414.10	413.89	21
	413.27	413.32	413.14	412.84	412.74	413.53	413.46	413.13	413.38	414.00	414.09	413.89	22
	413.29	413.32	413.13	412.85	412.73	413.55	413.46	413.11	413.40	414.01	414.08	413.92	23
	413.30	413.31 -	413.11	412.85	412.73	413.57	413.46	413.10	413.41	414.03	414.07	413.95	24
+ Maximum	413.32	413.31 -	413.09	412.86	412.73	413.57	413.45	413.08	413.43	414.04	414.06	413.98	25
- Minimum	413.33	413.31 -	413.08	412.85	412.73	413.58	413.44	413.06	413.44	414.05 +	414.05	414.01	26
	413.33	413.32	413.06	412.85	412.72	413.60 +	413.43	413.06	413.44	414.04	414.04	414.04	27
	413.33	413.33	413.05	412.86	412.72	413.60 +	413.41	413.04	413.47	414.03	414.03	414.06	28
	413.34	413.33	413.03	412.85	412.71 -	413.60 +	413.39	413.04	413.48	414.03	414.01	414.10	29
	413.34	413.33	413.03	412.85	412.71 -	413.59	413.38 -	413.02 -	413.49 +	414.04	414.00 -	414.13	30
	413.35 +	413.32	412.98 -	412.85	412.71 -	413.59	413.38 -	413.02 -	413.49 +	414.04	414.00 -	414.16 +	31
Monatsmittel	413.16	413.32	413.20	412.85	412.77 -	413.17	413.50	413.19	413.30	413.81	414.06 +	413.95	m ü.M.
Spitze Datum	413.35 30.	413.34 1.	413.33 1.	412.97 1.	412.85 - 1.	413.60 27.	413.59 1.	413.37 1.	413.50 30.	414.06 26.	414.12 17.	414.18 + 31.	m ü.M.
Amplitude	0.50	0.03 -	0.36	0.18	0.15	0.90 +	0.22	0.36	0.48	0.56	0.12	0.32	m
Jahr	Mittel: 413.36      Spitze: 414.18 (31.12.2012)      Minimum: 412.70 (31.05.2012)      Amplitude: 1.48												



Periode	2002 - 2012 (10 Jahre)												
Monatsmittel	413.28	413.11	413.02 -	413.13	413.21	413.35	413.31	413.49	413.57 +	413.53	413.43	413.36	m ü.M.
Monats-Spitze Jahr	414.42 2003	413.90 2003	413.59 - 2003	413.71 2003	414.08 2006	414.20 2006	413.92 2002	414.39 2005	414.37 2005	414.34 2002	414.73 + 2002	414.71 2002	m ü.M.
Monats-Minimum Jahr	412.47 2005	412.39 2005	412.37 2005	412.48 2005	412.37 2011	412.30 - 2011	412.36 2011	412.49 2006	412.86 2006	412.91 + 2004	412.80 2004	412.58 2004	m ü.M.
Monats-Amplitude Jahr	0.52 2003	0.43 2003	0.36 2008	1.10 2006	0.39 2011	0.90 2012	0.82 2011	1.34 + 2005	0.61 2005	0.56 2012	0.62 2007	0.32 - 2007	m ü.M.
Periode	Mittel: 413.32      Spitze: 414.73 (24.11.2002)      Minimum: 412.30 (21.06.2011)      Amplitude: 2.43												



**Grundwasserstände**

**Nr. 5013 Trubikon - Oberwil Zug**

**KANTON ZUG**

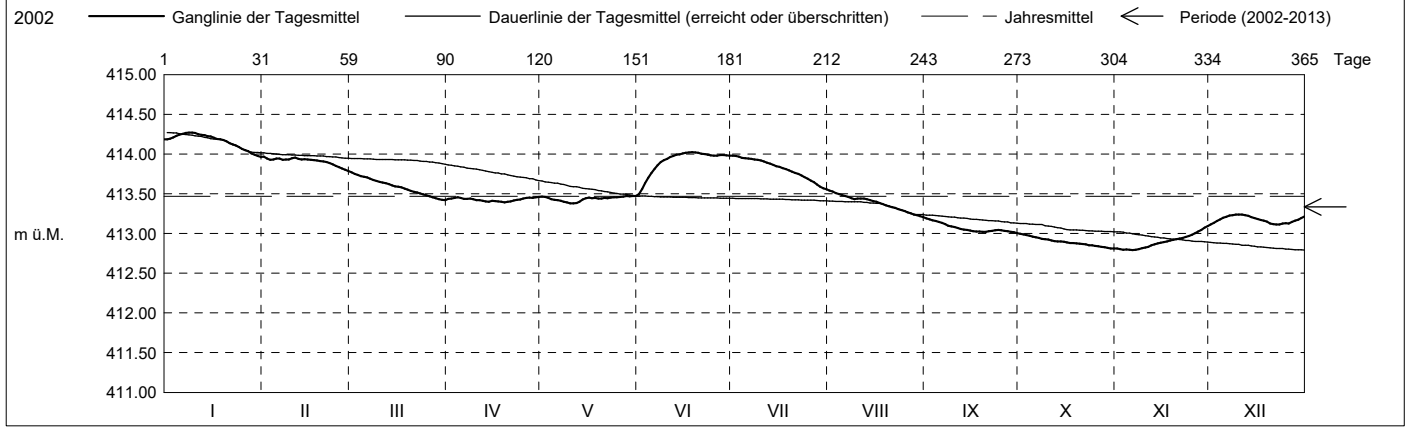
Koordinaten: 2'681'087' / 1'221'704'

Amt für Umwelt

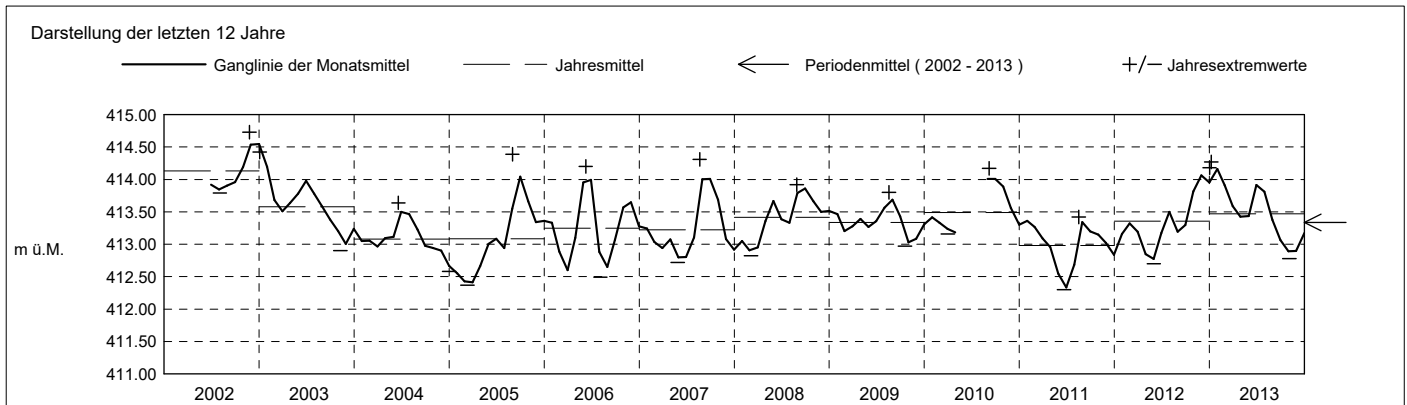
Abstichpunkt: 431.24 m ü.M. OK Terrain: 430.46 m ü.M.

2013	Januar	Februar	März	April	Mai	Juni	Juli	August	September	Oktober	November	Dezember		
Tagesmittel	1	414.19	413.97 +	413.77 +	413.43	413.46	413.50 -	413.98 +	413.54 +	413.19 +	412.81	413.11 -	1	
	2	414.20	413.94	413.75	413.44	413.46	413.56	413.98 +	413.53	413.18	412.99	412.80	413.14	2
	3	414.21	413.93	413.74	413.45	413.45	413.63	413.96	413.51	413.17	412.98	412.79 -	413.16	3
	4	414.23	413.93	413.72	413.46 +	413.43	413.70	413.95	413.49	413.16	412.97	412.80	413.18	4
	5	414.25	413.94	413.71	413.45	413.42	413.76	413.95	413.48	413.15	412.96	412.79 -	413.20	5
	6	414.26	413.94	413.71	413.44	413.42	413.81	413.94	413.47	413.13	412.95	412.79 -	413.21	6
	7	414.26	413.93	413.69	413.44	413.41	413.86	413.94	413.46	413.12	412.94	412.80	413.22	7
	8	414.27 +	413.93	413.67	413.44	413.40	413.90	413.93	413.44	413.10	412.93	412.80	413.23	8
	9	414.27 +	413.93	413.66	413.43	413.39	413.92	413.92	413.43	413.09	412.93	412.82	413.24 +	9
	10	414.27 +	413.95	413.65	413.42	413.38 -	413.94	413.92	413.44	413.08	412.92	412.82	413.24 +	10
m ü.M.	11	414.25	413.96	413.64	413.42	413.38 -	413.96	413.90	413.44	413.07	412.91	412.83	413.24 +	11
	12	414.24	413.94	413.63	413.41	413.38 -	413.98	413.89	413.44	413.06	412.90	412.85	413.23	12
	13	414.24	413.93	413.62	413.40	413.40	413.99	413.88	413.43	413.05	412.90	412.86	413.22	13
	14	414.23	413.94	413.61	413.40	413.43	414.00	413.86	413.42	413.04	412.90	412.88	413.21	14
	15	414.22	413.93	413.59	413.41	413.44	414.01	413.85	413.41	413.04	412.90	412.88	413.19	15
	16	414.21	413.93	413.59	413.41	413.45	414.01	413.84	413.40	413.03	412.89	412.89	413.18	16
	17	414.19	413.92	413.58	413.40	413.45	414.02 +	413.82	413.38	413.02	412.88	412.90	413.17	17
	18	414.18	413.92	413.57	413.40	413.45	414.02 +	413.81	413.37	413.03	412.88	412.91	413.16	18
	19	414.18	413.91	413.55	413.39 -	413.44	414.02 +	413.79	413.35	413.02	412.88	412.92	413.15	19
	20	414.16	413.91	413.54	413.40	413.44	414.01	413.78	413.34	413.02	412.87	412.93	413.12	20
+ Maximum	21	414.14	413.90	413.52	413.40	413.45	414.00	413.76	413.33	413.03	412.87	412.94	413.12	21
	22	414.12	413.89	413.52	413.42	413.44	414.00	413.75	413.32	413.03	412.86	412.94	413.11 -	22
	23	414.11	413.87	413.51	413.42	413.45	413.99	413.73	413.31	413.04	412.85	412.96	413.11 -	23
	24	414.09	413.85	413.49	413.43	413.46	413.98	413.71	413.29	413.04	412.85	412.97	413.13	24
	25	414.06	413.83	413.48	413.44	413.46	413.98	413.69	413.28	413.04	412.85	412.98	413.13	25
	26	414.05	413.82	413.47	413.45	413.46	413.98	413.67	413.27	413.03	412.84	413.00	413.13	26
	27	414.04	413.80	413.46	413.45	413.46	413.99	413.64	413.26	413.03	412.83	413.03	413.14	27
	28	414.01	413.79 -	413.44	413.45	413.47 +	413.99	413.62	413.24	413.02	412.83	413.05	413.16	28
	29	413.99		413.43	413.45	413.47 +	413.98	413.59	413.23	413.02	412.82	413.07	413.17	29
	30	413.98		413.42 -	413.46 +	413.47 +	413.98	413.57	413.22	413.01 -	412.81 -	413.09 +	413.19	30
31	413.96 -		413.42 -		413.47 +		413.55 -	413.21 -		412.81 -		413.22	31	
Monatsmittel	414.16 +	413.91	413.59	413.43	413.44	413.92	413.81	413.38	413.07	412.89 -	412.90	413.17	m ü.M.	
Spitze Datum	414.27 + 7.	413.98 1.	413.78 1.	413.46 4.	413.48 28.	414.03 18.	413.98 1.	413.55 1.	413.20 1.	413.00 - 1.	413.10 30.	413.24 9.	m ü.M.	
Amplitude	0.31	0.20	0.36	0.07 -	0.10	0.55 +	0.43	0.35	0.20	0.19	0.32	0.14	m	

Jahr Mittel: 413.47 Spitze: 414.27 (07.01.2013) Minimum: 412.78 (03.11.2013) Amplitude: 1.49



Periode	2002 - 2013 ( 11 Jahre )												
Monatsmittel	413.36	413.18	413.07 -	413.16	413.23	413.40	413.36	413.48	413.53 +	413.47	413.39	413.34	m ü.M.
Monats-Spitze Jahr	414.42 2003	413.98 2013	413.78 2013	413.71 - 2003	414.08 2006	414.20 2006	413.98 2013	414.39 2005	414.37 2005	414.34 2002	414.73 + 2002	414.71 2002	m ü.M.
Monats-Minimum Jahr	412.47 2005	412.39 2005	412.37 2005	412.48 2005	412.37 2011	412.30 - 2011	412.36 2011	412.49 2006	412.86 + 2006	412.81 2013	412.78 2013	412.58 2004	m ü.M.
Monats-Amplitude Jahr	0.52 2003	0.43 2003	0.36 2008	1.10 2006	0.39 2011	0.90 2012	0.82 2011	1.34 + 2005	0.61 2005	0.56 2012	0.62 2007	0.32 - 2007	m ü.M.
Periode	Mittel: 413.34 Spitze: 414.73 (24.11.2002) Minimum: 412.30 (21.06.2011) Amplitude: 2.43												



**Grundwasserstände**

**Nr. 5013 Trubikon - Oberwil Zug**

**KANTON ZUG**

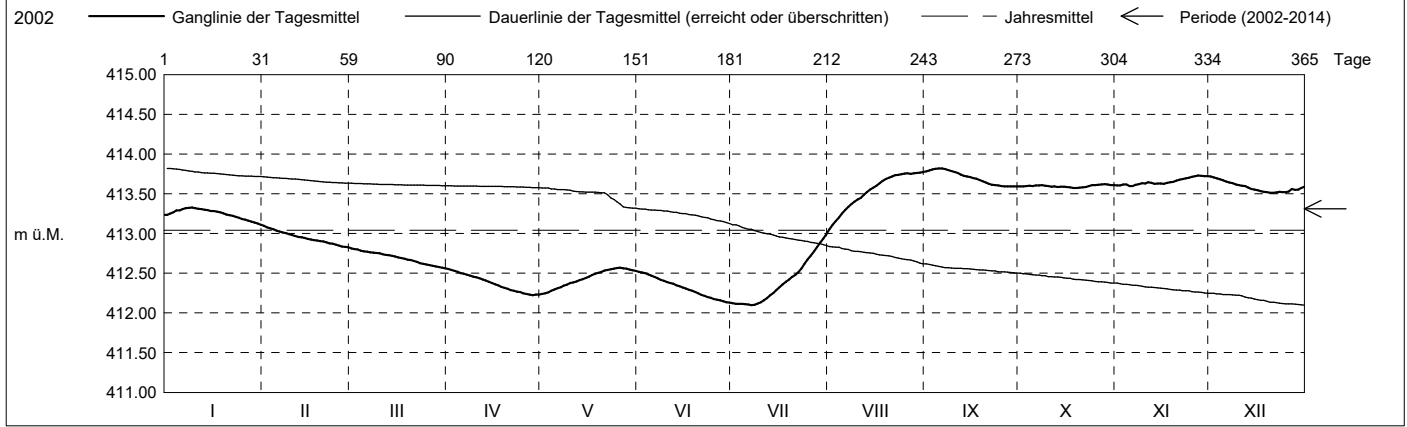
Koordinaten: 2'681'087' / 1'221'704'

Amt für Umwelt

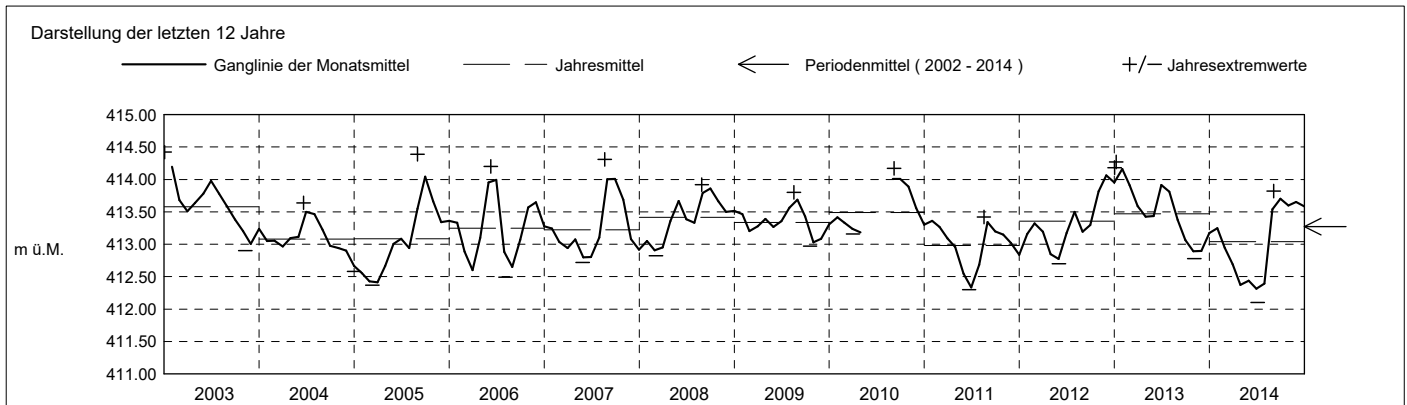
Abstichpunkt: 431.24 m ü.M. OK Terrain: 430.46 m ü.M.

2014	Januar	Februar	März	April	Mai	Juni	Juli	August	September	Oktober	November	Dezember	
Tagesmittel	1 413.24	413.10 +	412.81 +	412.55 +	412.24 -	412.52 +	412.12	413.05 -	413.78	413.59	413.60 -	413.72 +	1
	2 413.25	413.08	412.80	412.54	412.25	412.51	412.11	413.11	413.79	413.59	413.61	413.70	2
	3 413.27	413.07	412.80	412.53	412.26	412.50	412.11	413.16	413.81	413.60	413.62	413.69	3
	4 413.29	413.05	412.78	412.52	412.28	412.49	412.11	413.20	413.81	413.60	413.62	413.68	4
	5 413.29	413.04	412.77	412.50	412.30	412.47	412.11	413.25	413.82 +	413.60	413.60 -	413.67	5
	6 413.31	413.03	412.77	412.49	412.31	412.45	412.11	413.30	413.82 +	413.60	413.60 -	413.65	6
	7 413.32	413.01	412.76	412.48	412.33	412.43	412.10 -	413.33	413.81	413.60	413.61	413.64	7
	8 413.32	413.01	412.76	412.47	412.34	412.42	412.10 -	413.37	413.80	413.61	413.62	413.63	8
	9 413.33 +	412.99	412.75	412.46	412.36	412.40	412.12	413.40	413.79	413.60	413.63	413.62	9
	10 413.32	412.98	412.75	412.45	412.38	412.39	412.13	413.43	413.77	413.60	413.63	413.61	10
	11 413.31	412.97	412.74	412.44	412.39	412.38	412.16	413.45	413.76	413.59	413.64	413.60	11
	12 413.30	412.96	412.73	412.42	412.40	412.37	412.19	413.49	413.74	413.59	413.64	413.60	12
m ü.M.	13 413.30	412.95	412.73	412.41	412.41	412.35	412.22	413.52	413.73	413.59	413.63	413.58	13
	14 413.29	412.94	412.72	412.39	412.42	412.34	412.25	413.55	413.72	413.59	413.63	413.56	14
	15 413.28	412.93	412.71	412.38	412.44	412.32	412.29	413.58	413.71	413.59	413.63	413.55	15
	16 413.28	412.92	412.70	412.36	412.46	412.31	412.32	413.60	413.70	413.58	413.63	413.54	16
	17 413.27	412.92	412.69	412.35	412.48	412.29	412.36	413.63	413.69	413.58	413.64	413.53	17
	18 413.27	412.91	412.68	412.33	412.49	412.28	412.39	413.66	413.67	413.57 -	413.65	413.52	18
	19 413.25	412.90	412.67	412.32	412.51	412.26	412.42	413.69	413.66	413.57 -	413.65	413.52	19
	20 413.24	412.90	412.67	412.30	412.52	412.25	412.45	413.70	413.64	413.58	413.66	413.51 -	20
	21 413.23	412.89	412.65	412.29	412.53	412.23	412.48	413.72	413.63	413.58	413.68	413.51 -	21
	22 413.22	412.88	412.64	412.28	412.54	412.21	412.51	413.73	413.61	413.58	413.69	413.52	22
	23 413.21	412.87	412.63	412.27	412.55	412.20	412.56	413.74	413.61	413.60	413.70	413.52	23
	24 413.20	412.86	412.62	412.26	412.56	412.19	412.62	413.74	413.61	413.61	413.70	413.52	24
+ Maximum	25 413.18	412.85	412.61	412.25	412.57 +	412.17	412.67	413.75	413.60	413.61	413.71	413.52	25
	26 413.17	412.84	412.60	412.24	412.57 +	412.17	412.72	413.76	413.59 -	413.61	413.72	413.53	26
- Minimum	27 413.16	412.83	412.60	412.23	412.56	412.16	412.77	413.75	413.59 -	413.62 +	413.73 +	413.56	27
	28 413.15	412.82 -	412.58	412.22 -	412.56	412.15	412.83	413.76	413.59 -	413.62 +	413.73 +	413.55	28
	29 413.14		412.58	412.23	412.55	412.13 -	412.88	413.76	413.59 -	413.62 +	413.72	413.55	29
	30 413.12		412.57	412.23	412.54	412.13 -	412.94	413.77 +	413.59 -	413.61	413.72	413.57	30
	31 413.11 -		412.56 -	412.23	412.53	412.13 -	413.00 +	413.77 +	413.59 -	413.61	413.72	413.59	31
Monatsmittel	413.25	412.95	412.69	412.37	412.44	412.32 -	412.39	413.54	413.70 +	413.60	413.65	413.58	m ü.M.
Spitze Datum	413.33 8.	413.11 1.	412.82 1.	412.56 1.	412.57 25.	412.52 - 1.	413.03 31.	413.78 31.	413.82 + 4.	413.63 28.	413.73 26.	413.73 1.	m ü.M.
Amplitude	0.23	0.30	0.26	0.34	0.34	0.40	0.93 +	0.75	0.23	0.06 -	0.14	0.22	m

Jahr Mittel: 413.04 Spitze: 413.82 (04.09.2014) Minimum: 412.10 (04.07.2014) Amplitude: 1.72



Periode	2002 - 2014 (12 Jahre)												
Monatsmittel	413.35	413.16	413.04 -	413.09	413.16	413.31	413.28	413.49	413.54 +	413.48	413.41	413.36	m ü.M.
Monats-Spitze Jahr	414.42 2003	413.98 2013	413.78 2013	413.71 - 2003	414.08 2006	414.20 2006	413.98 2013	414.39 2005	414.37 2005	414.34 2002	414.73 + 2002	414.71 2002	m ü.M.
Monats-Minimum Jahr	412.47 2005	412.39 2005	412.37 2005	412.22 2014	412.23 2014	412.12 2014	412.10 - 2014	412.49 2006	412.86 + 2006	412.81 2013	412.78 2013	412.58 2004	m ü.M.
Monats-Amplitude Jahr	0.52 2003	0.43 2003	0.36 2008	1.10 2006	0.39 2011	0.90 2012	0.93 2014	1.34 + 2005	0.61 2005	0.56 2012	0.62 2007	0.32 - 2007	m ü.M.
Periode	Mittel: 413.31 Spitze: 414.73 (24.11.2002) Minimum: 412.10 (04.07.2014) Amplitude: 2.63												



**Grundwasserstände**

**Nr. 5013 Trubikon - Oberwil Zug**

**KANTON ZUG**

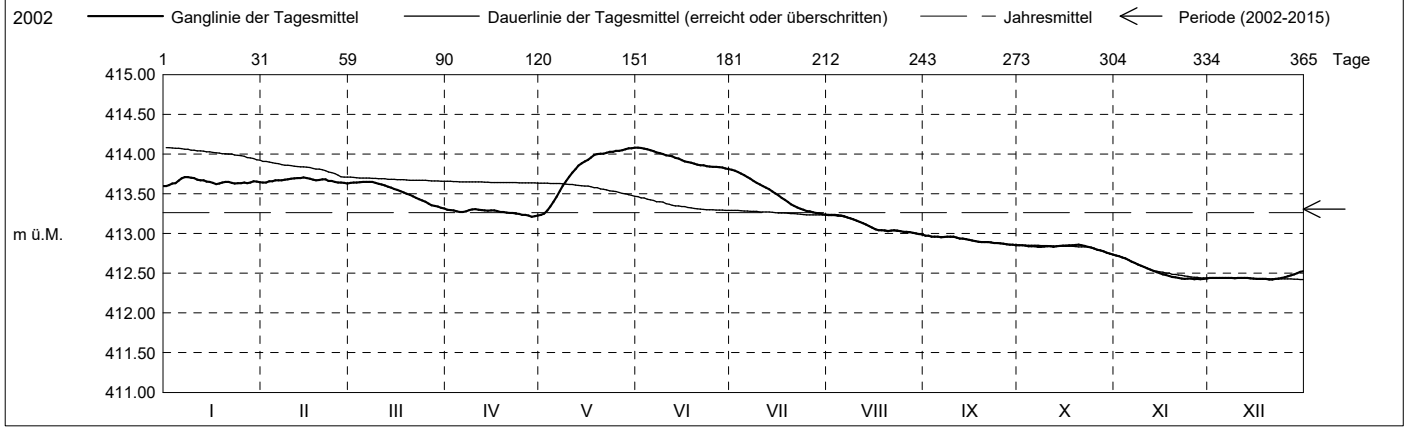
Koordinaten: 2'681'087' / 1'221'704'

Amt für Umwelt

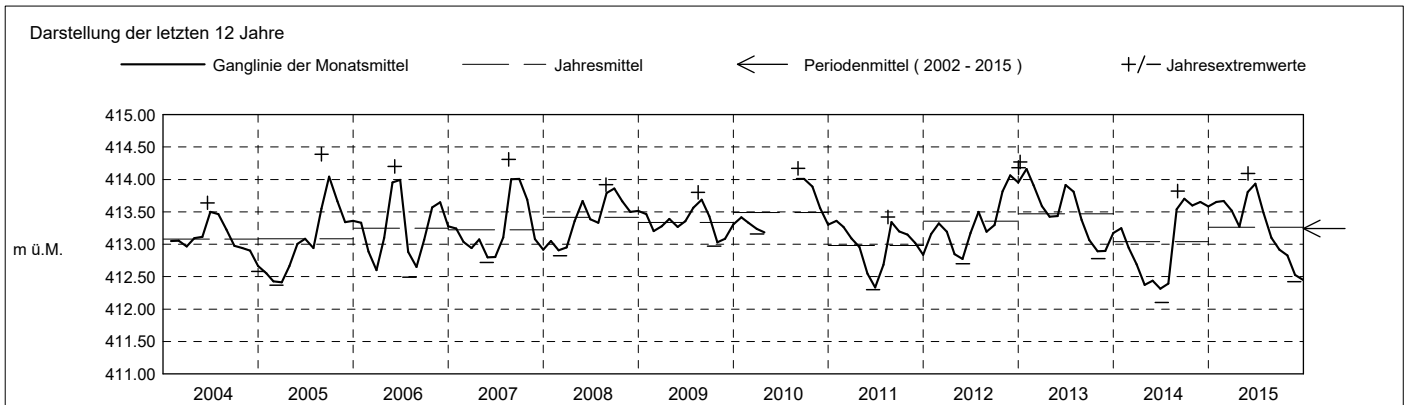
Abstichpunkt: 431.24 m ü.M. OK Terrain: 430.46 m ü.M.

2015	Januar	Februar	März	April	Mai	Juni	Juli	August	September	Oktober	November	Dezember	
Tagesmittel	1 413.60 -	413.64	413.64	413.30	413.24 -	414.08 +	413.80 +	413.23 +	412.97 +	412.85	412.72 +	412.44	1
	2 413.61	413.64	413.64	413.29	413.25	414.08 +	413.79	413.23 +	412.97 +	412.85	412.71	412.44	2
	3 413.63	413.66	413.64	413.29	413.29	414.07	413.78	413.23 +	412.96	412.85	412.70	412.44	3
	4 413.64	413.66	413.65 +	413.28	413.34	414.06	413.76	413.23 +	412.96	412.84	412.68	412.44	4
	5 413.66	413.67	413.65 +	413.27	413.40	414.05	413.73	413.23 +	412.96	412.84	412.67	412.44	5
	6 413.69	413.67	413.65 +	413.27	413.46	414.03	413.71	413.22	412.95	412.84	412.65	412.44	6
	7 413.71 +	413.67	413.65 +	413.28	413.54	414.02	413.69	413.20	412.96	412.83	412.63	412.44	7
	8 413.71 +	413.68	413.65 +	413.29	413.60	414.01	413.66	413.19	412.96	412.83	412.61	412.44	8
	9 413.70	413.68	413.64	413.30	413.66	414.00	413.64	413.18	412.96	412.84	412.59	412.44	9
	10 413.70	413.69	413.62	413.31 +	413.71	413.98	413.82	413.16	412.96	412.84	412.58	412.44	10
m ü.M.	11 413.68	413.69	413.61	413.30	413.77	413.98	413.80	413.15	412.95	412.84	412.56	412.44	11
	12 413.67	413.70 +	413.60	413.29	413.81	413.97	413.58	413.13	412.94	412.83	412.54	412.44	12
	13 413.67	413.70 +	413.59	413.29	413.85	413.95	413.55	413.11	412.94	412.84	412.53	412.44	13
	14 413.65	413.70 +	413.58	413.29	413.88	413.94	413.53	413.10	412.93	412.84	412.51	412.43	14
	15 413.65	413.70 +	413.56	413.29	413.90	413.92	413.50	413.07	412.92	412.85	412.50	412.43	15
	16 413.64	413.69	413.55	413.29	413.93	413.91	413.48	413.05	412.91	412.85	412.49	412.43	16
	17 413.62	413.68	413.53	413.28	413.96	413.90	413.45	413.04	412.90	412.85	412.48	412.43	17
	18 413.63	413.67	413.52	413.27	413.99	413.89	413.42	413.04	412.89	412.85	412.46	412.43	18
	19 413.64	413.67	413.50	413.27	414.00	413.88	413.39	413.04	412.89	412.86 +	412.45	412.43	19
	20 413.65	413.68	413.49	413.26	414.00	413.87	413.37	413.03	412.89	412.86 +	412.45	412.42 -	20
+ Maximum	21 413.65	413.68	413.47	413.26	414.00	413.86	413.35	413.04	412.89	412.85	412.44	412.42 -	21
	22 413.64	413.66	413.45	413.26	414.02	413.86	413.33	413.04	412.89	412.84	412.43	412.43	22
	23 413.63	413.66	413.43	413.25	414.03	413.85	413.31	413.04	412.88	412.83	412.43	412.43	23
	24 413.63	413.65	413.42	413.25	414.03	413.84	413.30	413.03	412.88	412.82	412.43	412.44	24
	25 413.63	413.64	413.40	413.24	414.04	413.84	413.28	413.02	412.88	412.81	412.43	412.45	25
	26 413.64	413.64	413.38	413.23	414.04	413.84	413.28	413.02	412.87	412.80	412.43	412.46	26
	27 413.63	413.64	413.36	413.23	414.05	413.83	413.27	413.02	412.86	412.79	412.43	412.47	27
	28 413.64	413.63 -	413.35	413.21 -	414.06	413.83	413.26	413.01	412.86	412.77	412.42 -	412.49	28
	29 413.66	413.64	413.34	413.22	414.07	413.82	413.25	413.00	412.86	412.76	412.43	412.50	29
	30 413.65	413.64	413.32 -	413.23	414.07	413.81 -	413.24 -	412.99 -	412.85 -	412.75 -	412.43	412.52	30
31 413.65	413.64	413.32 -	413.23	414.08 +	413.81 -	413.24 -	412.99 -	412.85 -	412.73 -	412.43	412.53 +	31	
Monatsmittel	413.65	413.67	413.52	413.27	413.81	413.93 +	413.49	413.10	412.92	412.83	412.53	412.45 -	m ü.M.
Spitze Datum	413.71 7.	413.71 14.	413.65 2.	413.31 1.	414.08 29.	414.09 + 1.	413.81 1.	413.24 1.	412.98 1.	412.86 19.	412.73 1.	412.54 - 31.	m ü.M.
Amplitude	0.12	0.09 -	0.35	0.11	0.85 +	0.28	0.57	0.26	0.13	0.13	0.31	0.12	m

Jahr Mittel: 413.26 Spitze: 414.09 (01.06.2015) Minimum: 412.42 (26.11.2015) Amplitude: 1.67



Periode	2002 - 2015 (13 Jahre)												
Monatsmittel	413.38	413.20	413.08 -	413.11	413.22	413.36	413.29	413.46	413.49 +	413.44	413.34	413.29	m ü.M.
Monats-Spitze Jahr	414.42 2003	413.98 2013	413.78 2013	413.71 - 2003	414.08 2006	414.20 2006	413.98 2013	414.39 2005	414.37 2005	414.34 2002	414.73 + 2002	414.71 2002	m ü.M.
Monats-Minimum Jahr	412.47 2005	412.39 2005	412.37 2005	412.22 2014	412.23 2014	412.12 2014	412.10 - 2014	412.49 2006	412.85 + 2015	412.73 2015	412.42 2015	412.42 2015	m ü.M.
Monats-Amplitude Jahr	0.52 2003	0.43 2003	0.36 2008	1.10 2006	0.85 2015	0.90 2012	0.93 2014	1.34 + 2005	0.61 2005	0.56 2012	0.62 2007	0.32 - 2007	m ü.M.
Periode	Mittel: 413.31 Spitze: 414.73 (24.11.2002) Minimum: 412.10 (04.07.2014) Amplitude: 2.63												



**Grundwasserstände**

**Nr. 5013 Trubikon - Oberwil Zug**

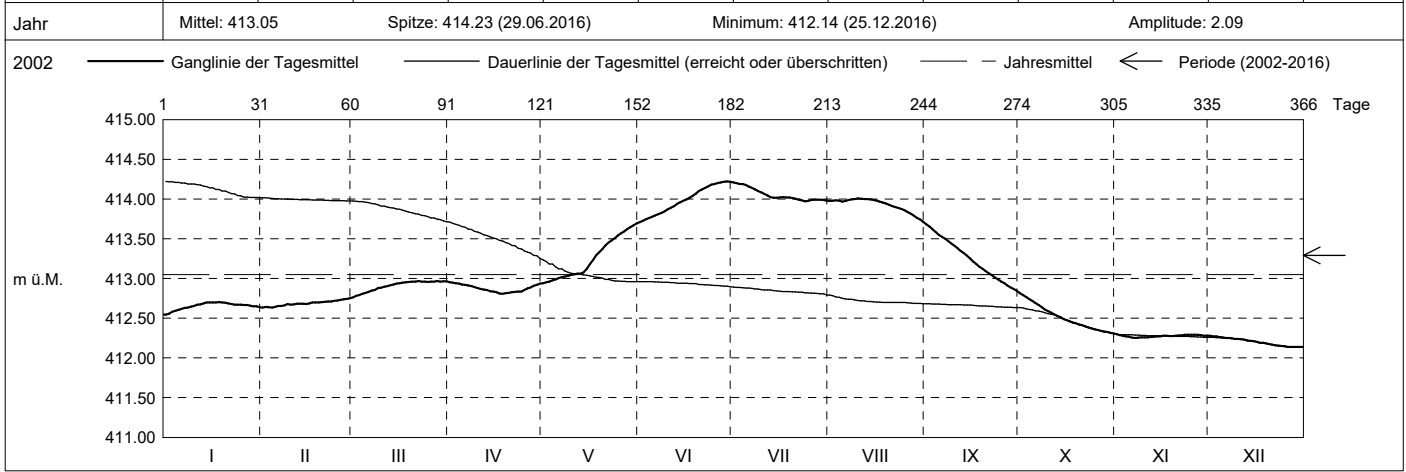
**KANTON ZUG**

Koordinaten: 2'681'087' / 1'221'704'

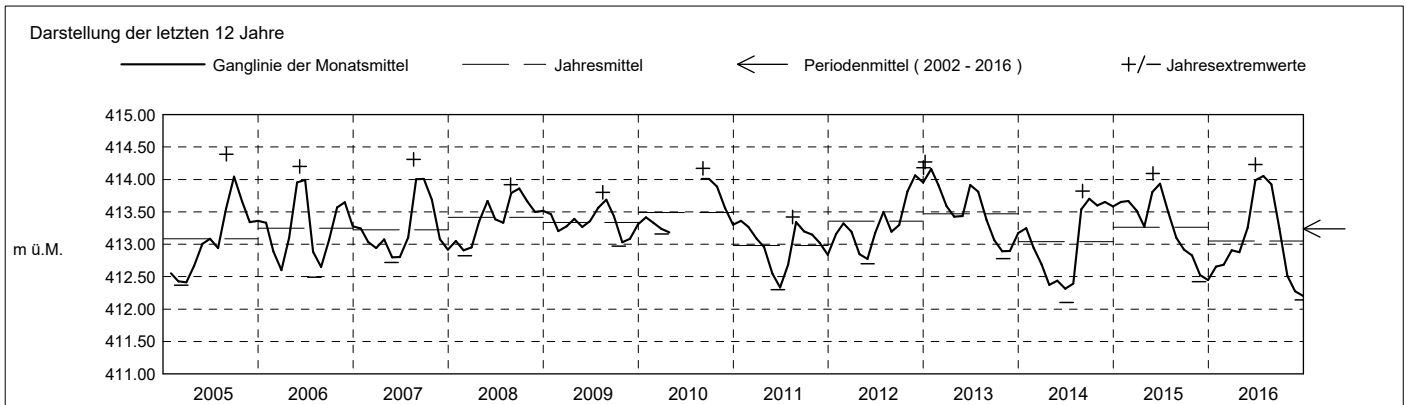
Amt für Umwelt

Abstichpunkt: 431.24 m ü.M. OK Terrain: 430.46 m ü.M.

2016	Januar	Februar	März	April	Mai	Juni	Juli	August	September	Oktober	November	Dezember	
Tagesmittel	1 412.54 -	412.64 -	412.76 -	412.95 +	412.94 -	413.71 -	414.21 +	413.97	413.68 +	412.82 +	412.30 +	412.28 +	1
	2 412.56	412.64 -	412.78	412.95 +	412.95 +	413.73	414.20	413.98	413.65	412.79	412.29	412.27	2
	3 412.58	412.64 -	412.79	412.94	412.96	413.74	414.19	413.98	413.62	412.76	412.28	412.27	3
	4 412.60	412.64 -	412.81	412.94	412.98	413.76	414.19	413.98	413.58	412.74	412.27	412.26	4
	5 412.61	412.64 -	412.82	412.92	412.99	413.78	414.18	413.97	413.55	412.72	412.27	412.26	5
	6 412.62	412.65	412.83	412.92	413.01	413.79	414.16	413.97	413.52	412.69	412.26	412.25	6
	7 412.63	412.65	412.85	412.91	413.02	413.81	414.14	413.99	413.50	412.66	412.25 -	412.25	7
	8 412.64	412.66	412.86	412.90	413.03	413.83	414.12	414.00	413.47	412.64	412.25 -	412.25	8
	9 412.65	412.68	412.88	412.89	413.03	413.85	414.10	414.00	413.44	412.61	412.26	412.24	9
	10 412.66	412.67	412.88	412.88	413.05	413.87	414.08	414.01 +	413.41	412.59	412.26	412.24	10
	11 412.67	412.67	412.89	412.87	413.05	413.89	414.06	414.00	413.38	412.57	412.26	412.23	11
	12 412.67	412.68	412.90	412.86	413.06	413.91	414.04	414.00	413.35	412.55	412.26	412.23	12
	13 412.68	412.68	412.92	412.85	413.06	413.94	414.02	414.00	413.32	412.53	412.27	412.22	13
	14 412.70 +	412.68	412.92	412.84	413.08	413.96	414.02	413.99	413.29	412.51	412.27	412.22	14
m ü.M.	15 412.70 +	412.68	412.94	412.84	413.12	413.98	414.02	413.99	413.25	412.49	412.27	412.21	15
	16 412.70 +	412.69	412.94	412.83	413.18	414.00	414.02	413.98	413.22	412.48	412.28	412.20	16
	17 412.70 +	412.70	412.95	412.81 -	413.23	414.02	414.02	413.97	413.18	412.46	412.28	412.19	17
	18 412.70 +	412.70	412.95	412.81 -	413.29	414.04	414.02	413.96	413.15	412.45	412.27	412.19	18
	19 412.70 +	412.70	412.96	412.81 -	413.33	414.07	414.02	413.94	413.12	412.44	412.27	412.18	19
	20 412.69	412.70	412.96	412.82	413.37	414.10	414.01	413.93	413.09	412.42	412.28	412.17	20
	21 412.69	412.71	412.96	412.83	413.42	414.12	414.00	413.91	413.07	412.41	412.28	412.17	21
	22 412.68	412.71	412.97 +	412.83	413.45	414.14	413.99	413.90	413.04	412.40	412.28	412.16	22
	23 412.67	412.71	412.96	412.84	413.48	414.16	413.98	413.89	413.01	412.38	412.29	412.16	23
	24 412.67	412.72	412.96	412.84	413.51	414.18	413.97 -	413.87	412.99	412.37	412.29	412.15	24
+ Maximum	25 412.67	412.72	412.96	412.85	413.54	414.19	413.98	413.86	412.96	412.36	412.29	412.15	25
	26 412.67	412.73	412.96	412.88	413.57	414.20	413.99	413.84	412.94	412.35	412.29	412.14 -	26
- Minimum	27 412.67	412.74	412.96	412.89	413.59	414.21	413.99	413.82	412.91	412.34	412.29	412.14 -	27
	28 412.66	412.74	412.97 +	412.91	413.62	414.22 +	413.99	413.79	412.89	412.33	412.29	412.14 -	28
	29 412.65	412.75 +	412.96	412.92	413.64	414.22 +	413.99	413.76	412.87	412.33	412.28	412.14 -	29
	30 412.65		412.96	412.93	413.67	414.22 +	413.99	413.74	412.84 -	412.32	412.28	412.14 -	30
	31 412.64		412.96		413.69 +		413.98	413.71 -		412.31 -		412.14 -	31
Monatsmittel	412.65	412.69	412.91	412.87	413.26	413.99	414.05 +	413.93	413.24	412.51	412.28	412.20 -	m ü.M.
Spitze Datum	412.71 18.	412.75 27.	412.97 22.	412.95 1.	413.70 31.	414.23 + 29.	414.21 1.	414.01 9.	413.70 1.	412.83 1.	412.30 1.	412.28 - 1.	m ü.M.
Amplitude	0.18	0.12	0.22	0.15	0.76	0.53	0.24	0.31	0.87 +	0.53	0.05 -	0.14	m
Jahr	Mittel: 413.05		Spitze: 414.23 (29.06.2016)				Minimum: 412.14 (25.12.2016)				Amplitude: 2.09		



Periode	2002 - 2016 (14 Jahre)												
Monatsmittel	413.32	413.17	413.06 -	413.09	413.22	413.41	413.35	413.49 +	413.48	413.37	413.27	413.22	m ü.M.
Monats-Spitze Jahr	414.42 2003	413.98 2013	413.78 2013	413.71 - 2003	414.08 2006	414.23 2016	414.21 2016	414.39 2005	414.37 2005	414.34 2002	414.73 + 2002	414.71 2002	m ü.M.
Monats-Minimum Jahr	412.47 2005	412.39 2005	412.37 2005	412.22 2014	412.23 2014	412.12 2014	412.10 - 2014	412.49 2006	412.83 + 2016	412.30 2016	412.25 2016	412.14 2016	m ü.M.
Monats-Amplitude Jahr	0.52 2003	0.43 2003	0.36 2008	1.10 2006	0.85 2015	0.90 2012	0.93 2014	1.34 + 2005	0.87 2016	0.56 2012	0.62 2007	0.32 - 2007	m ü.M.
Periode	Mittel: 413.29		Spitze: 414.73 (24.11.2002)				Minimum: 412.10 (04.07.2014)				Amplitude: 2.63		



**Grundwasserstände**

**Nr. 5013 Trubikon - Oberwil Zug**

**KANTON ZUG**

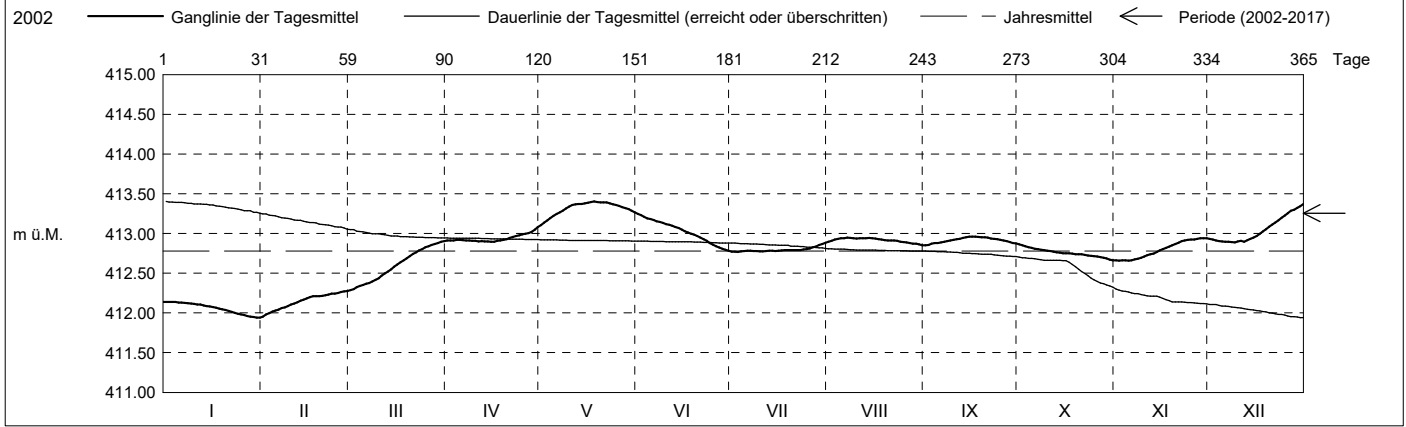
Koordinaten: 2'681'087' / 1'221'704'

Amt für Umwelt

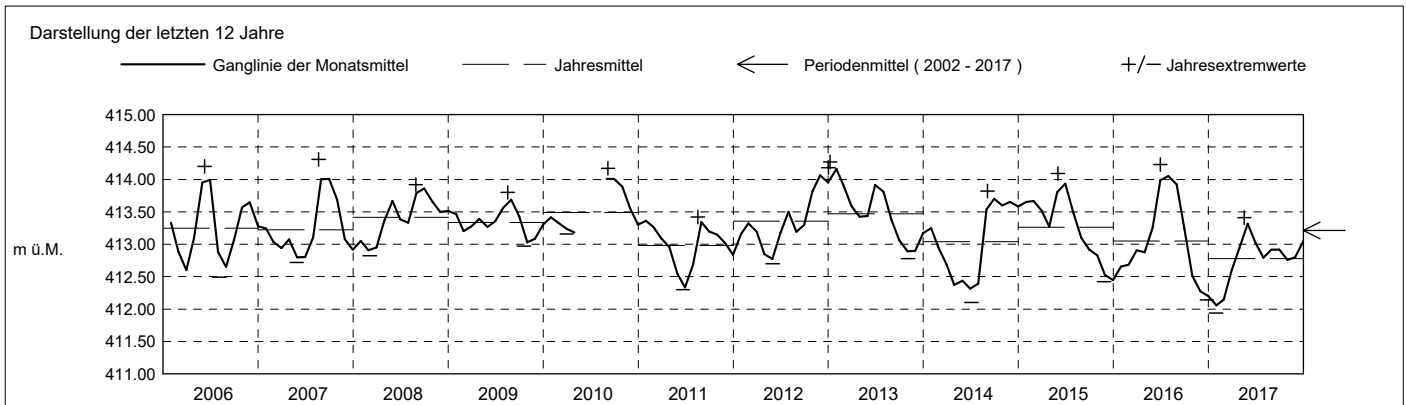
Abstichpunkt: 431.24 m ü.M. OK Terrain: 430.46 m ü.M.

2017	Januar	Februar	März	April	Mai	Juni	Juli	August	September	Oktober	November	Dezember	
Tagesmittel	1 412.14 +	411.96 -	412.29 -	412.91	413.11 -	413.25 +	412.77 -	412.90	412.85 -	412.86 +	412.66 -	412.93	1
	2 412.14 +	411.98	412.30	412.91	413.14	413.23	412.77 -	412.91	412.86	412.85	412.66 -	412.92	2
	3 412.14 +	412.00	412.32	412.91	413.17	413.21	412.77 -	412.92	412.87	412.84	412.66 -	412.91	3
	4 412.14 +	412.02	412.34	412.92	413.19	413.19	412.77 -	412.93	412.88	412.83	412.66 -	412.90	4
	5 412.13	412.03	412.35	412.92	413.22	413.18	412.78	412.94	412.88	412.82	412.66 -	412.90	5
	6 412.13	412.04	412.37	412.92	413.25	413.17	412.78	412.94	412.89	412.81	412.66 -	412.90	6
	7 412.13	412.06	412.38	412.91	413.26	413.15	412.78	412.95 +	412.90	412.80	412.67	412.90	7
	8 412.12	412.07	412.40	412.91	413.29	413.15	412.78	412.94	412.90	412.79	412.68	412.89 -	8
	9 412.12	412.09	412.42	412.91	413.31	413.13	412.78	412.94	412.91	412.79	412.69	412.89 -	9
	10 412.11	412.10	412.44	412.91	413.34	413.12	412.77 -	412.94	412.92	412.78	412.71	412.90	10
m ü.M.	11 412.11	412.12	412.47	412.90 -	413.36	413.11	412.77 -	412.94	412.93	412.78	412.73	412.91	11
	12 412.10	412.14	412.50	412.90 -	413.37	413.10	412.78	412.94	412.93	412.77	412.74	412.90	12
	13 412.09	412.15	412.52	412.90 -	413.37	413.08	412.78	412.94	412.95	412.76	412.75	412.92	13
	14 412.09	412.17	412.55	412.90 -	413.37	413.07	412.78	412.94	412.95	412.76	412.77	412.93	14
	15 412.08	412.18	412.58	412.90 -	413.38	413.05	412.78	412.94	412.96 +	412.75	412.79	412.95	15
	16 412.07	412.20	412.61	412.90 -	413.39	413.03	412.78	412.94	412.96 +	412.75	412.80	412.97	16
	17 412.07	412.21	412.64	412.91	413.40 +	413.01	412.79	412.93	412.96 +	412.75	412.82	412.99	17
	18 412.05	412.21	412.66	412.91	413.40 +	413.00	412.79	412.92	412.96 +	412.74	412.84	413.03	18
	19 412.05	412.21	412.69	412.92	413.39	412.98	412.79	412.92	412.95	412.74	412.85	413.05	19
	20 412.04	412.21	412.71	412.93	413.39	412.97	412.79	412.91	412.95	412.74	412.87	413.09	20
+ Maximum	21 412.03	412.22	412.74	412.94	413.39	412.95	412.79	412.91	412.95	412.74	412.89	413.11	21
	22 412.01	412.23	412.76	412.96	413.39	412.93	412.79	412.91	412.94	412.73	412.90	413.14	22
	23 412.00	412.24	412.79	412.97	413.38	412.91	412.79	412.91	412.93	412.72	412.91	413.17	23
	24 411.99	412.24	412.80	412.98	413.37	412.88	412.80	412.90	412.93	412.72	412.92	413.20	24
	25 411.98	412.25	412.83	412.99	413.36	412.86	412.80	412.89	412.92	412.71	412.92	413.23	25
	26 411.97	412.26	412.84	412.99	413.35	412.84	412.81	412.89	412.91	412.71	412.92	413.26	26
	27 411.96	412.27	412.86	413.01	413.33	412.82	412.83	412.88	412.90	412.70	412.93	413.29	27
	28 411.95	412.28 +	412.87	413.02	413.32	412.81	412.83	412.87	412.89	412.69	412.94 +	413.30	28
	29 411.95		412.88	413.05	413.31	412.79	412.85	412.87	412.88	412.69	412.94 +	413.32	29
	30 411.94 -		412.90 +	413.08 +	413.29	412.78 -	412.87	412.86	412.87	412.67	412.94 +	413.34	30
31 411.94 -		412.90 +	413.27	413.27	412.88 +	412.85 +	412.85 -	412.87	412.66 -	412.94 +	413.37 +	31	
Monatsmittel	412.06 -	412.15	412.60	412.94	413.32 +	413.02	412.80	412.91	412.92	412.76	412.80	413.05	m ü.M.
Spitze Datum	412.14 - 1.	412.29 28.	412.91 31.	413.10 30.	413.41 + 18.	413.25 1.	412.89 31.	412.95 7.	412.96 14.	412.87 1.	412.94 27.	413.38 31.	m ü.M.
Amplitude	0.20	0.35	0.63 +	0.21	0.32	0.47	0.13	0.10 -	0.11	0.21	0.29	0.50	m

Jahr Mittel: 412.78 Spitze: 413.41 (18.05.2017) Minimum: 411.94 (29.01.2017) Amplitude: 1.47



Periode	2002 - 2017 (15 Jahre)												
Monatsmittel	413.24	413.10	413.03 -	413.08	413.23	413.38	413.31	413.45 +	413.44	413.34	413.24	413.21	m ü.M.
Monats-Spitze Jahr	414.42 2003	413.98 2013	413.78 2013	413.71 - 2003	414.08 2006	414.23 2016	414.21 2016	414.39 2005	414.37 2005	414.34 2002	414.73 + 2002	414.71 2002	m ü.M.
Monats-Minimum Jahr	411.94 - 2017	411.94 - 2017	412.28 2017	412.22 2014	412.23 2014	412.12 2014	412.10 2014	412.49 2006	412.83 + 2016	412.30 2016	412.25 2016	412.14 2016	m ü.M.
Monats-Amplitude Jahr	0.52 2003	0.43 - 2003	0.63 2017	1.10 2006	0.85 2015	0.90 2012	0.93 2014	1.34 + 2005	0.87 2016	0.56 2012	0.62 2007	0.50 2017	m ü.M.
Periode	Mittel: 413.26 Spitze: 414.73 (24.11.2002) Minimum: 411.94 (29.01.2017) Amplitude: 2.79												





**Grundwasserstände**

**Nr. 5013 Trubikon - Oberwil Zug**

**KANTON ZUG**

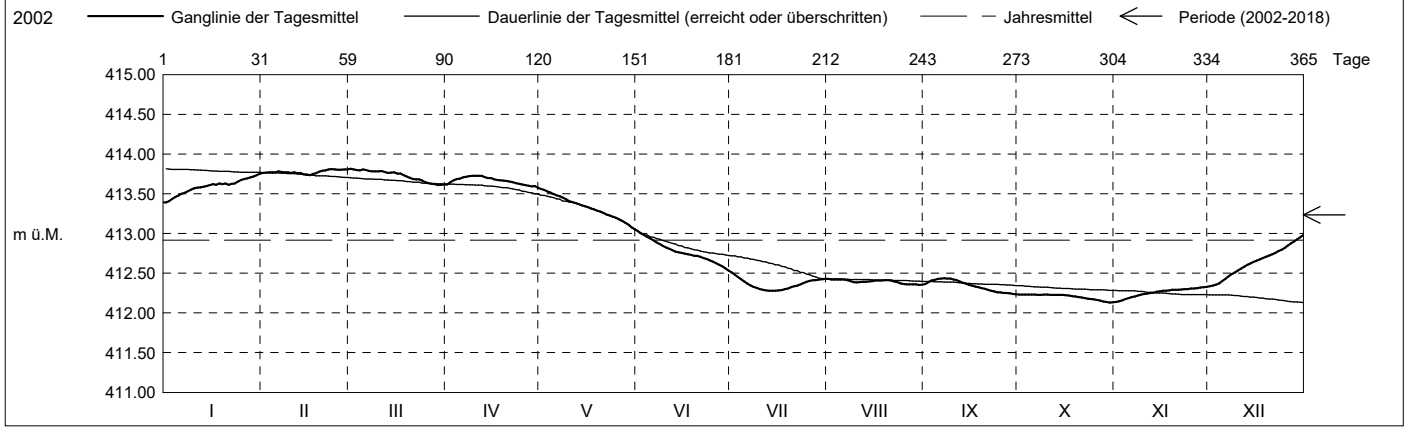
Koordinaten: 2'681'087' / 1'221'704'

Amt für Umwelt

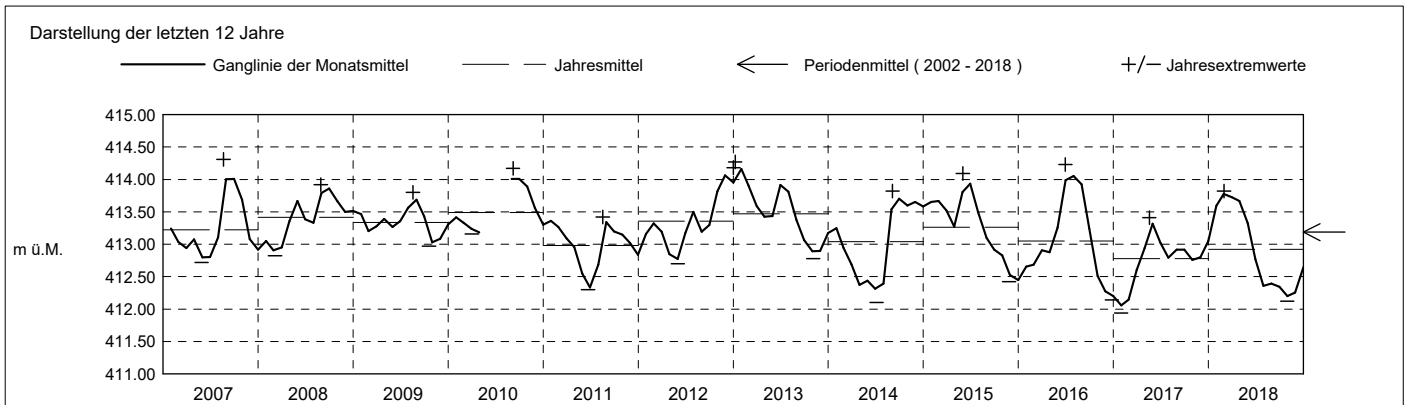
Abstichpunkt: 431.24 m ü.M. OK Terrain: 430.46 m ü.M.

2018	Januar	Februar	März	April	Mai	Juni	Juli	August	September	Oktober	November	Dezember	
Tagesmittel	1 413.39 -	413.76	413.81 +	413.62	413.56 +	413.03 +	412.51 +	412.43 +	412.36	412.23 +	412.14 -	412.33 -	1
	2 413.41	413.77	413.81 +	413.65	413.55	413.00	412.48	412.42	412.39	412.23 +	412.15	412.34	2
	3 413.44	413.77	413.80	413.67	413.53	412.98	412.45	412.42	412.41	412.23 +	412.16	412.35	3
	4 413.46	413.77	413.79	413.68	413.52	412.96	412.42	412.42	412.42	412.23 +	412.18	412.37	4
	5 413.48	413.77	413.81 +	413.69	413.50	412.93	412.40	412.42	412.43 +	412.23 +	412.19	412.40	5
	6 413.50	413.78	413.80	413.71	413.48	412.91	412.37	412.42	412.43 +	412.23 +	412.20	412.43	6
	7 413.51	413.77	413.79	413.71	413.47	412.89	412.35	412.41	412.43 +	412.23 +	412.21	412.46	7
	8 413.53	413.77	413.78	413.72	413.45	412.87	412.33	412.40	412.43 +	412.23 +	412.22	412.49	8
	9 413.55	413.77	413.78	413.73 +	413.43	412.84	412.32	412.39	412.43 +	412.23 +	412.23	412.51	9
	10 413.67	413.76	413.78	413.73 +	413.41	412.82	412.30	412.38	412.42	412.23 +	412.24	412.53	10
m ü.M.	11 413.58	413.77	413.79	413.73 +	413.40	412.81	412.29	412.39	412.41	412.23 +	412.24	412.56	11
	12 413.58	413.76	413.77	413.73 +	413.38	412.79	412.28 -	412.39	412.40	412.23 +	412.25	412.58	12
	13 413.59	413.76	413.76	413.71	413.37	412.77	412.28 -	412.39	412.38	412.23 +	412.26	412.61	13
	14 413.60	413.75	413.77	413.70	413.36	412.76	412.28 -	412.40	412.37	412.23 +	412.27	412.62	14
	15 413.61	413.74	413.77	413.70	413.34	412.76	412.28 -	412.40	412.35	412.23 +	412.27	412.64	15
	16 413.62	413.73 -	413.76	413.68	413.33	412.75	412.28 -	412.41	412.34	412.22	412.28	412.66	16
	17 413.61	413.75	413.76	413.67	413.31	412.74	412.29	412.41	412.33	412.22	412.28	412.67	17
	18 413.63	413.76	413.73	413.67	413.30	412.73	412.30	412.41	412.33	412.21	412.29	412.69	18
	19 413.62	413.78	413.72	413.67	413.29	412.72	412.31	412.41	412.31	412.21	412.29	412.71	19
	20 413.63	413.79	413.70	413.66	413.27	412.72	412.32	412.41	412.30	412.20	412.29	412.72	20
+ Maximum	21 413.61	413.80	413.68	413.65	413.26	412.71	412.33	412.41	412.29	412.19	412.29	412.74	21
	22 413.62	413.80	413.68	413.65	413.24	412.69	412.35	412.40	412.28	412.19	412.29	412.76	22
	23 413.63	413.81 +	413.68	413.63	413.23	412.68	412.36	412.39	412.27	412.18	412.30	412.78	23
	24 413.65	413.81 +	413.67	413.62	413.21	412.66	412.38	412.37	412.26	412.17	412.30	412.80	24
	25 413.67	413.80	413.65	413.62	413.20	412.65	412.39	412.36	412.26	412.17	412.31	412.82	25
	26 413.69	413.80	413.63	413.61	413.18	412.63	412.40	412.36	412.25	412.16	412.31	412.85	26
	27 413.69	413.81 +	413.62	413.60	413.16	412.61	412.41	412.36	412.25	412.15	412.31	412.88	27
	28 413.71	413.80	413.62	413.59	413.13	412.58	412.41	412.36	412.25	412.14	412.32	412.90	28
	29 413.72		413.61 -	413.60	413.11	412.56	412.42	412.36	412.24 -	412.14	412.32	412.93	29
	30 413.73		413.61 -	413.58 -	413.08	412.53 -	412.43	412.35 -	412.24 -	412.13 -	412.33 +	412.95	30
31 413.75 +		413.62		413.05 -		412.43	412.36		412.14		412.98 +	31	
Monatsmittel	413.59	413.78 +	413.73	413.67	413.32	412.77	412.36	412.39	412.34	412.20 -	412.26	412.65	m ü.M.
Spitze Datum	413.76 31.	413.81 22.	413.82 + 1.	413.74 10.	413.57 1.	413.04 1.	412.52 1.	412.43 1.	412.44 6.	412.24 - 5.	412.33 29.	413.00 31.	m ü.M.
Amplitude	0.39	0.08 -	0.21	0.17	0.53	0.52	0.25	0.08 -	0.21	0.12	0.19	0.67 +	m

Jahr Mittel: 412.92 Spitze: 413.82 (01.03.2018) Minimum: 412.12 (30.10.2018) Amplitude: 1.70



Periode	2002 - 2018 ( 16 Jahre )												
Monatsmittel	413.26	413.14	413.08 -	413.12	413.23	413.34	413.25	413.39 +	413.38	413.27	413.18	413.18	m ü.M.
Monats-Spitze Jahr	414.42 2003	413.98 2013	413.82 2018	413.74 - 2018	414.08 2006	414.23 2016	414.21 2016	414.39 2005	414.37 2005	414.34 2002	414.73 + 2002	414.71 2002	m ü.M.
Monats-Minimum Jahr	411.94 - 2017	411.94 - 2017	412.28 2017	412.22 2014	412.23 2014	412.12 2014	412.10 2014	412.35 + 2018	412.23 2018	412.12 2018	412.14 2018	412.14 2016	m ü.M.
Monats-Amplitude Jahr	0.52 2003	0.43 - 2003	0.63 2017	1.10 2006	0.85 2015	0.90 2012	0.93 2014	1.34 + 2005	0.87 2016	0.56 2012	0.62 2007	0.67 2019	m ü.M.
Periode	Mittel: 413.24 Spitze: 414.73 (24.11.2002) Minimum: 411.94 (29.01.2017) Amplitude: 2.79												



**Grundwasserstände**

**Nr. 5013 Trubikon - Oberwil Zug**

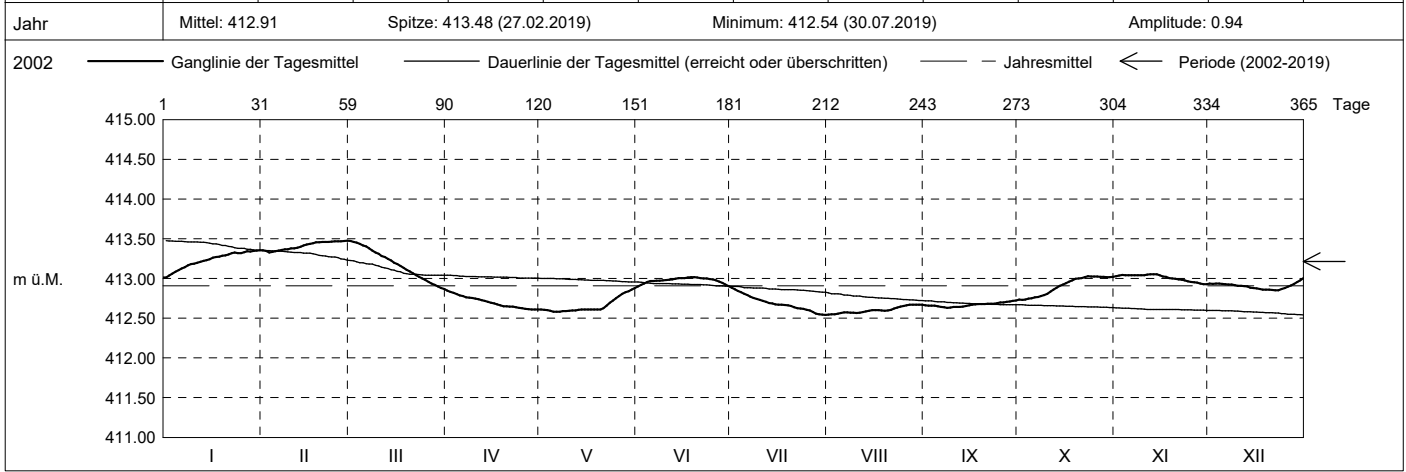
**KANTON ZUG**

Koordinaten: 2'681'087' / 1'221'704'

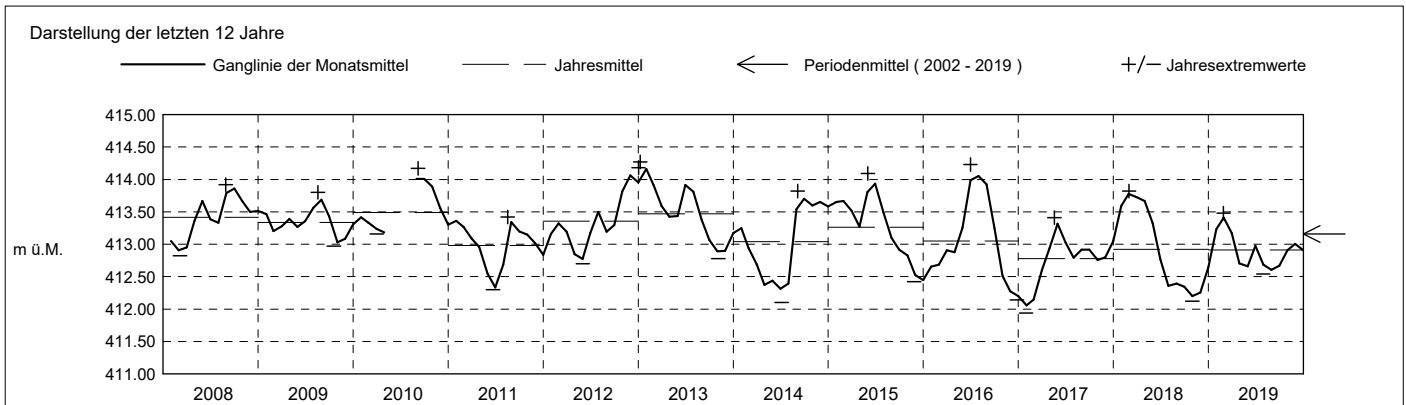
Amt für Umwelt

Abstichpunkt: 431.24 m ü.M. OK Terrain: 430.46 m ü.M.

2019	Januar	Februar	März	April	Mai	Juni	Juli	August	September	Oktober	November	Dezember																																				
Tagesmittel	1 413.01 -	413.36	413.47 +	412.85 +	412.61	412.90 -	412.88 +	412.54 -	412.66	412.73 -	413.03	412.94	1																																			
	2 413.04	413.35	413.46	412.83	412.60	412.92	412.86	412.55	412.66	412.73 -	413.04	412.93	2																																			
	3 413.06	413.33 -	413.45	412.82	412.60	412.94	412.84	412.55	412.66	412.73 -	413.04	412.94	3																																			
	4 413.08	413.33 -	413.44	412.80	412.59	412.95	412.83	412.56	412.66	412.74	413.04	412.94	4																																			
	5 413.11	413.34	413.41	412.79	412.58 -	412.97	412.81	412.57	412.65	412.75	413.04	412.93	5																																			
	6 413.13	413.35	413.40	412.78	412.58 -	412.97	412.79	412.57	412.64	412.76	413.04	412.93	6																																			
	7 413.14	413.36	413.38	412.76	412.58 -	412.97	412.77	412.57	412.64	412.77	413.04	412.92	7																																			
	8 413.17	413.36	413.35	412.76	412.59	412.97	412.75	412.57	412.63 -	412.78	413.04	412.92	8																																			
	9 413.18	413.37	413.33	412.75	412.59	412.98	412.74	412.57	412.64	412.79	413.04	412.92	9																																			
	10 413.19	413.38	413.31	412.75	412.59	412.98	412.73	412.57	412.64	412.81	413.04	412.91	10																																			
m ü.M.	11 413.20	413.38	413.28	412.74	412.60	412.98	412.72	412.57	412.64	412.83	413.05 +	412.91	11																																			
	12 413.21	413.39	413.27	412.73	412.60	412.99	412.71	412.58	412.64	412.86	413.05 +	412.90	12																																			
	13 413.22	413.40	413.25	412.72	412.60	413.00	412.69	412.58	412.65	412.88	413.05 +	412.90	13																																			
	14 413.23	413.42	413.23	412.71	412.61	413.01	412.69	412.60	412.65	412.91	413.05 +	412.89	14																																			
	15 413.24	413.43	413.20	412.70	412.61	413.01	412.67	412.60	412.66	412.92	413.04	412.88	15																																			
	16 413.26	413.44	413.18	412.68	412.61	413.01	412.67	412.60	412.67	412.94	413.02	412.87	16																																			
	17 413.27	413.45	413.16	412.67	412.61	413.01	412.67	412.60	412.67	412.96	413.02	412.87	17																																			
	18 413.28	413.45	413.13	412.66	412.61	413.02 +	412.67	412.60	412.68	412.98	413.01	412.86	18																																			
	19 413.29	413.46	413.11	412.65	412.61	413.02 +	412.66	412.60	412.68	413.00	413.00	412.86	19																																			
	20 413.29	413.46	413.09	412.65	412.61	413.01	412.65	412.60	412.68	413.00	413.00	412.86	20																																			
+ Maximum	21 413.30	413.46	413.07	412.65	412.62	413.00	412.64	412.61	412.68	413.01	412.99	412.85 -	21																																			
	22 413.32	413.46	413.04	412.64	412.66	413.00	412.63	412.62	412.68	413.02	412.98	412.85 -	22																																			
	23 413.33	413.46	413.02	412.64	412.69	413.00	412.62	412.63	412.68	413.03 +	412.98	412.85 -	23																																			
	24 413.32	413.47	413.00	412.63	412.72	412.99	412.62	412.65	412.69	413.02	412.96	412.87	24																																			
	25 413.32	413.47	412.98	412.62	412.75	412.99	412.61	412.65	412.70	413.03 +	412.96	412.88	25																																			
	26 413.33	413.47	412.96	412.62	412.78	412.98	412.60	412.66	412.70	413.02	412.95	412.89	26																																			
	27 413.34	413.47	412.94	412.61 -	412.80	412.96	412.58	412.67 +	412.71	413.02	412.95	412.91	27																																			
	28 413.34	413.48 +	412.92	412.61 -	412.83	412.95	412.56	412.67 +	412.71	413.02	412.94	412.93	28																																			
	29 413.35 +		412.90	412.61 -	412.84	412.92	412.55	412.67 +	412.72 +	413.02	412.93 -	412.96	29																																			
	30 413.35 +		412.88	412.61 -	412.86	412.90 -	412.55	412.67 +	412.72 +	413.02	412.93 -	412.98	30																																			
31 413.35 +		412.87 -		412.88 +		412.54 -	412.67 +		413.02		413.00 +	31																																				
Monatsmittel	413.23	413.41 +	413.18	412.70	412.66	412.98	412.69	412.60 -	412.67	412.91	413.01	412.90	m ü.M.																																			
Spitze Datum	413.36 29.	413.48 + 27.	413.48 + 1.	412.85 1.	412.89 31.	413.02 17.	412.89 1.	412.68 - 29.	412.73 30.	413.03 23.	413.06 12.	413.01 31.	m ü.M.																																			
Amplitude	0.36	0.16	0.62 +	0.24	0.32	0.13	0.35	0.14	0.10 -	0.30	0.14	0.17	m																																			
Jahr	Mittel: 412.91												Spitze: 413.48 (27.02.2019)												Minimum: 412.54 (30.07.2019)												Amplitude: 0.94											



Periode	2002 - 2019 (17 Jahre)																																															
Monatsmittel	413.26	413.16	413.08 -	413.09	413.20	413.32	413.22	413.34 +	413.34 +	413.25	413.17	413.16	m ü.M.																																			
Monats-Spitze Jahr	414.42 2003	413.98 2013	413.82 2018	413.74 - 2018	414.08 2006	414.23 2016	414.21 2016	414.39 2005	414.37 2005	414.34 2002	414.73 + 2002	414.71 2002	m ü.M.																																			
Monats-Minimum Jahr	411.94 - 2017	411.94 - 2017	412.28 2017	412.22 2014	412.23 2014	412.12 2014	412.10 2014	412.35 + 2018	412.23 2018	412.12 2018	412.14 2018	412.14 2016	m ü.M.																																			
Monats-Amplitude Jahr	0.52 2003	0.43 - 2003	0.63 2017	1.10 2006	0.85 2015	0.90 2012	0.93 2014	1.34 + 2005	0.87 2016	0.56 2012	0.62 2007	0.67 2019	m ü.M.																																			
Periode	Mittel: 413.22												Spitze: 414.73 (24.11.2002)												Minimum: 411.94 (29.01.2017)												Amplitude: 2.79											



**Grundwasserstände**

**Nr. 5013 Trubikon - Oberwil Zug**

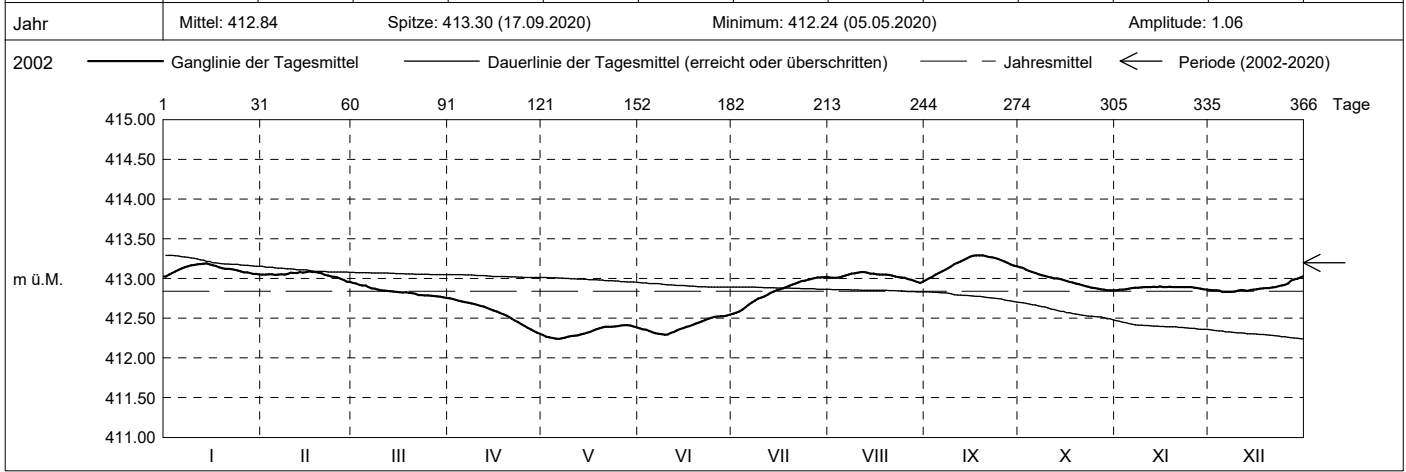
**KANTON ZUG**

Koordinaten: 2'681'087' / 1'221'704'

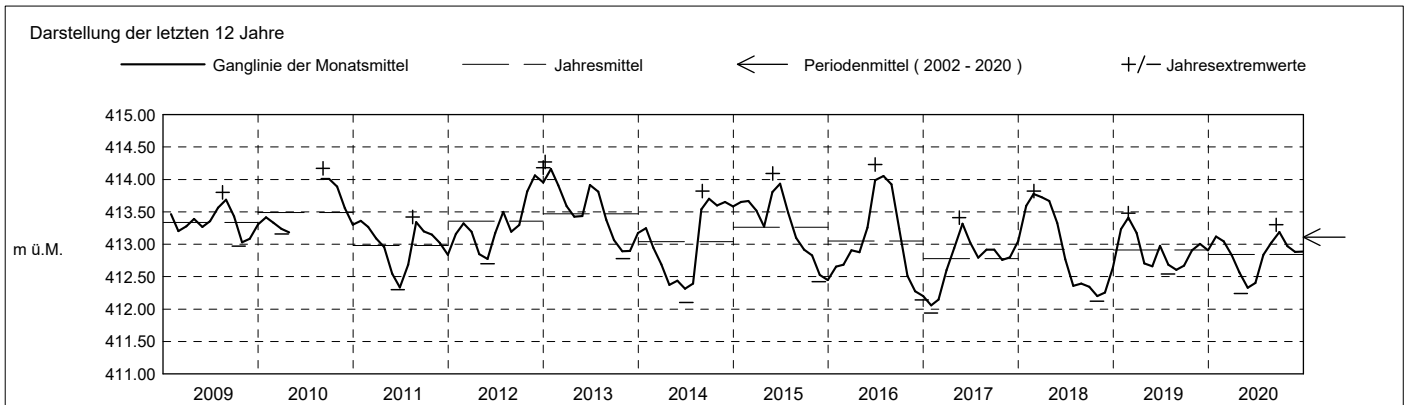
Amt für Umwelt

Abstichpunkt: 431.24 m ü.M. OK Terrain: 430.46 m ü.M.

2020	Januar	Februar	März	April	Mai	Juni	Juli	August	September	Oktober	November	Dezember	
Tagesmittel	1 413.03 -	413.05	412.94 +	412.75 +	412.29	412.37	412.56 -	413.01	412.98 -	413.14 +	412.85 -	412.86	1
	2 413.05	413.05	412.94 +	412.74	412.27	412.36	412.57	413.01	413.01	413.13	412.86	412.85	2
	3 413.07	413.05	412.92	412.73	412.26	412.35	412.59	413.01	413.02	413.11	412.86	412.85	3
	4 413.09	413.05	412.91	412.72	412.25	412.34	412.61	413.01	413.05	413.09	412.86	412.85	4
	5 413.11	413.04	412.91	412.71	412.24 -	412.32	412.64	413.03	413.07	413.08	412.87	412.83 -	5
	6 413.13	413.05	412.89	412.70	412.24 -	412.31	412.67	413.04	413.09	413.07	412.88	412.83 -	6
	7 413.14	413.05	412.88	412.69	412.25	412.30	412.70	413.05	413.11	413.05	412.88	412.83 -	7
	8 413.15	413.05	412.87	412.69	412.26	412.30	412.72	413.06	413.13	413.04	412.88	412.83 -	8
	9 413.17	413.06	412.86	412.68	412.27	412.29 -	412.75	413.07	413.15	413.03	412.89	412.83 -	9
	10 413.17	413.07	412.85	412.67	412.28	412.29 -	412.76	413.07	413.18	413.02	412.89	412.85	10
m ü.M.	11 413.18	413.07	412.85	412.66	412.28	412.31	412.77	413.08 +	413.20	413.01	412.89	412.86	11
	12 413.18	413.07	412.84	412.65	412.28	412.33	412.80	413.08 +	413.22	413.00	412.89	412.85	12
	13 413.19 +	413.08	412.84	412.63	412.30	412.35	412.82	413.07	413.23	413.00	412.89	412.85	13
	14 413.19 +	413.08	412.83	412.61	412.30	412.36	412.84	413.06	413.25	412.99	412.89	412.85	14
	15 413.18	413.08	412.83	412.60	412.32	412.38	412.85	413.06	413.27	412.98	412.90 +	412.86	15
	16 413.17	413.09 +	412.83	412.59	412.33	412.39	412.86	413.05	413.29 +	412.97	412.89	412.86	16
	17 413.16	413.08	412.82	412.57	412.34	412.40	412.88	413.05	413.29 +	412.96	412.89	412.87	17
	18 413.14	413.08	412.83	412.55	412.36	412.42	412.89	413.05	413.29 +	412.95	412.90 +	412.87	18
	19 413.13	413.07	412.82	412.54	412.37	412.43	412.91	413.05	413.29 +	412.94	412.89	412.88	19
	20 413.12	413.07	412.81	412.52	412.38	412.45	412.92	413.04	413.28	412.93	412.89	412.88	20
+ Maximum	21 413.12	413.05	412.81	412.49	412.39	412.46	412.94	413.04	413.27	412.92	412.89	412.89	21
	22 413.12	413.04	412.79	412.47	412.39	412.48	412.95	413.02	413.27	412.90	412.89	412.89	22
	23 413.11	413.03	412.79	412.45	412.39	412.49	412.97	413.02	413.26	412.90	412.89	412.90	23
	24 413.10	413.02	412.79	412.43	412.40	412.51	412.97	413.01	413.25	412.89	412.89	412.91	24
	25 413.09	413.01	412.79	412.40	412.40	412.52	412.98	413.01	413.23	412.88	412.89	412.92	25
	26 413.08	412.99	412.78	412.38	412.41 +	412.52	412.99	413.21	412.87	412.87	412.88	412.94	26
	27 413.08	412.98	412.78	412.36	412.41 +	412.53	413.00	413.20	412.86	412.86	412.88	412.97	27
	28 413.07	412.96 -	412.77	412.34	412.41 +	412.53	413.01	412.97	413.18	412.86	412.87	412.99	28
	29 413.06	412.96 -	412.77	412.32	412.41 +	412.53	413.01	412.96	413.16	412.85 -	412.86	412.99	29
	30 413.06		412.76	412.30 -	412.40	412.55 +	413.02 +	412.94 -	413.15	412.85 -	412.86	413.01	30
31 413.05		412.75 -	412.38	412.38		413.02 +	412.96		412.85 -		413.03 +	31	
Monatsmittel	413.12	413.05	412.83	412.56	412.33 -	412.41	412.84	413.03	413.19 +	412.97	412.88	412.89	m ü.M.
Spitze Datum	413.19 13.	413.09 13.	412.95 1.	412.75 1.	412.41 - 26.	412.55 30.	413.02 29.	413.08 10.	413.30 + 17.	413.15 1.	412.90 12.	413.04 31.	m ü.M.
Amplitude	0.17	0.15	0.20	0.46	0.17	0.26	0.47 +	0.15	0.33	0.30	0.05 -	0.21	m
Jahr	Mittel: 412.84      Spitze: 413.30 (17.09.2020)      Minimum: 412.24 (05.05.2020)      Amplitude: 1.06												



Periode	2002 - 2020 ( 18 Jahre )												
Monatsmittel	413.25	413.15	413.07	413.06 -	413.15	413.27	413.20	413.32	413.33 +	413.23	413.16	413.15	m ü.M.
Monats-Spitze Jahr	414.42 2003	413.98 2013	413.82 2018	413.74 - 2018	414.08 2006	414.23 2016	414.21 2016	414.39 2005	414.37 2005	414.34 2002	414.73 + 2002	414.71 2002	m ü.M.
Monats-Minimum Jahr	411.94 - 2017	411.94 - 2017	412.28 2017	412.22 2014	412.23 2014	412.12 2014	412.10 2014	412.35 + 2018	412.23 2018	412.12 2018	412.14 2018	412.14 2016	m ü.M.
Monats-Amplitude Jahr	0.52 2003	0.43 - 2003	0.63 2017	1.10 2006	0.85 2015	0.90 2012	0.93 2014	1.34 + 2005	0.87 2016	0.56 2012	0.62 2007	0.67 2019	m ü.M.
Periode	Mittel: 413.20      Spitze: 414.73 (24.11.2002)      Minimum: 411.94 (29.01.2017)      Amplitude: 2.79												



**Grundwasserstände**

**Nr. 5013 Trubikon - Oberwil Zug**

**KANTON ZUG**

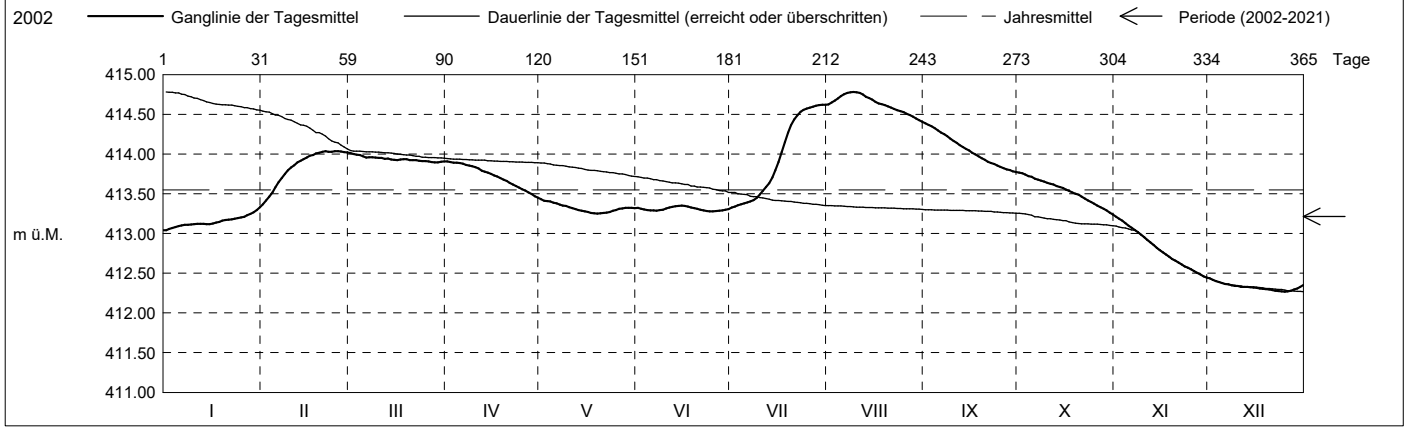
Koordinaten: 2'681'087' / 1'221'704'

Amt für Umwelt

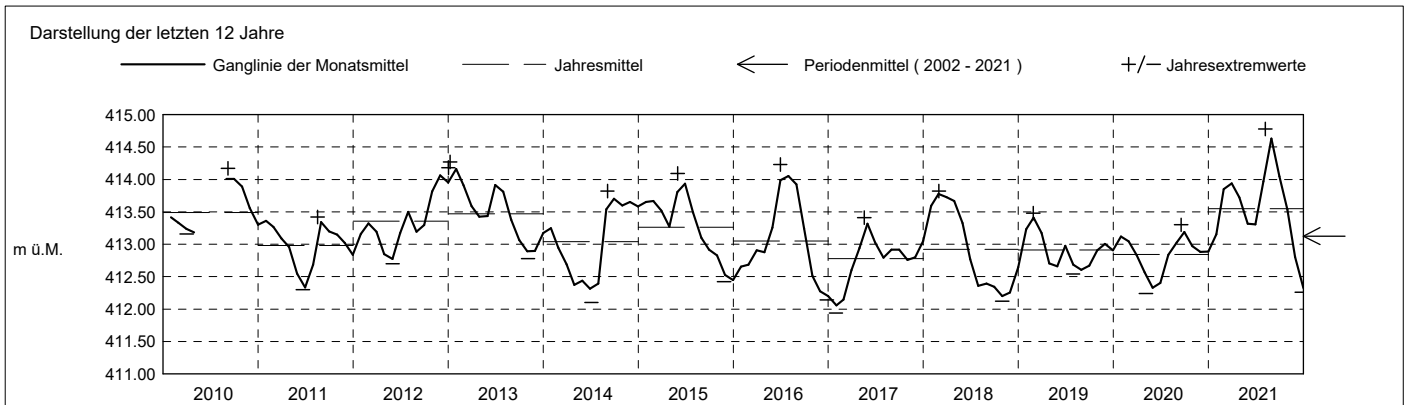
Abstichpunkt: 431.24 m ü.M. OK Terrain: 430.46 m ü.M.

2021	Januar	Februar	März	April	Mai	Juni	Juli	August	September	Oktober	November	Dezember		
Tagesmittel	1	413.04 -	413.37 -	414.01 +	413.90 +	413.43 +	413.32	413.33 -	414.63	414.39 +	413.77 +	413.21 +	412.43 +	1
	2	413.06	413.41	414.00	413.90 +	413.41	413.31	413.34	414.65	414.37	413.76	413.19	412.42	2
	3	413.07	413.46	413.99	413.89	413.41	413.30	413.35	414.67	414.35	413.74	413.16	412.40	3
	4	413.08	413.52	413.99	413.89	413.40	413.30	413.37	414.70	414.32	413.72	413.13	412.39	4
	5	413.09	413.58	413.97	413.89	413.39	413.29	413.38	414.73	414.30	413.71	413.10	412.38	5
	6	413.10	413.64	413.96	413.88	413.38	413.29	413.39	414.76	414.27	413.69	413.07	412.36	6
	7	413.11	413.70	413.96	413.86	413.36	413.29	413.40	414.77	414.25	413.68	413.05	412.36	7
	8	413.11	413.75	413.96	413.86	413.35	413.29	413.42	414.78 +	414.22	413.67	413.02	412.35	8
	9	413.11	413.79	413.95	413.85	413.35	413.30	413.45	414.78 +	414.20	413.65	412.98	412.34	9
	10	413.12	413.83	413.95	413.84	413.33	413.32	413.49	414.78 +	414.17	413.64	412.95	412.34	10
m ü.M.	11	413.12	413.86	413.95	413.82	413.32	413.33	413.54	414.77	414.14	413.63	412.92	412.33	11
	12	413.12	413.89	413.94	413.79	413.31	413.33	413.58	414.75	414.11	413.62	412.89	412.33	12
	13	413.12	413.91	413.94	413.78	413.30	413.34	413.63	414.72	414.09	413.60	412.85	412.33	13
	14	413.12	413.93	413.93	413.77	413.29	413.35 +	413.71	414.70	414.06	413.58	412.82	412.32	14
	15	413.12	413.96	413.93	413.75	413.28	413.35 +	413.79	414.68	414.04	413.57	412.79	412.32	15
	16	413.13	413.98	413.92	413.73	413.27	413.35 +	413.90	414.66	414.02	413.55	412.76	412.31	16
	17	413.14	413.99	413.93	413.72	413.26	413.34	414.02	414.64	413.99	413.54	412.73	412.31	17
	18	413.15	414.01	413.93	413.70	413.26	413.33	414.15	414.63	413.97	413.52	412.70	412.30	18
	19	413.16	414.02	413.94	413.68	413.25 -	413.32	414.27	414.62	413.95	413.50	412.68	412.30	19
	20	413.17	414.03	413.92	413.66	413.25 -	413.31	414.36	414.60	413.93	413.49	412.66	412.29	20
+ Maximum	21	413.17	414.03	413.92	413.64	413.26	413.30	414.43	414.58	413.90	413.46	412.64	412.29	21
	22	413.18	414.03	413.92	413.62	413.26	413.29	414.49	414.57	413.89	413.44	412.61	412.28	22
	23	413.18	414.03	413.91	413.60	413.27	413.28 -	414.53	414.55	413.87	413.41	412.59	412.28	23
	24	413.19	414.04 +	413.91	413.58	413.29	413.28 -	414.55	414.54	413.85	413.40	412.57	412.27 -	24
	25	413.20	414.04 +	413.91	413.56	413.29	413.28 -	414.57	414.53	413.84	413.38	412.55	412.27 -	25
	26	413.21	414.03	413.91	413.54	413.31	413.28 -	414.58	414.51	413.82	413.35	412.53	412.27 -	26
	27	413.23	414.02	413.90 -	413.52	413.31	413.29	414.60	414.49	413.81	413.33	412.50	412.28	27
	28	413.25	414.02	413.90 -	413.50	413.32	413.29	414.61	414.47	413.80	413.31	412.48	412.30	28
	29	413.27	414.02	413.90 -	413.47	413.32	413.30	414.62 +	414.45	413.78	413.29	412.46	412.31	29
	30	413.29	414.02	413.90 -	413.45	413.32	413.31	414.62 +	414.43	413.77 -	413.26	412.45	412.33	30
31	413.33 +	414.02	413.91	413.42	413.32	413.32	414.62 +	414.41 -	413.76 -	413.24 -	412.44	412.35	31	
Monatsmittel	413.15	413.85	413.94	413.72	413.32	413.31	413.97	414.63 +	414.05	413.53	412.80	412.33 -	m ü.M.	
Spitze Datum	413.35 31.	414.04 21.	414.01 1.	413.91 1.	413.44 1.	413.35 13.	414.63 30.	414.78 + 7.	414.40 1.	413.77 1.	413.22 1.	412.44 - 1.	m ü.M.	
Amplitude	0.32	0.69	0.12	0.47	0.19	0.08 -	1.31 +	0.39	0.63	0.54	0.78	0.18	m	

Jahr Mittel: 413.55 Spitze: 414.78 (07.08.2021) Minimum: 412.26 (25.12.2021) Amplitude: 2.52



Periode	2002 - 2021 ( 19 Jahre )												
Monatsmittel	413.25	413.19	413.11	413.10 -	413.16	413.27	413.24	413.39 +	413.37	413.25	413.14	413.11	m ü.M.
Monats-Spitze Jahr	414.42 2003	414.04 2021	414.01 2021	413.91 - 2021	414.08 2006	414.23 2016	414.63 2021	414.78 + 2021	414.40 2021	414.34 2002	414.73 2002	414.71 2002	m ü.M.
Monats-Minimum Jahr	411.94 - 2017	411.94 - 2017	412.28 2017	412.22 2014	412.23 2014	412.12 2014	412.10 2014	412.35 + 2018	412.23 2018	412.12 2018	412.14 2018	412.14 2016	m ü.M.
Monats-Amplitude Jahr	0.52 - 2003	0.69 2021	0.63 2017	1.10 2006	0.85 2015	0.90 2012	1.31 2021	1.34 + 2005	0.87 2016	0.56 2012	0.78 2021	0.67 2019	m ü.M.
Periode	Mittel: 413.21 Spitze: 414.78 (07.08.2021) Minimum: 411.94 (29.01.2017) Amplitude: 2.84												



**Grundwasserstände**

**Nr. 5013 Trubikon - Oberwil Zug**

**KANTON ZUG**

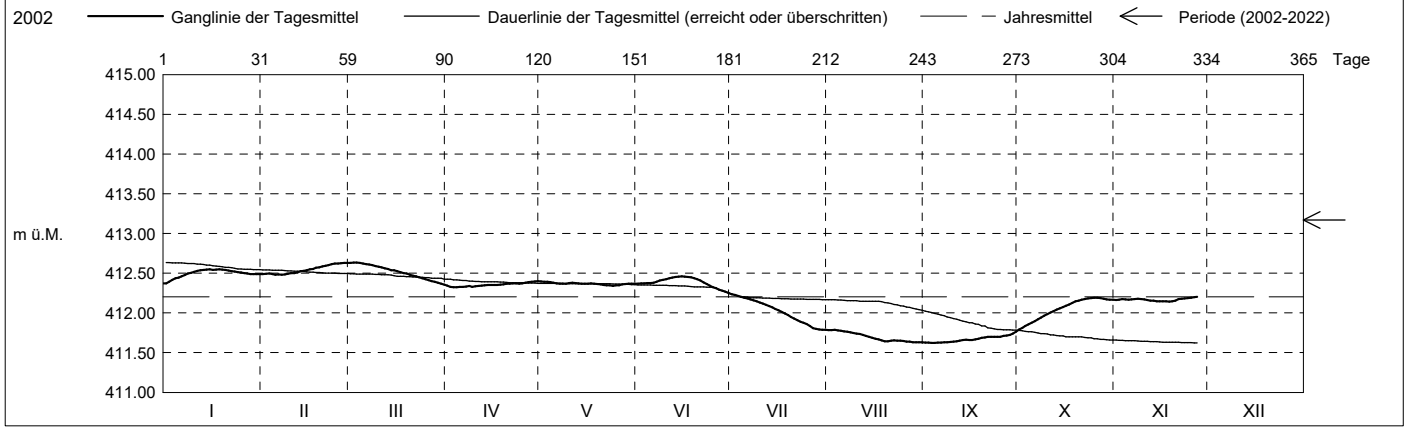
Koordinaten: 2'681'087' / 1'221'704'

Amt für Umwelt

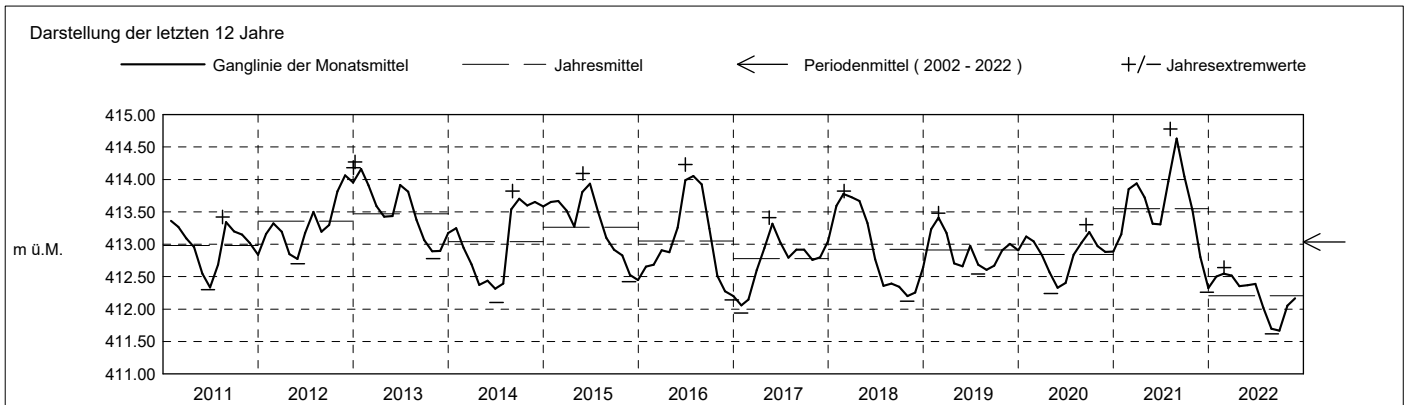
Abstichpunkt: 431.24 m ü.M. OK Terrain: 430.46 m ü.M.

2022	Januar	Februar	März	April	Mai	Juni	Juli	August	September	Oktober	November	Dezember	
Tagesmittel	1 412.37 -	412.49	412.63	412.34	412.40 +	412.37	412.23 +	411.79 +	411.63	411.79 -	412.16		1
	2 412.39	412.49	412.64 +	412.33	412.39	412.37	412.23 +	411.78	411.63	411.81	412.17		2
	3 412.42	412.50	412.64 +	412.32 -	412.39	412.37	412.22	411.79 +	411.62 -	411.84	412.17		3
	4 412.44	412.49	412.63	412.32 -	412.39	412.38	412.20	411.78	411.62 -	411.85	412.17		4
	5 412.45	412.48 -	412.62	412.33	412.38	412.38	412.19	411.78	411.63	411.88	412.17		5
	6 412.46	412.48 -	412.61	412.33	412.37	412.38	412.18	411.77	411.63	411.90	412.17		6
	7 412.48	412.48 -	412.61	412.33	412.37	412.39	412.17	411.76	411.63	411.92	412.17		7
	8 412.50	412.49	412.60	412.34	412.37	412.41	412.16	411.75	411.63	411.94	412.18		8
	9 412.51	412.49	412.59	412.33	412.37	412.42	412.15	411.75	411.63	411.97	412.18		9
	10 412.52	412.50	412.58	412.33	412.38	412.43	412.13	411.74	411.64	411.99	412.17		10
m ü.M.	11 412.53	412.50	412.58	412.34	412.38	412.44	412.12	411.73	411.64	412.00	412.16		11
	12 412.54	412.51	412.56	412.34	412.38	412.45	412.10	411.72	411.65	412.02	412.16		12
	13 412.54	412.52	412.55	412.35	412.37	412.45	412.09	411.71	411.66	412.04	412.15		13
	14 412.54	412.53	412.54	412.35	412.37	412.46 +	412.07	411.70	411.66	412.06	412.15		14
	15 412.55 +	412.54	412.54	412.35	412.37	412.46 +	412.05	411.69	411.66	412.08	412.15		15
	16 412.54	412.55	412.52	412.35	412.37	412.46 +	412.03	411.67	411.66	412.09	412.15		16
	17 412.55 +	412.55	412.51	412.35	412.37	412.45	412.01	411.67	411.67	412.11	412.15		17
	18 412.55 +	412.57	412.50	412.36	412.37	412.45	411.99	411.65	411.68	412.13	412.14 -		18
	19 412.55 +	412.57	412.50	412.36	412.36	412.44	411.97	411.64	411.69	412.15	412.15		19
	20 412.54	412.59	412.48	412.37	412.36	412.43	411.95	411.64	411.69	412.16	412.16		20
+ Maximum	21 412.53	412.60	412.47	412.37	412.35	412.41	411.93	411.65	411.70	412.17	412.17		21
	22 412.53	412.60	412.46	412.37	412.35	412.39	411.91	411.65	411.70	412.17	412.18		22
	23 412.52	412.61	412.45	412.37	412.35	412.36	411.89	411.65	411.70	412.18	412.18		23
	24 412.51	412.62	412.44	412.37	412.34 -	412.34	411.88	411.65	411.70	412.19 +	412.19		24
	25 412.51	412.62	412.43	412.37	412.35	412.32	411.86	411.65	411.70	412.19 +	412.19		25
	26 412.50	412.63 +	412.41	412.38	412.35	412.31	411.84	411.64	411.71	412.19 +	412.20 +		26
	27 412.50	412.63 +	412.40	412.39	412.36	412.29	411.81	411.64	411.72	412.19 +	412.20 +		27
	28 412.49	412.63 +	412.39	412.39	412.36	412.28	411.80	411.63 -	411.72	412.18			28
	29 412.49		412.38	412.40 +	412.37	412.27	411.79 -	411.63 -	411.74	412.17			29
	30 412.49		412.37	412.40 +	412.37	412.25 -	411.79 -	411.63 -	411.76 +	412.17			30
31 412.49		412.36 -		412.37		411.79 -	411.63 -		412.17			31	
Monatsmittel	412.50	412.54 +	412.52	412.35	412.37	412.39	412.02	411.70	411.67 -	412.05	412.17		m ü.M.
Spitze Datum	412.55 14.	412.63 24.	412.64 + 2.	412.40 29.	412.40 1.	412.46 14.	412.24 1.	411.79 1.	411.78 - 30.	412.20 25.	412.20 27.		m ü.M.
Amplitude	0.19	0.16	0.29	0.08	0.06 -	0.22	0.46 +	0.16	0.16	0.42	0.07		m

Jahr Mittel: 412.20 Spitze: 412.64 (02.03.2022) Minimum: 411.62 (01.09.2022) Amplitude: 1.02



Periode	2002 - 2022 (20 Jahre)												
Monatsmittel	413.21	413.16	413.08	413.06 -	413.11	413.23	413.18	413.31 +	413.29	413.19	413.09	413.11	m ü.M.
Monats-Spitze Jahr	414.42 2003	414.04 2021	414.01 2021	413.91 - 2021	414.08 2006	414.23 2016	414.63 2021	414.78 + 2021	414.40 2021	414.34 2002	414.73 2002	414.71 2002	m ü.M.
Monats-Minimum Jahr	411.94 2017	411.94 2017	412.28 + 2017	412.22 2014	412.23 2014	412.12 2014	411.78 2022	411.63 2022	411.62 - 2022	411.78 2022	412.14 2022	412.14 2016	m ü.M.
Monats-Amplitude Jahr	0.52 - 2003	0.69 2021	0.63 2017	1.10 2006	0.85 2015	0.90 2012	1.31 2021	1.34 + 2005	0.87 2016	0.56 2012	0.78 2021	0.67 2019	m ü.M.
Periode	Mittel: 413.17			Spitze: 414.78 (07.08.2021)			Minimum: 411.62 (01.09.2022)			Amplitude: 3.16			



**Grundwasserstände**

**Nr. 5013 Trubikon - Oberwil Zug**

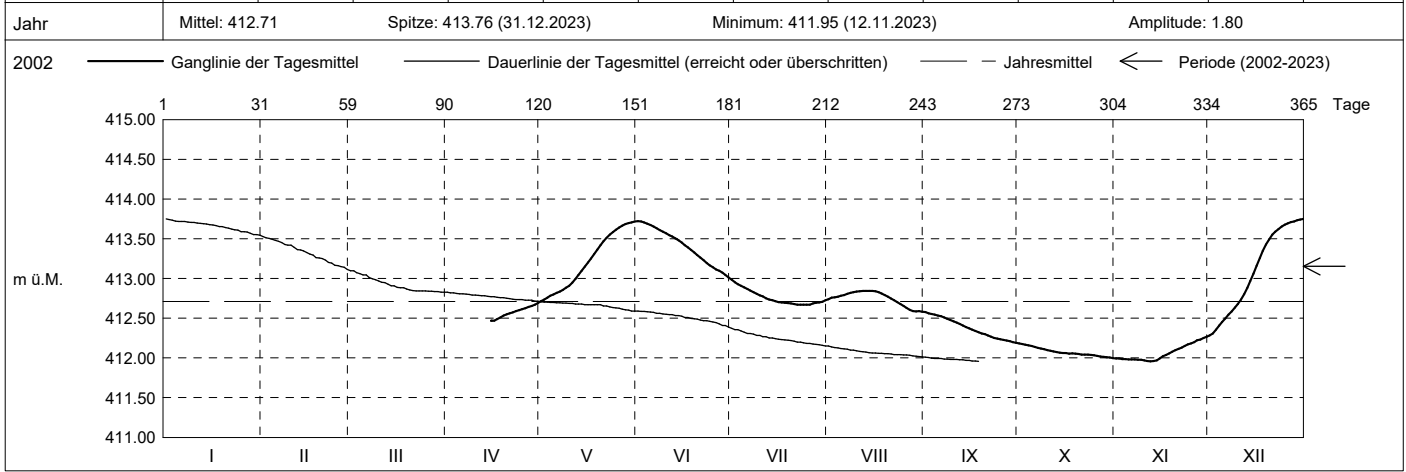
**KANTON ZUG**

Koordinaten: 2'681'087' / 1'221'704'

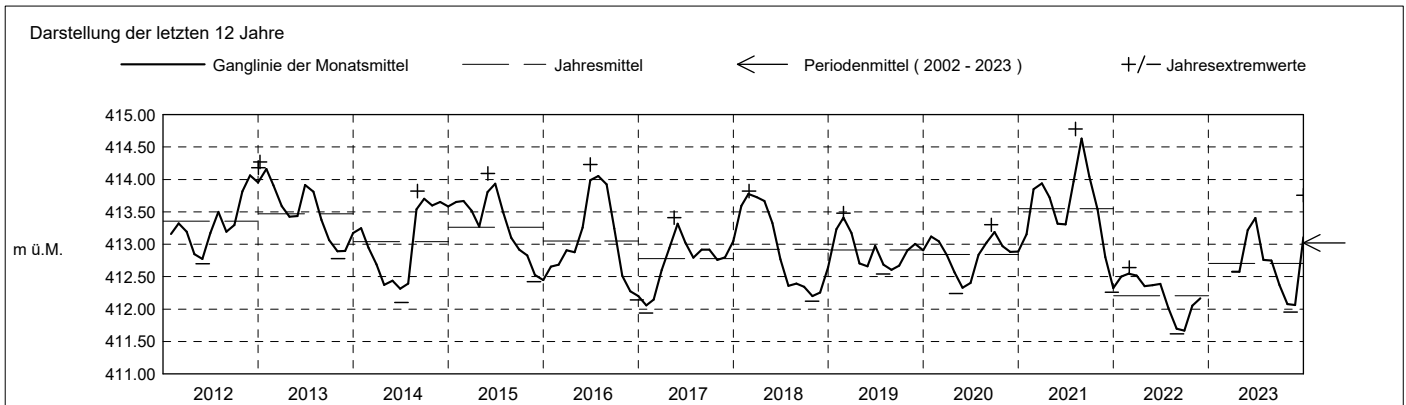
Amt für Umwelt

Abstichpunkt: 431.24 m ü.M. OK Terrain: 430.46 m ü.M.

2023		Januar	Februar	März	April	Mai	Juni	Juli	August	September	Oktober	November	Dezember	
Tagesmittel	1					412.71 -	413.72 +	412.98 +	412.74	412.58 +	412.18 +	411.99	412.28 -	1
	2					412.74	413.72 +	412.95	412.76	412.56	412.18 +	411.99	412.31	2
	3					412.76	413.71	412.93	412.76	412.55	412.17	411.98	412.35	3
	4					412.78	413.69	412.91	412.77	412.55	412.16	411.99	412.41	4
	5					412.80	413.67	412.89	412.78	412.53	412.15	411.98	412.45	5
	6					412.82	413.65	412.87	412.79	412.52	412.14	411.98	412.50	6
	7					412.84	413.63	412.85	412.80	412.51	412.13	411.98	412.54	7
	8					412.86	413.61	412.83	412.82	412.50	412.12	411.98	412.59	8
	9					412.88	413.59	412.81	412.83	412.48	412.11	411.98	412.63	9
	10					412.91	413.57	412.79	412.84	412.46	412.10	411.97	412.68	10
m ü.M.	11					412.95	413.54	412.77	412.84	412.45	412.09	411.96 -	412.73	11
	12					412.99	413.53	412.75	412.84	412.43	412.08	411.96 -	412.80	12
	13					413.04	413.50	412.74	412.84	412.41	412.07	411.96 -	412.88	13
	14					413.10	413.48	412.73	412.85 +	412.39	412.07	411.97	412.97	14
	15				412.47 -	413.15	413.45	412.72	412.84	412.37	412.06	411.99	413.06	15
	16				412.47 -	413.20	413.42	412.70	412.84	412.36	412.06	412.02	413.16	16
	17				412.49	413.25	413.39	412.70	412.83	412.34	412.05	412.04	413.26	17
	18				412.51	413.31	413.36	412.70	412.81	412.33	412.06	412.06	413.35	18
	19				412.53	413.36	413.32	412.69	412.79	412.31	412.05	412.08	413.43	19
	20				412.55	413.42	413.29	412.68	412.77	412.30	412.05	412.10	413.49	20
+ Maximum	21				412.56	413.47	413.26	412.68	412.75	412.28	412.04	412.11	413.55	21
	22				412.58	413.51	413.23	412.67 -	412.73	412.27	412.04	412.13	413.59	22
	23				412.59	413.55	413.19	412.67 -	412.70	412.25	412.04	412.15	413.62	23
	24				412.60	413.59	413.17	412.67 -	412.68	412.24	412.04	412.17	413.65	24
	25				412.61	413.61	413.14	412.67 -	412.65	412.23	412.03	412.18	413.68	25
	26				412.63	413.64	413.11	412.67 -	412.63	412.23	412.03	412.20	413.69	26
	27				412.64	413.66	413.10	412.68	412.61	412.22	412.02	412.22	413.71	27
	28				412.65	413.68	413.07	412.69	412.59	412.21	412.01	412.23	413.72	28
	29				412.67	413.70	413.04	412.70	412.59	412.20	412.01	412.25	413.73	29
	30				412.69 +	413.71	413.01 -	412.71	412.59	412.19 -	412.00 -	412.27 +	413.74	30
31				413.72 +			412.73	412.58 -		412.00 -		413.75 +	31	
Monatsmittel				412.58	413.22	413.41 +	412.76	412.75	412.37	412.08	412.06 -	413.11	m ü.M.	
Spitze Datum				412.70 30.	413.72 30.	413.72 1.	413.00 1.	412.85 13.	412.58 1.	412.19 - 1.	412.28 30.	413.76 + 31.	m ü.M.	
Amplitude				0.24	1.02	0.72	0.34	0.27	0.40	0.20 -	0.32	1.48 +	m	
Jahr	Mittel: 412.71      Spitze: 413.76 (31.12.2023)      Minimum: 411.95 (12.11.2023)      Amplitude: 1.80													



Periode	2002 - 2023 ( 21 Jahre )												
Monatsmittel	413.21	413.16	413.08	413.04 -	413.12	413.24	413.16	413.28 +	413.24	413.14	413.05	413.11	m ü.M.
Monats-Spitze Jahr	414.42 2003	414.04 2021	414.01 2021	413.91 - 2021	414.08 2006	414.23 2016	414.63 2021	414.78 + 2021	414.40 2021	414.34 2002	414.73 2002	414.71 2002	m ü.M.
Monats-Minimum Jahr	411.94 2017	411.94 2017	412.28 + 2017	412.22 2014	412.23 2014	412.12 2014	411.78 2022	411.63 2022	411.62 - 2022	411.78 2022	411.95 2023	412.14 2016	m ü.M.
Monats-Amplitude Jahr	0.52 - 2003	0.69 2021	0.63 2017	1.10 2006	1.02 2023	0.90 2012	1.31 2021	1.34 2005	0.87 2016	0.56 2012	0.78 2021	1.49 + 2023	m ü.M.
Periode	Mittel: 413.15      Spitze: 414.78 (07.08.2021)      Minimum: 411.62 (01.09.2022)      Amplitude: 3.16												



**Grundwasserstände**

**Nr. 5013 Trubikon - Oberwil Zug**

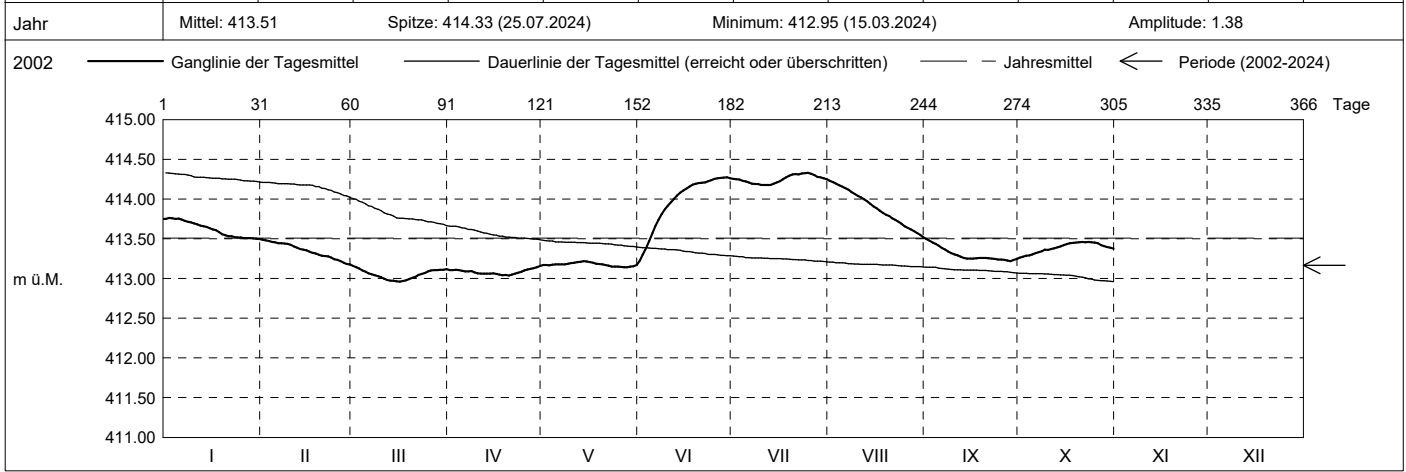
**KANTON ZUG**

Koordinaten: 2'681'087' / 1'221'704'

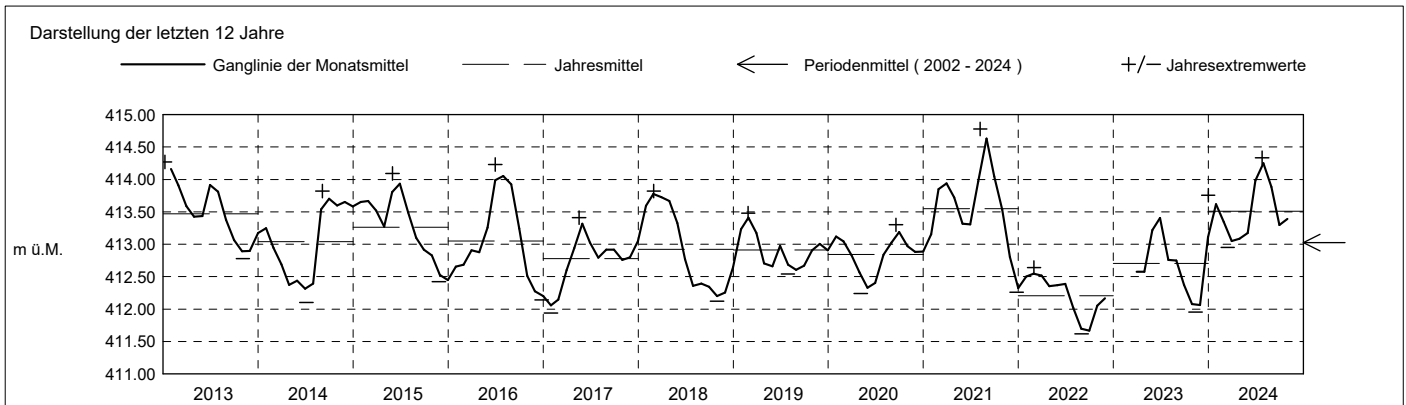
Amt für Umwelt

Abstichpunkt: 431.24 m ü.M. OK Terrain: 430.46 m ü.M.

2024	Januar	Februar	März	April	Mai	Juni	Juli	August	September	Oktober	November	Dezember	
Tagesmittel	1	413.75	413.49 +	413.16 +	413.11	413.17	413.23 -	414.25	414.23 +	413.50 +			1
	2	413.76 +	413.48	413.14	413.11	413.17	413.30	414.25	414.21	413.47			2
	3	413.76 +	413.47	413.13	413.11	413.17	413.38	414.24	414.19	413.45			3
	4	413.75	413.46	413.10	413.10	413.17	413.47	414.23	414.17	413.43			4
	5	413.75	413.45	413.08	413.10	413.18	413.57	414.22	414.16	413.41			5
	6	413.74	413.45	413.07	413.09	413.18	413.66	414.21	414.14	413.38			6
	7	413.73	413.44	413.05	413.09	413.18	413.74	414.19	414.11	413.36			7
	8	413.71	413.44	413.04	413.09	413.18	413.81	414.19	414.09	413.34			8
	9	413.71	413.43	413.03	413.08	413.19	413.87	414.19	414.06	413.32			9
	10	413.70	413.42	413.01	413.07	413.19	413.92	414.18	414.04	413.30			10
m ü.M.	11	413.68	413.40	412.99	413.06	413.20	413.96	414.17 -	414.02	413.29			11
	12	413.67	413.39	412.98	413.06	413.20	414.01	414.17 -	413.99	413.27			12
	13	413.66	413.37	412.97	413.06	413.21	414.04	414.18	413.97	413.26			13
	14	413.65	413.36	412.97	413.06	413.22 +	414.08	414.19	413.94	413.25			14
	15	413.63	413.36	412.96 -	413.06	413.22 +	414.11	414.21	413.91	413.25			15
	16	413.62	413.34	412.96 -	413.06	413.21	414.13	414.23	413.88	413.25			16
	17	413.61	413.32	412.97	413.05	413.20	414.15	414.25	413.85	413.26			17
	18	413.58	413.31	412.98	413.04 -	413.19	414.18	414.27	413.83	413.26			18
	19	413.56	413.30	412.99	413.04 -	413.18	414.19	414.29	413.80	413.26			19
	20	413.54	413.29	413.01	413.04 -	413.18	414.20	414.31	413.78	413.26			20
+ Maximum	21	413.53	413.28	413.02	413.05	413.17	414.21	414.31	413.76	413.26			21
	22	413.53	413.28	413.04	413.06	413.16	414.21	414.31	413.74	413.25			22
	23	413.52	413.26	413.06	413.07	413.15	414.22	414.32	413.71	413.25			23
	24	413.52	413.24	413.07	413.09	413.15	414.24	414.32	413.69	413.24			24
	25	413.51	413.23	413.09	413.10	413.15	414.25	414.33 +	413.66	413.24			25
	26	413.51	413.22	413.10	413.11	413.14 -	414.26	414.32	413.64	413.23			26
	27	413.51	413.20	413.10	413.12	413.14 -	414.27 +	414.30	413.62	413.23			27
	28	413.51	413.18 -	413.10	413.13	413.14 -	414.27 +	414.28	413.59	413.22 -			28
	29	413.50 -	413.18 -	413.11	413.14	413.15	414.27 +	414.27	413.57	413.23			29
	30	413.50 -		413.11	413.16 +	413.15	414.26	414.26	413.55	413.25			30
31	413.50 -		413.12		413.17		414.25	413.52 -				31	
Monatsmittel	413.62	413.35	413.05 -	413.08	413.18	413.98	414.25 +	413.88	413.30	413.39			m ü.M.
Spitze Datum	413.77 2.	413.49 1.	413.16 - 1.	413.16 - 30.	413.22 14.	414.29 29.	414.33 + 25.	414.24 1.	413.51 1.	413.46 21.			m ü.M.
Amplitude	0.27	0.33	0.21	0.13	0.09 -	1.09 +	0.17	0.73	0.30	0.21			m
Jahr	Mittel: 413.51      Spitze: 414.33 (25.07.2024)      Minimum: 412.95 (15.03.2024)      Amplitude: 1.38												



Periode	2002 - 2024 ( 22 Jahre )												
Monatsmittel	413.23	413.16	413.08	413.04 -	413.12	413.27	413.21	413.31 +	413.25	413.15	413.05	413.11	m ü.M.
Monats-Spitze Jahr	414.42 2003	414.04 2021	414.01 2021	413.91 - 2021	414.08 2006	414.29 2024	414.63 2021	414.78 + 2021	414.40 2021	414.34 2002	414.73 2002	414.71 2002	m ü.M.
Monats-Minimum Jahr	411.94 2017	411.94 2017	412.28 + 2017	412.22 2014	412.23 2014	412.12 2014	411.78 2022	411.63 2022	411.62 - 2022	411.78 2022	411.95 2023	412.14 2016	m ü.M.
Monats-Amplitude Jahr	0.52 - 2003	0.69 2021	0.63 2017	1.10 2006	1.02 2023	1.10 2024	1.31 2021	1.34 2005	0.87 2016	0.56 2012	0.78 2021	1.49 + 2023	m ü.M.
Periode	Mittel: 413.17      Spitze: 414.78 (07.08.2021)      Minimum: 411.62 (01.09.2022)      Amplitude: 3.16												



**Grundwasserstände**

**Nr. 5013 Trubikon - Oberwil Zug**

**KANTON ZUG**

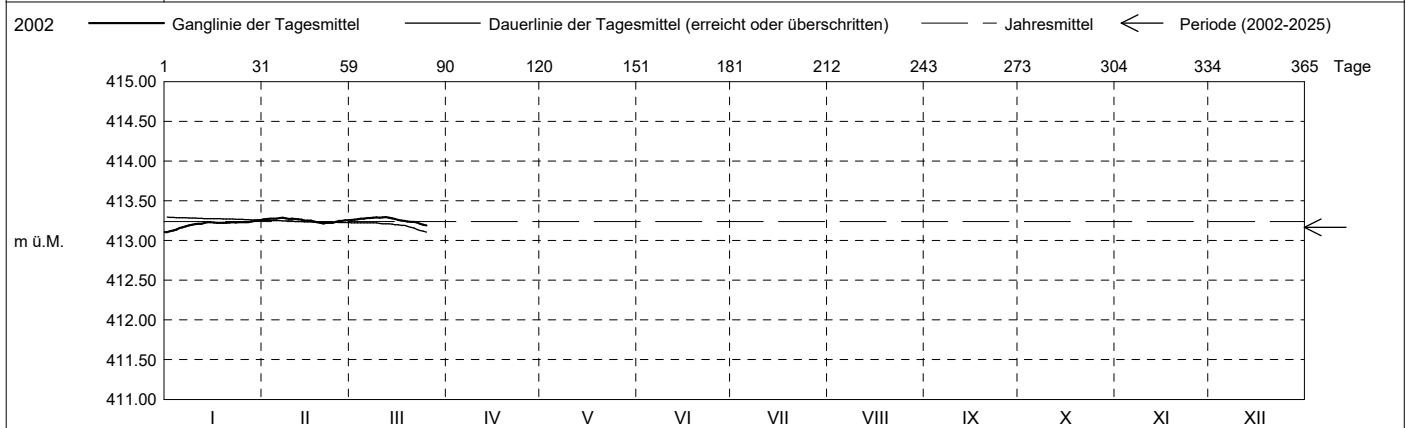
Koordinaten: 2'681'087' / 1'221'704'

Amt für Umwelt

Abstichpunkt: 431.24 m ü.M. OK Terrain: 430.46 m ü.M.

2025		Januar	Februar	März	April	Mai	Juni	Juli	August	September	Oktober	November	Dezember	
Tagesmittel	1	413.11 -	413.27	413.26										1
	2	413.12	413.27	413.26										2
	3	413.12	413.27	413.27										3
	4	413.14	413.28 +	413.27										4
	5	413.16	413.27	413.28										5
	6	413.17	413.28 +	413.28										6
	7	413.18	413.28 +	413.28										7
	8	413.19	413.28 +	413.29 +										8
	9	413.20	413.27	413.29 +										9
	10	413.21	413.27	413.29 +										10
m ü.M.	11	413.21	413.27	413.29 +										11
	12	413.21	413.27	413.29 +										12
	13	413.22	413.26	413.29 +										13
	14	413.23	413.25	413.28										14
	15	413.23	413.25	413.27										15
	16	413.23	413.25	413.26										16
	17	413.22	413.24	413.25										17
	18	413.22	413.23	413.24										18
	19	413.22	413.22 -	413.24										19
	20	413.22	413.22 -	413.23										20
+ Maximum	21	413.22	413.22 -	413.23										21
	22	413.23	413.22 -	413.23										22
	23	413.23	413.22 -	413.21										23
	24	413.23	413.23	413.20										24
	25	413.23	413.25	413.19 -										25
	26	413.23	413.25											26
	27	413.23	413.25											27
	28	413.24	413.26											28
	29	413.25												29
	30	413.25												30
31	413.26 +												31	
Monatsmittel	413.21 -	413.25	413.26 +											m ü.M.
Spitze Datum	413.26 - 31.	413.29 7.	413.30 + 9.											m ü.M.
Amplitude	0.17 +	0.08 -	0.11											m

Jahr Mittel: 413.24 Spitze: 413.30 (09.03.2025) Minimum: 413.10 (01.01.2025) Amplitude: 0.20



Periode	2002 - 2025 ( 23 Jahre )												
Monatsmittel	413.23	413.17	413.09	413.04 -	413.12	413.27	413.21	413.31 +	413.25	413.15	413.05	413.10	m ü.M.
Monats-Spitze Jahr	414.42 2003	414.04 2021	414.01 2021	413.91 - 2021	414.08 2006	414.29 2024	414.63 2021	414.78 + 2021	414.40 2021	414.34 2002	414.73 2002	414.71 2002	m ü.M.
Monats-Minimum Jahr	411.94 2017	411.94 2017	412.28 + 2017	412.22 2014	412.23 2014	412.12 2014	411.78 2022	411.63 2022	411.62 - 2022	411.78 2022	411.95 2023	412.14 2016	m ü.M.
Monats-Amplitude Jahr	0.52 - 2003	0.69 2021	0.63 2017	1.10 2006	1.02 2023	1.10 2024	1.31 2021	1.34 2005	0.87 2016	0.56 2012	0.78 2021	1.49 + 2023	m ü.M.
Periode	Mittel: 413.17			Spitze: 414.78 (07.08.2021)			Minimum: 411.62 (01.09.2022)			Amplitude: 3.16			

